



SZABO SCANDIC

Part of Europa Biosite

Produktinformation



Forschungsprodukte & Biochemikalien



Zellkultur & Verbrauchsmaterial



Diagnostik & molekulare Diagnostik



Laborgeräte & Service

Weitere Information auf den folgenden Seiten!
See the following pages for more information!



Lieferung & Zahlungsart

siehe unsere [Liefer- und Versandbedingungen](#)

Zuschläge

- Mindermengenzuschlag
- Trockeneiszuschlag
- Gefahrgutzuschlag
- Expressversand

SZABO-SCANDIC HandelsgmbH

Quellenstraße 110, A-1100 Wien

T. +43(0)1 489 3961-0

F. +43(0)1 489 3961-7

mail@szabo-scandic.com

www.szabo-scandic.com

[linkedin.com/company/szaboscandic](https://www.linkedin.com/company/szaboscandic) 

AF-6 (m): 293 Lysate: sc-178260

BACKGROUND

The dynamics of a cell-cell interface such as tight junctions or adherens junctions are important in many developmental, physiological, and pathological processes. AF-6 (MLLT4: myeloid/lymphoid or mixed-lineage leukemia *trans*-located to 4) is a 1,612 amino acid protein that contains 2 N-terminal Ras binding domains (RBD) and a GLGF motif, and is implicated in Ras-mediated signaling events occurring at peripheral cell-cell junctions. AF-6 interacts with F-actin and Profilin in cell-cell junctions, and may modulate actin modeling near adhesion complexes. Furthermore, AF-6 coordinates junction adhesion molecule (JAM) recruitment to intercellular junctions through a PDZ domain. Developing mice deficient in AF-6 activity display a loss of neuroepithelial polarity, suggesting that AF-6 activity is an important regulator of cell-cell junctions that influence apical/basolateral asymmetry.

REFERENCES

1. Prasad, R., Gu, Y., Alder, H., Nakamura, T., Canaani, O., Saito, H., Huebner, K., Gale, R.P., Nowell, P.C., Kuriyama, K., et al. 1993. Cloning of the ALL-1 fusion partner, the AF-6 gene, involved in acute myeloid leukemias with the t(6;11) chromosome translocation. *Cancer Res.* 53: 5624-5628.
2. Kuriyama, M., Harada, N., Kuroda, S., Yamamoto, T., Nakafuku, M., Iwamatsu, A., Yamamoto, D., Prasad, R., Croce, C., Canaani, E. and Kaibuchi, K. 1996. Identification of AF-6 and canoe as putative targets for Ras. *J. Biol. Chem.* 271: 607-610.
3. Yamamoto, T., Harada, N., Kano, K., Taya, S., Canaani, E., Matsuura, Y., Mizoguchi, A., Ide, C. and Kaibuchi, K. 1997. The Ras target AF-6 interacts with ZO-1 and serves as a peripheral component of tight junctions in epithelial cells. *J. Cell Biol.* 139: 785-795.
4. Zhadanov, A.B., Provance, D.W.J., Speer, C.A., Coffin, J.D., Goss, D., Blixt, J.A., Reichert, C.M. and Mercer, J.A. 1999. Absence of the tight junctional protein AF-6 disrupts epithelial cell-cell junctions and cell polarity during mouse development. *Curr. Biol.* 9: 880-888.
5. Boettner, B., Govek, E.E., Cross, J. and Van Aelst, L. 2000. The junctional multidomain protein AF-6 is a binding partner of the Rap1A GTPase and associates with the actin cytoskeletal regulator profilin. *Proc. Natl. Acad. Sci. USA* 97: 9064-9069.
6. Ebnet, K., Schulz, C.U., Meyer Zu Brickwedde, M.K., Pendl, G.G. and Vestweber, D. 2000. Junctional adhesion molecule interacts with the PDZ domain-containing proteins AF-6 and ZO-1. *J. Biol. Chem.* 275: 27979-27988.

CHROMOSOMAL LOCATION

Genetic locus: Mllt4 (mouse) mapping to 17 A1.

PRODUCT

AF-6 (m): 293 Lysate represents a lysate of mouse AF-6 transfected 293 cells and is provided as 100 µg protein in 200 µl SDS-PAGE buffer.

STORAGE

Store at -20° C. Repeated freezing and thawing should be minimized. Sample vial should be boiled once prior to use. Non-hazardous. No MSDS required.

APPLICATIONS

AF-6 (m): 293 Lysate is suitable as a Western Blotting positive control for mouse reactive AF-6 antibodies. Recommended use: 10-20 µl per lane.

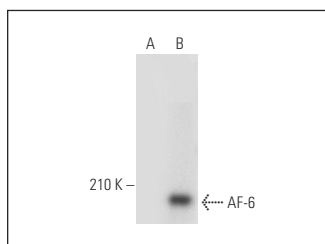
Control 293 Lysate: sc-110760 is available as a Western Blotting negative control lysate derived from non-transfected 293 cells.

AF-6 (G-7): sc-398370 is recommended as a positive control antibody for Western Blot analysis of enhanced mouse AF-6 expression in AF-6 transfected 293 cells (starting dilution 1:100, dilution range 1:100-1:1,000).

RECOMMENDED SUPPORT REAGENTS

To ensure optimal results, the following support reagents are recommended: 1) Western Blotting: use m-IgGκ BP-HRP: sc-516102 or m-IgGκ BP-HRP (Cruz Marker): sc-516102-CM (dilution range: 1:1000-1:10000), Cruz Marker™ Molecular Weight Standards: sc-2035, UltraCruz® Blocking Reagent: sc-516214 and Western Blotting Luminol Reagent: sc-2048.

DATA



AF-6 (G-7): sc-398370. Western blot analysis of AF-6 expression in non-transfected: sc-110760 (A) and mouse AF-6 transfected: sc-178260 (B) 293 whole cell lysates.

RESEARCH USE

For research use only, not for use in diagnostic procedures.

PROTOCOLS

See our web site at www.scbt.com for detailed protocols and support products.