



SZABO SCANDIC

Part of Europa Biosite

Produktinformation



Forschungsprodukte & Biochemikalien



Zellkultur & Verbrauchsmaterial



Diagnostik & molekulare Diagnostik



Laborgeräte & Service

Weitere Information auf den folgenden Seiten!
See the following pages for more information!



Lieferung & Zahlungsart

siehe unsere [Liefer- und Versandbedingungen](#)

Zuschläge

- Mindermengenzuschlag
- Trockeneiszuschlag
- Gefahrgutzuschlag
- Expressversand

SZABO-SCANDIC HandelsgmbH

Quellenstraße 110, A-1100 Wien

T. +43(0)1 489 3961-0

F. +43(0)1 489 3961-7

mail@szabo-scandic.com

www.szabo-scandic.com

[linkedin.com/company/szaboscandic](https://www.linkedin.com/company/szaboscandic) 

GDF-11 (m): 293 Lysate: sc-178664

BACKGROUND

GDF-11, a member of the transforming growth factor β (TGF β) superfamily, controls anterior/posterior patterning of the axial skeleton, regulates organogenesis by controlling expression of GDNF, contributes to the control of Hox gene expression and induces phosphorylation of Smad2. In addition, GDF-11 mediates signaling of Nodal during left-right patterning and development of head structures and inhibits generation of new neurons by neuronal progenitors in the olfactory epithelium.

REFERENCES

- Gad, J.M. and Tam, P.P. 1999. Axis development: the mouse becomes a daschund. *Curr. Biol.* 9: R783-R786.
- McPherron, A.C., Lawler, A.M. and Lee, S.J. 1999. Regulation of anterior/posterior patterning of the axial skeleton by growth/differentiation factor 11. *Nat. Genet.* 22: 260-264.
- Liu, J.P., Laufer, E. and Jessell, T.M. 2001. Assigning the positional identity of spinal motor neurons: rostrocaudal patterning of Hoxc expression by FGFs, GDF-11 and retinoids. *Neuron* 32: 997-1012.
- Gamer, L.W., Cox, K.A., Small, C. and Rosen, V. 2001. GDF-11 is a negative regulator of chondrogenesis and myogenesis in the developing chick limb. *Dev. Biol.* 229: 407-420.
- Oh, S.P., Yeo, C.Y., Lee, Y., Schrewe, H., Whitman, M. and Li, E. 2002. Activin type IIA and IIB receptors mediate GDF-11 signaling in axial vertebral patterning. *Genes Dev.* 16: 2749-2754.
- Esquela, A.F. and Lee, S.J. 2003. Regulation of metanephric kidney development by growth/differentiation factor 11. *Dev. Biol.* 257: 356-370.
- Wu, H.H., Ivkovic, S., Murray, R.C., Jaramillo, S., Lyons, K.M., Johnson, J.E. and Calof, A.L. 2003. Autoregulation of neurogenesis by GDF-11. *Neuron* 37: 197-207.

CHROMOSOMAL LOCATION

Genetic locus: Gdf11 (mouse) mapping to 10 D3.

PRODUCT

GDF-11 (m): 293 Lysate represents a lysate of mouse GDF-11 transfected 293 cells and is provided as 100 μ g protein in 200 μ l SDS-PAGE buffer.

RESEARCH USE

For research use only, not for use in diagnostic procedures.

APPLICATIONS

GDF-11 (m): 293 Lysate is suitable as a Western Blotting positive control for mouse reactive GDF-11 antibodies. Recommended use: 10-20 μ l per lane.

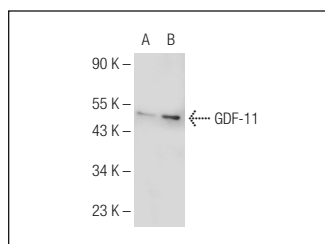
Control 293 Lysate: sc-110760 is available as a Western Blotting negative control lysate derived from non-transfected 293 cells.

GDF-11 (X-19): sc-81952 is recommended as a positive control antibody for Western Blot analysis of enhanced mouse GDF-11 expression in GDF-11 transfected 293 cells (starting dilution 1:100, dilution range 1:100-1:1,000).

RECOMMENDED SUPPORT REAGENTS

To ensure optimal results, the following support reagents are recommended:
1) Western Blotting: use m-IgG κ BP-HRP: sc-516102 or m-IgG κ BP-HRP (Cruz Marker): sc-516102-CM (dilution range: 1:1000-1:10000), Cruz Marker™ Molecular Weight Standards: sc-2035, UltraCruz® Blocking Reagent: sc-516214 and Western Blotting Luminol Reagent: sc-2048.

DATA



GDF-11 (X-19): sc-81952. Western blot analysis of GDF-11 expression in non-transfected: sc-110760 (A) and mouse GDF-11 transfected: sc-178664 (B) 293 whole cell lysates.

STORAGE

Store at -20° C. Repeated freezing and thawing should be minimized. Sample vial should be boiled once prior to use. Non-hazardous. No MSDS required.

PROTOCOLS

See our web site at www.scbt.com for detailed protocols and support products.