



SZABO SCANDIC

Part of Europa Biosite

Produktinformation



Forschungsprodukte & Biochemikalien



Zellkultur & Verbrauchsmaterial



Diagnostik & molekulare Diagnostik



Laborgeräte & Service

Weitere Information auf den folgenden Seiten!
See the following pages for more information!



Lieferung & Zahlungsart

siehe unsere [Liefer- und Versandbedingungen](#)

Zuschläge

- Mindermengenzuschlag
- Trockeneiszuschlag
- Gefahrgutzuschlag
- Expressversand

SZABO-SCANDIC HandelsgmbH

Quellenstraße 110, A-1100 Wien

T. +43(0)1 489 3961-0

F. +43(0)1 489 3961-7

mail@szabo-scandic.com

www.szabo-scandic.com

[linkedin.com/company/szaboscandic](https://www.linkedin.com/company/szaboscandic) 

NOD3 (m): 293T Lysate: sc-179012

BACKGROUND

The leucine-rich repeat (LRR) is a 20-30 amino acid motif that forms a hydrophobic α/β horseshoe fold, allowing it to accommodate several leucine residues within a tightly packed core. All LRRs contain a variable segment and a highly conserved segment, the latter of which accounts for 11 or 12 residues of the entire LRR motif. NOD3 (nucleotide-binding oligomerization domain protein 3), also known as NLRC3 (NLR family, CARD domain containing 3), is a 1,065 amino acid protein that localizes to the cytoplasm and contains one NACHT domain and 17 LRRs. Expressed in peripheral blood mononuclear cells, NOD3 is thought to modulate T-cell activation and may be involved in transcriptional control events related to T-cell activation. Multiple isoforms of NOD3 exist due to alternative splicing events.

REFERENCES

1. Kobe, B. and Deisenhofer, J. 1994. The leucine-rich repeat: a versatile binding motif. *Trends Biochem. Sci.* 19: 415-421.
2. Kobe, B. and Deisenhofer, J. 1995. Proteins with leucine-rich repeats. *Curr. Opin. Struct. Biol.* 5: 409-416.
3. Kobe, B. and Kajava, A.V. 2001. The leucine-rich repeat as a protein recognition motif. *Curr. Opin. Struct. Biol.* 11: 725-732.
4. Inohara, N. and Nuñez, G. 2003. NODs: intracellular proteins involved in inflammation and apoptosis. *Nat. Rev. Immunol.* 3: 371-382.
5. Matsushima, N., et al. 2005. Structural analysis of leucine-rich-repeat variants in proteins associated with human diseases. *Cell. Mol. Life Sci.* 62: 2771-2791.
6. Conti, B.J., et al. 2005. CATERPILLER 16.2 (CLR16.2), a novel NBD/LRR family member that negatively regulates T cell function. *J. Biol. Chem.* 280: 18375-18385.
7. Moore, C.B., et al. 2007. Downregulation of immune signaling genes in patients with large surface burn injury. *J Burn Care Res.* 28: 879-887.
8. Benko, S., et al. 2008. Constitutive and UV-B modulated transcription of Nod-like receptors and their functional partners in human corneal epithelial cells. *Mol. Vis.* 14: 1575-1583.

CHROMOSOMAL LOCATION

Genetic locus: *Nlrc3* (mouse) mapping to 16 A1.

PRODUCT

NOD3 (m): 293T Lysate represents a lysate of mouse NOD3 transfected 293T cells and is provided as 100 μ g protein in 200 μ l SDS-PAGE buffer.

STORAGE

Store at -20° C. Repeated freezing and thawing should be minimized. Sample vial should be boiled once prior to use. Non-hazardous. No MSDS required.

PROTOCOLS

See our web site at www.scbt.com for detailed protocols and support products.

APPLICATIONS

NOD3 (m): 293T Lysate is suitable as a Western Blotting positive control for mouse reactive NOD3 antibodies. Recommended use: 10-20 μ l per lane.

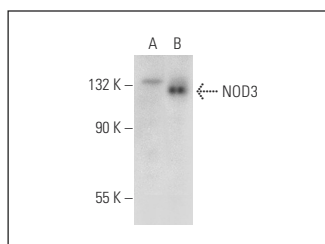
Control 293T Lysate: sc-117752 is available as a Western Blotting negative control lysate derived from non-transfected 293T cells.

NOD3 (E-4): sc-398947 is recommended as a positive control antibody for Western Blot analysis of enhanced mouse NOD3 expression in NOD3 transfected 293T cells (starting dilution 1:100, dilution range 1:100-1:1,000).

RECOMMENDED SUPPORT REAGENTS

To ensure optimal results, the following support reagents are recommended:
 1) Western Blotting: use m-IgG κ BP-HRP: sc-516102 or m-IgG κ BP-HRP (Cruz Marker): sc-516102-CM (dilution range: 1:1000-1:10000), Cruz Marker™ Molecular Weight Standards: sc-2035, UltraCruz® Blocking Reagent: sc-516214 and Western Blotting Luminol Reagent: sc-2048.

DATA



NOD3 (E-4): sc-398947. Western blot analysis of *Nlrc3* expression in non-transfected: sc-117752 (A) and mouse NOD3 transfected: sc-179012 (B) 293T whole cell lysates.

RESEARCH USE

For research use only, not for use in diagnostic procedures.