



SZABO SCANDIC

Part of Europa Biosite

Produktinformation



Forschungsprodukte & Biochemikalien



Zellkultur & Verbrauchsmaterial



Diagnostik & molekulare Diagnostik



Laborgeräte & Service

Weitere Information auf den folgenden Seiten!
See the following pages for more information!



Lieferung & Zahlungsart

siehe unsere [Liefer- und Versandbedingungen](#)

Zuschläge

- Mindermengenzuschlag
- Trockeneiszuschlag
- Gefahrgutzuschlag
- Expressversand

SZABO-SCANDIC HandelsgmbH

Quellenstraße 110, A-1100 Wien

T. +43(0)1 489 3961-0

F. +43(0)1 489 3961-7

mail@szabo-scandic.com

www.szabo-scandic.com

[linkedin.com/company/szaboscandic](https://www.linkedin.com/company/szaboscandic) 

SK-BR-3 Cell Lysate: sc-2218

BACKGROUND

Santa Cruz Biotechnology offers a variety of whole cell lysates for use in combination with our antibodies as Western Blotting controls. SK-BR-3 Whole Cell Lysate is derived from the SK-BR-3 cell line using a procedure that ensures protein integrity and lot-to-lot reproducibility. All lysates are tested by Western Blotting to assure that each one contains the expected concentration and assortment of proteins. Numerous antibodies directed against a wide array of mammalian proteins are used to test each lysate.

SK-BR-3 cell line was established from a 43 year old adult female Caucasian. The SK-BR-3 cell line overexpresses the HER2/c-Erb-2 gene product. Ultra-structural features include microvilli and desmosomes, glycogen granules, large lysosomes, bundles of cytoplasmic fibrils.

REFERENCES

1. Fogh, J. 1975. *Human Tumor Cells In Vitro*. New York: Plenum Press.
2. Trempe, G.L. 1976. Human breast cancer in culture. *Recent Results Cancer Res.* 57: 33-41.
3. Fogh, J., Wright, W.C. and Loveless, J.D. 1977. Absence of HeLa cell contamination in 169 cell lines derived from human tumors. *J. Natl. Cancer Inst.* 58: 209-214.
4. Fogh, J., Fogh, J.M. and Orfeo, T. 1977. One hundred and twenty-seven cultured human tumor cell lines producing tumors in nude mice. *J. Natl. Cancer Inst.* 59: 221-226.
5. Pollack, M.S., Heagney, S.D., Livingston, P.O. and Fogh, J. 1981. HLA-A, B, C and DR alloantigen expression on forty-six cultured human tumor cell lines. *J. Natl. Cancer Inst.* 66: 1003-1012.
6. Chavany, C., Mimnaugh, E., Miller, P., Bitton, R., Nguyen, P., Trepel, J., Whitesell, L., Schnur, R., Moyer, J. and Neckers, L. 1996. p185erbB2 binds to GRP94 *in vivo*. *J. Biol. Chem.* 271: 4974-4977.

SOURCE

SK-BR-3 Whole Cell Lysate is derived from the SK-BR-3 cell line.

Organism:	<i>Homo sapiens</i> (human)
Organ:	Mammary gland; breast
Disease:	Adenocarcinoma
Derived from metastatic site:	Pleural effusion
Growth Properties:	Adherent epithelial

PRODUCT

Each vial contains 500 µg protein in 200 µl of an SDS-PAGE Western Blotting buffer, which consists of 100 µl RIPA Lysis Buffer and 100 µl Electrophoresis Buffer, 2X.

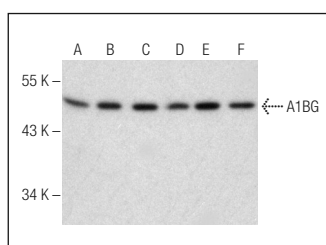
APPLICATIONS

SK-BR-3 Whole Cell Lysate is provided as a Western Blotting positive control. Recommended use is 50 µg (20 µl) per lane. Sample vial should be boiled once prior to use.

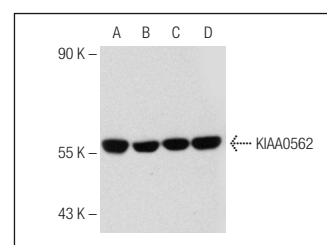
PREPARATION METHOD

Cells are cultured with appropriate media conditions and allowed to reach a confluency of 75%. Cells are lysed using the RIPA Lysis Buffer System (sc-24948). The BCA Protein Assay Kit (sc-202389) is used to determine the total protein concentration. The lysate is adjusted to contain 500 µg of total cellular protein in 100 µl before adding an equal volume of Electrophoresis Sample Buffer, 2X (sc-24945). Final concentration of product is 500 µg total protein in a final volume of 200 µl.

DATA



A1BG (E-15): sc-132611. Western blot analysis of A1BG expression in Hep G2 (A), HeLa (B), Jurkat (C), SK-BR-3 (D), TE 671 (E) and T-47D (F) whole cell lysates.



KIAA0562 (N-14): sc-164761. Western blot analysis of KIAA0562 expression in HeLa (A), MOLT-4 (B), SK-BR-3 (C) and Hep G2 (D) whole cell lysates.

STORAGE

Store at -20° C; stable for one year from the date of shipment. Non-hazardous. No MSDS required. Minimize repeated freezing and thawing.

RESEARCH USE

For research use only, not for use in diagnostic procedures.

PROTOCOLS

See our web site at www.scbt.com or our catalog for detailed protocols and support products.