



SZABO SCANDIC

Part of Europa Biosite

Produktinformation



Forschungsprodukte & Biochemikalien



Zellkultur & Verbrauchsmaterial



Diagnostik & molekulare Diagnostik



Laborgeräte & Service

Weitere Information auf den folgenden Seiten!
See the following pages for more information!



Lieferung & Zahlungsart

siehe unsere [Liefer- und Versandbedingungen](#)

Zuschläge

- Mindermengenzuschlag
- Trockeneiszuschlag
- Gefahrgutzuschlag
- Expressversand

SZABO-SCANDIC HandelsgmbH

Quellenstraße 110, A-1100 Wien

T. +43(0)1 489 3961-0

F. +43(0)1 489 3961-7

mail@szabo-scandic.com

www.szabo-scandic.com

[linkedin.com/company/szaboscandic](https://www.linkedin.com/company/szaboscandic) 

BT-20 Cell Lysate: sc-2223

BACKGROUND

Santa Cruz Biotechnology, Inc. offers a range of mammalian protein whole cell lysates for your proteomics research. Human (*Homo sapiens*), mouse (*Mus musculus*), and rat (*Rattus norvegicus*) whole cell lysates are enriched from in vitro suspension-type, or adherent-type cell cultures, that are maintained under controlled conditions, and according to each lineage specific cell culture specification. Immunoprecipitation (IP)-ready mammalian whole cell lysates contain non-denatured/intact proteins, and are suitable for antibody-dependent enrichment of endogenous proteins. Western blotting (WB)-ready mammalian whole cell lysates for SDS-PAGE contain denatured and reduced proteins, from endogenous or transfected 293T cell sources, and are suitable for use as Western blotting protein expression controls. Protein extraction methodology (RIPA Lysis Buffer System, (sc-24948)) ensures both protein integrity, and lot-to-lot reproducibility. Each whole cell preparation contains a consistent concentration and assortment of membrane, nuclear, and cytosolic proteins.

SOURCE

BT-20 Cell Lysate is derived from the BT-20 cell line.

Organism: Human (*Homo sapiens*)
Morphology: Epithelial
Tissue of Origin: Breast; mammary gland
Disease: Carcinoma

PRODUCT

Western blotting (WB)-ready (denatured and reduced protein) endogenous whole cell lysates are ready to load for SDS-PAGE, and are provided in a single vial. Each vial contains 500 µg protein in 200 µl [2.5 µg/µl], containing 2X Electrophoresis Sample Buffer (sc-24945).

APPLICATIONS

Western blotting (WB)-ready endogenous mammalian protein whole cell lysates (for SDS-PAGE) are provided at a final concentration of 500 µg protein in 200 µl [2.5 µg/µl]. Thaw/heat at 95° C for 3-5 minutes. For endogenous controls, load up to 20 µl (50 µg) per lane (15 well (8.0 cm x 8.0 cm) gel).

PREPARATION METHOD

Mammalian cells are cultured *in vitro* under an appropriate buffered media condition to either an optimal suspension cell density, or optimal adherent cell sub-confluency. Cells are then harvested from cell culture media for protein extraction using the RIPA Lysis Buffer System (sc-24948). Bicinchoninic acid (BCA) protein assay calibration determines the protein concentration for each preparation. Western blotting (WB)-ready endogenous whole cell lysates contain 500 µg protein in 200 µl [2.5 µg/µl] at 1:1 with 2X Electrophoresis Sample Buffer (sc-24945).

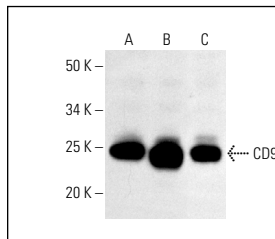
STORAGE

Store at -20° C, avoid repeated freeze/thaw cycles. Stable for one year from the date of shipment. Non-hazardous. No MSDS required.

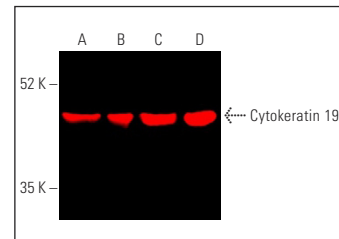
RESEARCH USE

For research use only, not for use in diagnostic procedures.

DATA



CD9 (C-4): sc-13118. Western blot analysis of CD9 expression in BT-20 (A), ZR75-1 (B) and HeLa (C) whole cell lysates.



Cytokeratin 19 (A53-B/A2): sc-6278. Near-Infrared western blot analysis of Cytokeratin 19 expression in SK-BR-3 (A), BT-20 (B), MCF7 (C) and T-47D (D) whole cell lysates. Blocked with UltraCruz[®] Blocking Reagent: sc-516214. Detection reagent used: m-IgG_{2a} BP-CFL 790: sc-542740.

SELECT PRODUCT CITATIONS

- Lin, J.C., et al. 2014. Elevated SRPK1 lessens apoptosis in breast cancer cells through RBM4-regulated splicing events. *RNA*. 20: 1621-1631.

PROTOCOLS

See our web site at www.scbt.com for detailed protocols and support products