



# SZABO SCANDIC

Part of Europa Biosite

## Produktinformation



Forschungsprodukte & Biochemikalien



Zellkultur & Verbrauchsmaterial



Diagnostik & molekulare Diagnostik



Laborgeräte & Service

Weitere Information auf den folgenden Seiten!  
See the following pages for more information!



### Lieferung & Zahlungsart

siehe unsere [Liefer- und Versandbedingungen](#)

### Zuschläge

- Mindermengenzuschlag
- Trockeneiszuschlag
- Gefahrgutzuschlag
- Expressversand

### SZABO-SCANDIC HandelsgmbH

Quellenstraße 110, A-1100 Wien

T. +43(0)1 489 3961-0

F. +43(0)1 489 3961-7

[mail@szabo-scandic.com](mailto:mail@szabo-scandic.com)

[www.szabo-scandic.com](http://www.szabo-scandic.com)

[linkedin.com/company/szaboscandic](https://www.linkedin.com/company/szaboscandic) 

# CCRF-CEM Cell Lysate: sc-2225

## BACKGROUND

Santa Cruz Biotechnology offers a variety of whole cell lysates for use in combination with our antibodies as Western Blotting controls. CCRF-CEM Whole Cell Lysate is derived from the CCRF-CEM cell line using a procedure that ensures protein integrity and lot-to-lot reproducibility. All lysates are tested by Western Blotting to assure that each one contains the expected concentration and assortment of proteins. Numerous antibodies directed against a wide array of mammalian proteins are used to test each lysate.

Derived from a 4 year old female Caucasian, CCRF-CEM is generated from human T lymphoblast cell line from acute lymphoblastic leukemia, lymphoblastoid cells.

## REFERENCES

1. Foley, G.E., Lazarus, H., Farber, S., Uzman, B.G., Boone, B.A., McCarthy, R.E. 1965. Continuous culture of human lymphoblasts from peripheral blood of a child with acute leukemia. *Cancer* 18: 522-529.
2. Adams, R.A. 1967. Formal discussion: the role of transplantation in the experimental investigation of human leukemia and lymphoma. *Cancer Res.* 27: 2479-2482.
3. Sandstrom, P.A. and Buttke, T.M. 1993. Autocrine production of extracellular catalase prevents apoptosis of the human CEM T-cell line in serum-free medium. *Proc. Natl. Acad. Sci. USA* 90: 4708-4712.

## SOURCE

CCRF-CEM Whole Cell Lysate is derived from the CCRF-CEM cell line.

Organism: *Homo sapiens* (human)  
 Organ: Peripheral blood  
 Disease: Acute lymphoblastic leukemia  
 Growth Properties: Suspension

## PRODUCT

Each vial contains 500 µg protein in 200 µl of an SDS-PAGE Western Blotting buffer, which consists of 100 µl RIPA Lysis Buffer and 100 µl Electrophoresis Buffer, 2X.

## APPLICATIONS

CCRF-CEM Whole Cell Lysate is provided as a Western Blotting positive control. Recommended use is 50 µg (20 µl) per lane. Sample vial should be boiled once prior to use.

## STORAGE

Store at -20° C; stable for one year from the date of shipment. Non-hazardous. No MSDS required. Minimize repeated freezing and thawing.

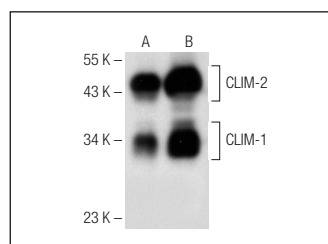
## PROTOCOLS

See our web site at [www.scbt.com](http://www.scbt.com) or our catalog for detailed protocols and support products.

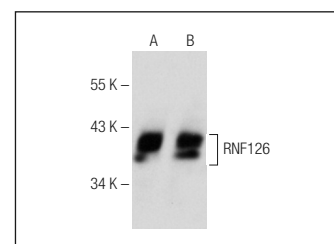
## PREPARATION METHOD

Cells are cultured with appropriate media conditions and allowed to reach a confluency of 75%. Cells are lysed using the RIPA Lysis Buffer System (sc-24948). The BCA Protein Assay Kit (sc-202389) is used to determine the total protein concentration. The lysate is adjusted to contain 500 µg of total cellular protein in 100 µl before adding an equal volume of Electrophoresis Sample Buffer, 2X (sc-24945). Final concentration of product is 500 µg total protein in a final volume of 200 µl.

## DATA



CLIM-1/2 (A-3): sc-376030. Western blot analysis of CLIM-1/2 expression in HeLa nuclear extract (A) and CCRF-CEM whole cell lysate (B).



RNF126 (C-1): sc-376005. Western blot analysis of RNF126 expression in Jurkat (A) and CCRF-CEM (B) whole cell lysates.

## RESEARCH USE

For research use only, not for use in diagnostic procedures.