



SZABO SCANDIC

Part of Europa Biosite

Produktinformation



Forschungsprodukte & Biochemikalien



Zellkultur & Verbrauchsmaterial



Diagnostik & molekulare Diagnostik



Laborgeräte & Service

Weitere Information auf den folgenden Seiten!
See the following pages for more information!



Lieferung & Zahlungsart

siehe unsere [Liefer- und Versandbedingungen](#)

Zuschläge

- Mindermengenzuschlag
- Trockeneiszuschlag
- Gefahrgutzuschlag
- Expressversand

SZABO-SCANDIC HandelsgmbH

Quellenstraße 110, A-1100 Wien

T. +43(0)1 489 3961-0

F. +43(0)1 489 3961-7

mail@szabo-scandic.com

www.szabo-scandic.com

[linkedin.com/company/szaboscandic](https://www.linkedin.com/company/szaboscandic) 

COLO 320DM Cell Lysate: sc-2226

BACKGROUND

Santa Cruz Biotechnology offers a variety of whole cell lysates for use in combination with our antibodies as Western Blotting controls. COLO 320DM Whole Cell Lysate is derived from the COLO 320DM cell line using a procedure that ensures protein integrity and lot-to-lot reproducibility. All lysates are tested by Western Blotting to assure that each one contains the expected concentration and assortment of proteins. Numerous antibodies directed against a wide array of mammalian proteins are used to test each lysate.

The COLO 320DM line is negative for CEA, CSAP and colon antigen 3. The cells are weakly positive for keratins and vimentin.

REFERENCES

- Quinn, L.A., Moore, G.E., Morgan, R.T. and Woods, L.K. 1979. Cell lines from human colon carcinoma with unusual cell products, double minutes, and homogeneously staining regions. *Cancer Res.* 39: 4914-4924.
- Trainer, D.L., Kline, T., McCabe, F.L., Faucette, L.F., Feild, J., Chaikin, M., Anzano, M., Rieman, D., Hoffstein, S., Li, D.J., et al. 1988. Biological characterization and oncogene expression in human colorectal carcinoma cell lines. *Int. J. Cancer* 41: 287-296.

SOURCE

COLO 320DM Whole Cell Lysate is derived from the COLO 320DM cell line.

Organism: *Homo sapiens* (human)
 Organ: Colon
 Disease: Colorectal adenocarcinoma
 Tumor Stage: Dukes' type C
 Growth Properties: Mixed, adherent and suspension

PRODUCT

Each vial contains 500 µg protein in 200 µl of an SDS-PAGE Western Blotting buffer, which consists of 100 µl RIPA Lysis Buffer and 100 µl Electrophoresis Buffer, 2X.

APPLICATIONS

COLO 320DM Whole Cell Lysate is provided as a Western Blotting positive control. Recommended use is 50 µg (20 µl) per lane. Sample vial should be boiled once prior to use.

PREPARATION METHOD

Cells are cultured with appropriate media conditions and allowed to reach a confluency of 75%. Cells are lysed using the RIPA Lysis Buffer System (sc-24948). The BCA Protein Assay Kit (sc-202389) is used to determine the total protein concentration. The lysate is adjusted to contain 500 µg of total cellular protein in 100 µl before adding an equal volume of Electrophoresis Sample Buffer, 2X (sc-24945). Final concentration of product is 500 µg total protein in a final volume of 200 µl.

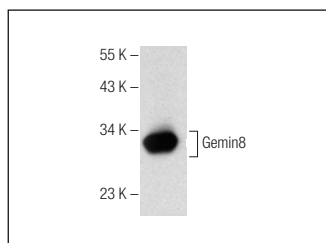
STORAGE

Store at -20° C; stable for one year from the date of shipment. Non-hazardous. No MSDS required. Minimize repeated freezing and thawing.

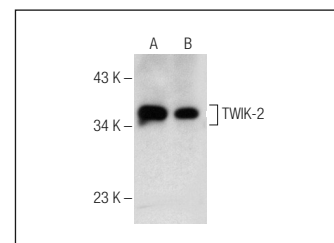
RESEARCH USE

For research use only, not for use in diagnostic procedures.

DATA



Gemin8 (B-6): sc-376518. Western blot analysis of Gemin8 expression in COLO 320DM whole cell lysate.



TWIK-2 (H-6): sc-376515. Western blot analysis of TWIK-2 expression in MIA PaCa-2 (A) and COLO 320DM (B) whole cell lysates.

SELECT PRODUCT CITATIONS

- Sharma, D., Saxena, N.K., Vertino, P.M. and Anania, F.A. 2006. Leptin promotes proliferative response and invasiveness in human endometrial cancer cells by activating multiple signal transduction pathways. *Endocr. Relat. Cancer* 13: 629-640.
- Palmer, G. and Aurand-Lions, M. 2006. Indirect effects of leptin receptor deficiency on lymphocyte populations and immune response in db/db mice. *J. Immunol.* 177: 2899-2907.
- Ogunwobi, O., Mutungi, G. and Beales, I.L. 2006. Leptin stimulates proliferation and inhibits apoptosis in Barrett's esophageal adenocarcinoma cells by cyclooxygenase-2-dependent, prostaglandin-E2-mediated transactivation of the epidermal growth factor receptor and c-Jun NH₂-terminal kinase activation. *Endocrinology* 147: 4505-4516.
- Saxena, N.K. and Vertino, P.M. 2007. Leptin-induced growth stimulation of breast cancer cells involves recruitment of histone acetyltransferases and mediator complex to cyclin D1 promoter via activation of Stat3. *J. Biol. Chem.* 282: 13316-13325.
- Szebeni, B., Veres, G., Dezsöfi, A., Rusai, K., Vannay, A., Bokodi, G., Vársárhelyi, B., Korponay-Szabó, I.R., Tulassay, T. and Arató, A. 2007. Increased mucosal expression of Toll-like receptor (TLR) 2 and TLR4 in coeliac disease. *J. Pediatr. Gastroenterol. Nutr.* 45: 187-193.
- Saxena, N.K., Sharma, D., Ding, X., Lin, S., Marra, F., Merlin, D. and Anania, F.A. 2007. Concomitant activation of the JAK/STAT, PI3K/AKT, and ERK signaling is involved in leptin-mediated promotion of invasion and migration of hepatocellular carcinoma cells. *Cancer Res.* 67: 2497-2507.
- Palladino, M.A., Savarese, M.A., Chapman, J.L., Dughi, M.K. and Plaska, D. 2008. Localization of Toll-like receptors on epididymal epithelial cells and spermatozoa. *Am. J. Reprod. Immunol.* 60: 541-555.
- Szebeni, B., Veres, G., Dezsöfi, A., Rusai, K., Vannay, A., Mráz, M., Majorova, E. and Arató, A. 2008. Increased expression of Toll-like receptor (TLR) 2 and TLR4 in the colonic mucosa of children with inflammatory bowel disease. *Clin. Exp. Immunol.* 151: 34-41.