



SZABO SCANDIC

Part of Europa Biosite

Produktinformation



Forschungsprodukte & Biochemikalien



Zellkultur & Verbrauchsmaterial



Diagnostik & molekulare Diagnostik



Laborgeräte & Service

Weitere Information auf den folgenden Seiten!
See the following pages for more information!



Lieferung & Zahlungsart

siehe unsere [Liefer- und Versandbedingungen](#)

Zuschläge

- Mindermengenzuschlag
- Trockeneiszuschlag
- Gefahrgutzuschlag
- Expressversand

SZABO-SCANDIC HandelsgmbH

Quellenstraße 110, A-1100 Wien

T. +43(0)1 489 3961-0

F. +43(0)1 489 3961-7

mail@szabo-scandic.com

www.szabo-scandic.com

[linkedin.com/company/szaboscandic](https://www.linkedin.com/company/szaboscandic) 

HISM Whole Cell Lysate: sc-2229

BACKGROUND

Santa Cruz Biotechnology offers a variety of whole cell lysates for use in combination with our antibodies as Western Blotting controls. HISM Whole Cell Lysate is derived from the HISM cell line using a procedure that ensures protein integrity and lot-to-lot reproducibility. All lysates are tested by Western Blotting to assure that each one contains the expected concentration and assortment of proteins. Numerous antibodies directed against a wide array of mammalian proteins are used to test each lysate.

The HISM cell line was derived from the muscularis propria of the jejunum of a normal 35 year old female patient. It synthesizes collagen and contains actin stress fibers. It contracts in response to the C-terminal octapeptide of cholecystokinin. HISM is a normal diploid human cell line with 46,XX karyotype. One each of N9 and N16 had short centromeric heterochromatin. Both X chromosomes were normal. Progeny from the distribution stock of HISM (P13) have been shown to undergo approximately 10-12 population doublings from the frozen state before the onset of senescence in longevity studies conducted during characterization.

REFERENCES

- Graham, M.F., Diegelmann, R.F., Elson, C.O., Bitar, K.N. and Ehrlich, H. 1984. Isolation and culture of human intestinal smooth muscle cells. *Proc. Soc. Exp. Biol. Med.* 176: 503-507

SOURCE

HISM Whole Cell Lysate is derived from the HISM cell line.

Organism: *Homo sapiens* (human)
Tissue: Intestine
Cell Type: Smooth muscle
Growth properties: Adherent

PRODUCT

Each vial contains 500 µg protein in 200 µl of an SDS-PAGE Western Blotting buffer, which consists of 100 µl RIPA Lysis Buffer and 100 µl Electrophoresis Buffer, 2X.

APPLICATIONS

HISM Whole Cell Lysate is provided as a Western Blotting positive control. Recommended use is 50 µg (20 µl) per lane. Sample vial should be boiled once prior to use.

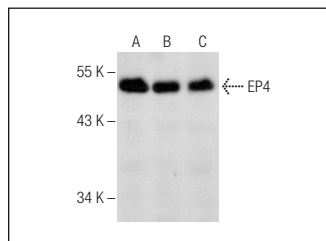
PREPARATION METHOD

Cells are cultured with appropriate media conditions and allowed to reach a confluency of 75%. Cells are lysed using the RIPA Lysis Buffer System (sc-24948). The BCA Protein Assay Kit (sc-202389) is used to determine the total protein concentration. The lysate is adjusted to contain 500 µg of total cellular protein in 100 µl before adding an equal volume of Electrophoresis Sample Buffer, 2X (sc-24945). Final concentration of product is 500 µg total protein in a final volume of 200 µl.

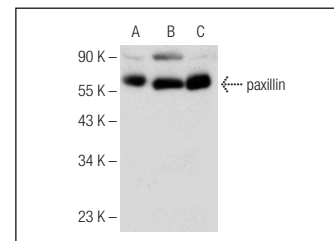
STORAGE

Store at -20° C; stable for one year from the date of shipment. Non-hazardous. No MSDS required. Minimize repeated freezing and thawing.

DATA



EP4 (C-4): sc-55596. Western blot analysis of EP4 expression in Jurkat (A), Ramos (B) and HISM (C) whole cell lysates.



paxillin (C-1): sc-373880. Western blot analysis of paxillin expression in HISM (A), ECV304 (B) and CCD-1064Sk (C) whole cell lysates.

RESEARCH USE

For research use only, not for use in diagnostic procedures.

PROTOCOLS

See our web site at www.scbt.com or our catalog for detailed protocols and support products.