



SZABO SCANDIC

Part of Europa Biosite

Produktinformation



Forschungsprodukte & Biochemikalien



Zellkultur & Verbrauchsmaterial



Diagnostik & molekulare Diagnostik



Laborgeräte & Service

Weitere Information auf den folgenden Seiten!
See the following pages for more information!



Lieferung & Zahlungsart

siehe unsere [Liefer- und Versandbedingungen](#)

Zuschläge

- Mindermengenzuschlag
- Trockeneiszuschlag
- Gefahrgutzuschlag
- Expressversand

SZABO-SCANDIC HandelsgmbH

Quellenstraße 110, A-1100 Wien

T. +43(0)1 489 3961-0

F. +43(0)1 489 3961-7

mail@szabo-scandic.com

www.szabo-scandic.com

[linkedin.com/company/szaboscandic](https://www.linkedin.com/company/szaboscandic)

MDA-MB-231 Cell Lysate: sc-2232

BACKGROUND

Santa Cruz Biotechnology offers a variety of whole cell lysates for use in combination with our antibodies as Western Blotting controls. MDA-MB-231 Whole Cell Lysate is derived from the MDA-MB-231 cell line using a procedure that ensures protein integrity and lot-to-lot reproducibility. All lysates are tested by Western Blotting to assure that each one contains the expected concentration and assortment of proteins. Numerous antibodies directed against a wide array of mammalian proteins are used to test each lysate.

MDA-MB-231 cell line was established from a 51 year old female Caucasian. The cells express the WNT7B oncogene as well as receptors for epidermal growth factor (EGF) and transforming growth factor α (TGF α).

REFERENCES

- Cailleau, R., Cruciger, Q., Hokanson, K. M., Olive, M. and Blumenschein, G. 1976. Morphological, biochemical and chromosomal characterization of breast tumor lines from pleural effusions. *In Vitro* 12: 331.
- Siciliano, M.J., Barker, P.E. and Cailleau, R. 1979. Mutually exclusive genetic signatures of human breast tumor cell lines with a common chromosomal marker. *Cancer Res.* 39: 919-922.
- Brinkley, B.R., Beall, P.T., Wible, L.J., Mace, M.L., Turner, D.S. and Cailleau, R.M. 1980. Variations in cell form and cytoskeleton in human breast carcinoma cells *in vitro*. *Cancer Res.* 40: 3118-3129.

SOURCE

MDA-MB-231 Cell Lysate is derived from the MDA-MB-231 cell line.

Organism:	<i>Homo sapiens</i> (human)
Organ:	Mammary gland; breast
Disease:	Adenocarcinoma
Derived from metastatic site:	Pleural effusion
Growth Properties:	Adherent

PRODUCT

Each vial contains 500 μ g protein in 200 μ l of an SDS-PAGE Western Blotting buffer, which consists of 100 μ l RIPA Lysis Buffer and 100 μ l Electrophoresis Buffer, 2X.

APPLICATIONS

MDA-MB-231 Whole Cell Lysate is provided as a Western Blotting positive control. Recommended use is 50 μ g (20 μ l) per lane. Sample vial should be boiled once prior to use.

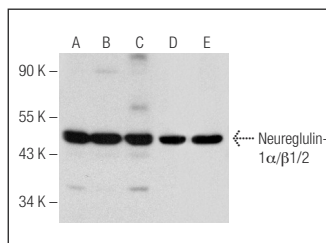
PREPARATION METHOD

Cells are cultured with appropriate media conditions and allowed to reach a confluency of 75%. Cells are lysed using the RIPA Lysis Buffer System (sc-24948). The BCA Protein Assay Kit (sc-202389) is used to determine the total protein concentration. The lysate is adjusted to contain 500 μ g of total cellular protein in 100 μ l before adding an equal volume of Electrophoresis Sample Buffer, 2X (sc-24945). Final concentration of product is 500 μ g total protein in a final volume of 200 μ l.

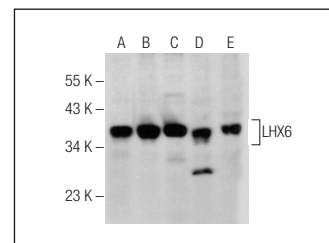
STORAGE

Store at -20 $^{\circ}$ C; stable for one year from the date of shipment. Non-hazardous. No MSDS required. Minimize repeated freezing and thawing.

DATA



Neuregulin-1 α / β 1/2 (C-20): sc-348. Western blot analysis of Neuregulin-1 α / β 1/2 expression in A-431 (A), MCF7 (B), MDA-MB-231 (C), SK-BR-3 (D) and HeLa (E) whole cell lysates.



LHX6 (JJ-06): sc-81970. Western blot analysis of LHX6 expression in NIH/3T3 (A), MDA-MB-231 (B), T-47D (C), U87-MG (D) and PC-3 (E) whole cell lysates.

RESEARCH USE

For research use only, not for use in diagnostic procedures.

PROTOCOLS

See our web site at www.scbt.com or our catalog for detailed protocols and support products.