



# SZABO SCANDIC

Part of Europa Biosite

## Produktinformation



Forschungsprodukte & Biochemikalien



Zellkultur & Verbrauchsmaterial



Diagnostik & molekulare Diagnostik



Laborgeräte & Service

Weitere Information auf den folgenden Seiten!  
See the following pages for more information!



### Lieferung & Zahlungsart

siehe unsere [Liefer- und Versandbedingungen](#)

### Zuschläge

- Mindermengenzuschlag
- Trockeneiszuschlag
- Gefahrgutzuschlag
- Expressversand

### SZABO-SCANDIC HandelsgmbH

Quellenstraße 110, A-1100 Wien

T. +43(0)1 489 3961-0

F. +43(0)1 489 3961-7

[mail@szabo-scandic.com](mailto:mail@szabo-scandic.com)

[www.szabo-scandic.com](http://www.szabo-scandic.com)

[linkedin.com/company/szaboscandic](https://www.linkedin.com/company/szaboscandic) 

# SK-MEL-28 Cell Lysate: sc-2236

## BACKGROUND

Santa Cruz Biotechnology offers a variety of whole cell lysates for use in combination with our antibodies as Western Blotting controls. SK-MEL-28 Whole Cell Lysate is derived from the SK-MEL-28 cell line using a procedure that ensures protein integrity and lot-to-lot reproducibility. All lysates are tested by Western Blotting to assure that each one contains the expected concentration and assortment of proteins. Numerous antibodies directed against a wide array of mammalian proteins are used to test each lysate.

SK-MEL-28 is derived from a 51 year old adult male. This is one of a very extensive series of melanoma lines isolated by T. Takahashi and associates.

## REFERENCES

- Carey, T.E., Takahashi, T., Resnick, L.A., Oettgen, H.F. and Old, L.J. 1976. Cell surface antigens of human malignant mela-noma: mixed hemadsorption assays for humoral immunity to cultured autologous melanoma cells. *Proc. Natl. Acad. Sci. USA* 73: 3278-3282.
- Fogh, J., Fogh, J.M. and Orfeo, T. 1977. One hundred and twenty-seven cultured human tumor cell lines producing tumors in nude mice. *J. Natl. Cancer Inst.* 59: 221-226.
- Pollack, M.S., Heagney, S.D., Livingston, P.O. and Fogh, J. 1981. HLA-A, B, C and DR alloantigen expression on forty-six cultured human tumor cell lines. *J. Natl. Cancer Inst.* 66: 1003-1012.

## SOURCE

SK-MEL-28 Whole Cell Lysate is derived from the CSK-MEL-28 cell line.

Organism: *Homo sapiens* (human)  
 Organ: Skin  
 Disease: Malignant melanoma  
 Growth Properties: Adherent

## PRODUCT

Each vial contains 500 µg protein in 200 µl of an SDS-PAGE Western Blotting buffer, which consists of 100 µl RIPA Lysis Buffer and 100 µl Electrophoresis Buffer, 2X.

## APPLICATIONS

SK-MEL-28 Whole Cell Lysate is provided as a Western Blotting positive control. Recommended use is 50 µg (20 µl) per lane. Sample vial should be boiled once prior to use.

## STORAGE

Store at -20° C; stable for one year from the date of shipment. Non-hazardous. No MSDS required. Minimize repeated freezing and thawing.

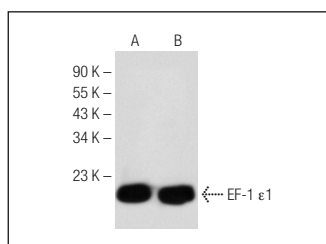
## PROTOCOLS

See our web site at [www.scbt.com](http://www.scbt.com) or our catalog for detailed protocols and support products.

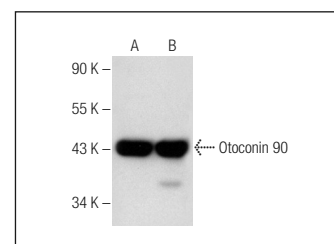
## PREPARATION METHOD

Cells are cultured with appropriate media conditions and allowed to reach a confluency of 75%. Cells are lysed using the RIPA Lysis Buffer System (sc-24948). The BCA Protein Assay Kit (sc-202389) is used to determine the total protein concentration. The lysate is adjusted to contain 500 µg of total cellular protein in 100 µl before adding an equal volume of Electrophoresis Sample Buffer, 2X (sc-24945). Final concentration of product is 500 µg total protein in a final volume of 200 µl.

## DATA



EF-1 ε1 (E-4): sc-376019. Western blot analysis of EF-1 ε1 expression in SK-MEL-28 (A) and OV-90 (B) whole cell lysates.



Otoconin 90 (D-2): sc-376855. Western blot analysis of Otoconin 90 expression in mouse brain tissue extract (A) and SK-MEL-28 whole cell lysate (B).

## RESEARCH USE

For research use only, not for use in diagnostic procedures.