



# SZABO SCANDIC

Part of Europa Biosite

## Produktinformation



Forschungsprodukte & Biochemikalien



Zellkultur & Verbrauchsmaterial



Diagnostik & molekulare Diagnostik



Laborgeräte & Service

Weitere Information auf den folgenden Seiten!  
See the following pages for more information!



### Lieferung & Zahlungsart

siehe unsere [Liefer- und Versandbedingungen](#)

### Zuschläge

- Mindermengenzuschlag
- Trockeneiszuschlag
- Gefahrgutzuschlag
- Expressversand

### SZABO-SCANDIC HandelsgmbH

Quellenstraße 110, A-1100 Wien

T. +43(0)1 489 3961-0

F. +43(0)1 489 3961-7

[mail@szabo-scandic.com](mailto:mail@szabo-scandic.com)

[www.szabo-scandic.com](http://www.szabo-scandic.com)

[linkedin.com/company/szaboscandic](https://www.linkedin.com/company/szaboscandic) 

# SK-N-MC Cell Lysate: sc-2237

## BACKGROUND

Santa Cruz Biotechnology offers a variety of whole cell lysates for use in combination with our antibodies as Western Blotting controls. SK-N-MC Whole Cell Lysate is derived from the SK-N-MC cell line using a procedure that ensures protein integrity and lot-to-lot reproducibility. All lysates are tested by Western Blotting to assure that each one contains the expected concentration and assortment of proteins. Numerous antibodies directed against a wide array of mammalian proteins are used to test each lysate.

SK-N-MC is one of two cell lines of neurogenic origin derived by J.L. Biedler. It was isolated in September 1971 and was found to have moderate dopamine- $\beta$ -hydroxylase activity as well as formaldehyde-induced fluorescence indicative of intracellular catecholamines.

## REFERENCES

1. Biedler, J.L., Helson, L. and Spengler, B.A. 1973. Morphology and growth, tumorigenicity, and cytogenetics of human neuroblastoma cells established *in vitro*. *In Vitro* 8: 410.
2. Fogh, J., Fogh, J.M. and Orfeo, T. 1977. One hundred and twenty-seven cultured human tumor cell lines producing tumors in nude mice. *J. Natl. Cancer Inst.* 59: 221-226.
3. Seeger, R.C., Rayner, S.A., Banerjee, A., Chung, H., Laug, W.E., Neustein, H.B. and Benedict, W.F. 1977. Morphology, growth, chromosomal pattern and fibrinolytic activity of two new human neuroblastoma cell lines. *Cancer Res.* 37: 1364-1371.

## SOURCE

SK-N-MC Whole Cell Lysate is derived from the SK-N-MC cell line.

Organism: *Homo sapiens* (human)  
 Organ: Brain  
 Disease: Neuroepithelioma  
 Growth Properties: Adherent

## PRODUCT

Each vial contains 500  $\mu$ g protein in 200  $\mu$ l of an SDS-PAGE Western Blotting buffer, which consists of 100  $\mu$ l RIPA Lysis Buffer and 100  $\mu$ l Electrophoresis Buffer, 2X.

## APPLICATIONS

SK-N-MC Whole Cell Lysate is provided as a Western Blotting positive control. Recommended use is 50  $\mu$ g (20  $\mu$ l) per lane. Sample vial should be boiled once prior to use.

## STORAGE

Store at -20 $^{\circ}$  C; stable for one year from the date of shipment. Non-hazardous. No MSDS required. Minimize repeated freezing and thawing.

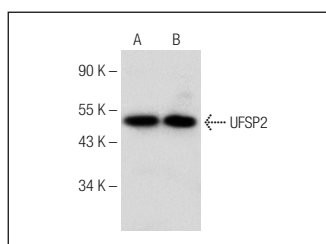
## PROTOCOLS

See our web site at [www.scbt.com](http://www.scbt.com) or our catalog for detailed protocols and support products.

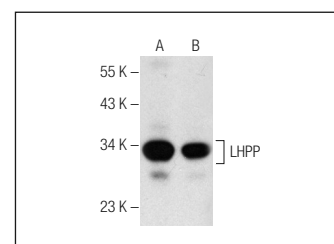
## PREPARATION METHOD

Cells are cultured with appropriate media conditions and allowed to reach a confluency of 75%. Cells are lysed using the RIPA Lysis Buffer System (sc-24948). The BCA Protein Assay Kit (sc-202389) is used to determine the total protein concentration. The lysate is adjusted to contain 500  $\mu$ g of total cellular protein in 100  $\mu$ l before adding an equal volume of Electrophoresis Sample Buffer, 2X (sc-24945). Final concentration of product is 500  $\mu$ g total protein in a final volume of 200  $\mu$ l.

## DATA



UFSP2 (C-7): sc-376045. Western blot analysis of UFSP2 expression in HeLa (A) and SK-N-MC (B) whole cell lysates.



LHPP (B-2): sc-376648. Western blot analysis of LHPP expression in Hep G2 (A) and SK-N-MC (B) whole cell lysates.

## RESEARCH USE

For research use only, not for use in diagnostic procedures.