



# SZABO SCANDIC

Part of Europa Biosite

## Produktinformation



Forschungsprodukte & Biochemikalien



Zellkultur & Verbrauchsmaterial



Diagnostik & molekulare Diagnostik



Laborgeräte & Service

Weitere Information auf den folgenden Seiten!  
See the following pages for more information!



### Lieferung & Zahlungsart

siehe unsere [Liefer- und Versandbedingungen](#)

### Zuschläge

- Mindermengenzuschlag
- Trockeneiszuschlag
- Gefahrgutzuschlag
- Expressversand

### SZABO-SCANDIC HandelsgmbH

Quellenstraße 110, A-1100 Wien

T. +43(0)1 489 3961-0

F. +43(0)1 489 3961-7

[mail@szabo-scandic.com](mailto:mail@szabo-scandic.com)

[www.szabo-scandic.com](http://www.szabo-scandic.com)

[linkedin.com/company/szaboscandic](https://www.linkedin.com/company/szaboscandic) 

# CCD-1064Sk Cell Lysate: sc-2263

## BACKGROUND

Santa Cruz Biotechnology offers a variety of whole cell lysates for use in combination with our antibodies as Western Blotting controls. CCD-1064Sk Cell Lysate is derived from the CCD-1064Sk cell line using a procedure that ensures protein integrity and lot-to-lot reproducibility. All lysates are tested by Western Blotting to assure that each one contains the expected concentration and assortment of proteins. Numerous antibodies directed against a wide array of mammalian proteins are used to test each lysate.

The CCD-1064Sk cell line was established from skin taken from normal foreskin. The cells are capable of approximately 54 population doublings before the onset of senescence.

## REFERENCES

1. Ranefall, P., Wester, K., Andersson, A.C., Busch, C. and Bengtsson, E. 1998. Automatic quantification of immunohistochemically stained cell nuclei based on standard reference cells. *Anal. Cell Pathol.* 17: 111-123.
2. Feng, Z., Hu, W., Chen, J.X., Pao, A., Li, H., Rom, W., Hung, M.C. and Tang, M.S. 2002. Preferential DNA damage and poor repair determine ras gene mutational hotspot in human cancer. *J. Natl. Cancer Inst.* 94: 1527-1536.
3. Pariente, N., Mao, S.H., Morizono, K. and Chen, I.S. 2008. Efficient targeted transduction of primary human endothelial cells with dual-targeted lentiviral vectors. *J. Gene Med.* 10: 242-248.
4. Lozupone, F., Perdicchio, M., Brambilla, D., Borghi, M., Meschini, S., Barca, S., Marino, M.L., Logozzi, M., Federici, C., Iessi, E., de Milito, A. and Fais, S. 2009. The human homologue of *Dictyostelium discoideum* phg1A is expressed by human metastatic melanoma cells. *EMBO Rep.* 10: 1348-1354.
5. Prunotto, M., Bosco, M., Daniele, L., Macri', L., Bonello, L., Schirosi, L., Rossi, G., Filosso, P., Mussa, B. and Sapino, A. 2009. Imatinib inhibits *in vitro* proliferation of cells derived from a pleural solitary fibrous tumor expressing platelet-derived growth factor receptor- $\beta$ . *Lung Cancer* 64: 244-246.
6. Zhang, Y., Schulte, W., Pink, D., Phipps, K., Zijlstra, A., Lewis, J.D. and Waisman, D.M. 2010. Sensitivity of cancer cells to truncated diphtheria toxin. *PLoS ONE* 5: e10498.

## SOURCE

CCD-1064Sk Cell Lysate is derived from the CCD-1064Sk cell line.

Organism: *Homo sapiens* (human)  
Tissue: Foreskin  
Disease: Normal  
Cell Type: Fibroblast  
Growth Properties: Adherent

## PRODUCT

Each vial contains 500  $\mu$ g protein in 200  $\mu$ l of an SDS-PAGE Western Blotting buffer, which consists of 100  $\mu$ l RIPA Lysis Buffer and 100  $\mu$ l Electrophoresis Buffer, 2X.

## RESEARCH USE

For research use only, not for use in diagnostic procedures.

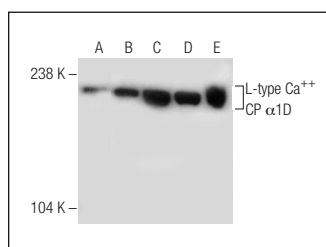
## APPLICATIONS

CCD-1064Sk Cell Lysate is provided as a Western Blotting positive control. Recommended use is 50  $\mu$ g (20  $\mu$ l) per lane. Sample vial should be boiled once prior to use.

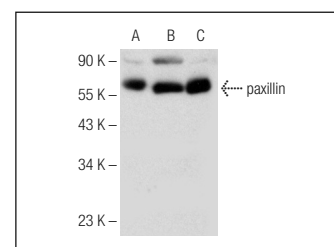
## PREPARATION METHOD

Cells are cultured with appropriate media conditions and allowed to reach a confluency of 75%. Cells are lysed using the RIPA Lysis Buffer System (sc-24948). The BCA Protein Assay Kit (sc-202389) is used to determine the total protein concentration. The lysate is adjusted to contain 500  $\mu$ g of total cellular protein in 100  $\mu$ l before adding an equal volume of Electrophoresis Sample Buffer, 2X (sc-24945). Final concentration of product is 500  $\mu$ g total protein in a final volume of 200  $\mu$ l.

## DATA



L-type Ca<sup>++</sup> CP  $\alpha$ 1F (H-160): sc-25688. Western blot analysis of L-type Ca<sup>++</sup> CP  $\alpha$ 1D expression in non-transfected 293T: sc-117752 (A), mouse L-type Ca<sup>++</sup> CP  $\alpha$ 1D transfected 293T: sc-121266 (B), Y79 (C), Hs 732.Sk/Mu (D) and CCD-1064Sk (E) whole cell lysates.



paxillin (C-1): sc-373880. Western blot analysis of paxillin expression in HISM (A), ECV304 (B) and CCD-1064Sk (C) whole cell lysates.

## SELECT PRODUCT CITATIONS

1. Hamai A and Richon C 2006. Imatinib enhances human melanoma cell susceptibility to TRAIL-induced cell death: relationship to Bcl-2 family and caspase activation. *Oncogene* 25: 7618-7634.
2. Rocconi, R.P., Matthews, K.S., Kimball, K.J., Conner, M.G., Baker, A.C. and Barnes, M.N. 2008. Expression of C-kit and platelet-derived growth factor receptors in ovarian granulosa cell tumors. *Reprod Sci.* 15: 673-677.

## STORAGE

Store at -20<sup>o</sup> C; stable for one year from the date of shipment. Non-hazardous. No MSDS required. Minimize repeated freezing and thawing.

## PROTOCOLS

See our web site at [www.scbt.com](http://www.scbt.com) or our catalog for detailed protocols and support products.