



SZABO SCANDIC

Part of Europa Biosite

Produktinformation



Forschungsprodukte & Biochemikalien



Zellkultur & Verbrauchsmaterial



Diagnostik & molekulare Diagnostik



Laborgeräte & Service

Weitere Information auf den folgenden Seiten!
See the following pages for more information!



Lieferung & Zahlungsart

siehe unsere [Liefer- und Versandbedingungen](#)

Zuschläge

- Mindermengenzuschlag
- Trockeneiszuschlag
- Gefahrgutzuschlag
- Expressversand

SZABO-SCANDIC HandelsgmbH

Quellenstraße 110, A-1100 Wien

T. +43(0)1 489 3961-0

F. +43(0)1 489 3961-7

mail@szabo-scandic.com

www.szabo-scandic.com

[linkedin.com/company/szaboscandic](https://www.linkedin.com/company/szaboscandic) 

DU 145 Cell Lysate: sc-2268

BACKGROUND

Santa Cruz Biotechnology offers a variety of whole cell lysates for use in combination with our antibodies as Western Blotting controls. DU 145 Whole Cell Lysate is derived from the DU 145 cell line using a procedure that ensures protein integrity and lot-to-lot reproducibility. All lysates are tested by Western Blotting to assure that each one contains the expected concentration and assortment of proteins. Numerous antibodies directed against a wide array of mammalian proteins are used to test each lysate.

DU 145 cell line was established from a 69 year old male Caucasian. The line is not detectably hormone sensitive, is only weakly positive for acid phosphatase and isolated cells form colonies in soft agar. The cells do not express prostate antigen.

REFERENCES

- Mickey D.D., Stone, K.R., Wunderli, H., Mickey, G.H., Vollmer, R.T. and Paulson, D.F. 1977. Heterotransplantation of a human prostatic adenocarcinoma cell line in nude mice. *Cancer Res.* 37: 4049-4058.
- Stone, K.R., Mickey, D.D., Wunderli, H., Mickey, G.H. and Paulson, D.F. 1978. Isolation of a human prostate carcinoma cell line (DU 145). *Int. J. Cancer* 21: 274-281.
- Papsidero, L.D., Kuriyama, M., Wang, M.C., Horoszewicz, J., Leong, S.S., Valenzuela, L., Murphy, G.P. and Chu, T.M. 1981. Prostate antigen: a marker for human prostate epithelial cells. *J. Natl. Cancer Inst.* 66: 37-42.
- Pollack, M.S., Heagney, S.D., Livingston, P.O. and Fogh, J. 1981. HLA-A, B, C and DR alloantigen expression on forty-six cultured human tumor cell lines. *J. Natl. Cancer Inst.* 66: 1003-1012.
- Robinson, D., He, F., Pretlow, T. and Kung, H.J. 1996. A tyrosine kinase profile of prostate carcinoma. *Proc. Natl. Acad. Sci. USA* 93: 5958-5962.
- Zhu, X., Kumar, R., Mandal, M., Sharma, N., Sharma, H.W., Dhingra, U., Sokoloski, J.A., Hsiao, R. and Narayanan, R. 1996. Cell cycle-dependent modulation of telomerase activity in tumor cells. *Proc. Natl. Acad. Sci. USA* 93: 6091-6095.
- Su, Z.Z., Lin, J., Shen, R., Fisher, P.E., Goldstein, N.I. and Fisher, P.B. 1996. Surface-epitope masking and expression cloning identifies the human prostate carcinoma tumor antigen gene PCTA-1 a member of the galectin gene family. *Proc. Natl. Acad. Sci. USA* 93: 7252-7257.
- Sheng, S., Carey, J., Seftor, E.A., Dias, L. and Hendrix, M.J. 1996. Maspin acts at the cell membrane to inhibit invasion and motility of mammary and prostatic cancer cells. *Proc. Natl. Acad. Sci. USA* 93: 11669-11674.

SOURCE

DU 145 Whole Cell Lysate is derived from the DU 145 cell line.

Organism:	<i>Homo sapiens</i> (human)
Organ:	Prostate
Disease:	Carcinoma
Derived from metastatic site:	Brain
Growth Properties:	Adherent epithelial

PRODUCT

Each vial contains 500 µg protein in 200 µl of an SDS-PAGE Western Blotting buffer, which consists of 100 µl RIPA Lysis Buffer and 100 µl Electrophoresis Buffer, 2X.

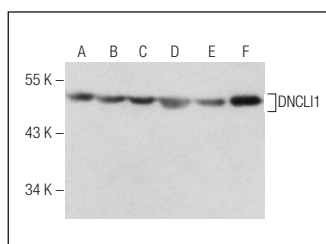
APPLICATIONS

DU 145 Whole Cell Lysate is provided as a Western Blotting positive control. Recommended use is 50 µg (20 µl) per lane. Sample vial should be boiled once prior to use.

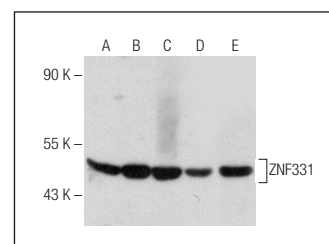
PREPARATION METHOD

Cells are cultured with appropriate media conditions and allowed to reach a confluency of 75%. Cells are lysed using the RIPA Lysis Buffer System (sc-24948). The BCA Protein Assay Kit (sc-202389) is used to determine the total protein concentration. The lysate is adjusted to contain 500 µg of total cellular protein in 100 µl before adding an equal volume of Electrophoresis Sample Buffer, 2X (sc-24945). Final concentration of product is 500 µg total protein in a final volume of 200 µl.

DATA



DNCL11 (N-16): sc-102492. Western blot analysis of DNCL11 expression in HeLa (A), K-562 (B), Ramos (C), Raji (D), MIA PaCa-2 (E) and DU 145 (F) whole cell lysates.



ZNF331 (S-16): sc-249525. Western blot analysis of ZNF331 expression in MCF7 (A), DU 145 (B), HL-60 (C) and WI 38 (D) whole cell lysates and human kidney tissue extract (E).

STORAGE

Store at -20° C; stable for one year from the date of shipment. Non-hazardous. No MSDS required. Minimize repeated freezing and thawing.

RESEARCH USE

For research use only, not for use in diagnostic procedures.

PROTOCOLS

See our web site at www.scbt.com or our catalog for detailed protocols and support products.