



SZABO SCANDIC

Part of Europa Biosite

Produktinformation



Forschungsprodukte & Biochemikalien



Zellkultur & Verbrauchsmaterial



Diagnostik & molekulare Diagnostik



Laborgeräte & Service

Weitere Information auf den folgenden Seiten!
See the following pages for more information!



Lieferung & Zahlungsart

siehe unsere [Liefer- und Versandbedingungen](#)

Zuschläge

- Mindermengenzuschlag
- Trockeneiszuschlag
- Gefahrgutzuschlag
- Expressversand

SZABO-SCANDIC HandelsgmbH

Quellenstraße 110, A-1100 Wien

T. +43(0)1 489 3961-0

F. +43(0)1 489 3961-7

mail@szabo-scandic.com

www.szabo-scandic.com

[linkedin.com/company/szaboscandic](https://www.linkedin.com/company/szaboscandic) 

MEG-01 Whole Cell Lysate: sc-2283

BACKGROUND

Santa Cruz Biotechnology offers a variety of whole cell lysates for use in combination with our antibodies as Western Blotting controls. MEG-01 Whole Cell Lysate is derived from the MEG-01 cell line using a procedure that ensures protein integrity and lot-to-lot reproducibility. All lysates are tested by Western Blotting to assure that each one contains the expected concentration and assortment of proteins. Numerous antibodies directed against a wide array of mammalian proteins are used to test each lysate.

The MEG-01 cell line was derived in 1983 at the Nagoya University School of Medicine, Nagoya, Japan from bone marrow cells taken from a patient in megakaryoblastic crisis of CML. MEG-01 cells are positive for cytoplasmic Factor VIII and surface GPIIb/IIIa, periodic acid-Schiff (PAS) reaction, α naphthyl acetate esterase and acid phosphatase. They are negative for myeloperoxidase, α naphthyl butyrate esterase, naphthol AS-D chloroacetate esterase and alkaline phosphatase. MEG-01 stain positively with monoclonal antibodies BA-1 (anti B cell, granulocyte), HPL-3 (anti GPIIb/IIIa) and 20.3 (anti monocyte, platelet). They are negative for other lymphoid and myeloid seris antigens.

REFERENCES

- Ogura, M., Morishima, Y., Ohno, R., Kato, Y., Hirabayashi, N., Nagura, H. and Saito, H. 1985. Establishment of a novel human megakaryoblastic leukemia cell line, MEG-01, with positive Philadelphia chromosome. *Blood* 66: 1384-1392.

SOURCE

MEG-01 Whole Cell Lysate is derived from the MEG-01 cell line.

Organism: *Homo sapiens* (human)
 Disease: Chronic myelogenous leukemia (CML)
 Cell Type: Megakaryoblast
 Morphology: Lymphoblast
 Growth Properties: Adherent and suspension

PRODUCT

Each vial contains 500 μ g protein in 200 μ l of an SDS-PAGE Western Blotting buffer, which consists of 100 μ l RIPA Lysis Buffer and 100 μ l Electrophoresis Buffer, 2X.

APPLICATIONS

MEG-01 Whole Cell Lysate is provided as a Western Blotting positive control. Recommended use is 50 μ g (20 μ l) per lane. Sample vial should be boiled once prior to use.

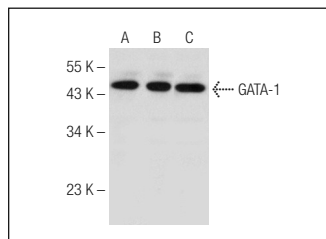
PREPARATION METHOD

Cells are cultured with appropriate media conditions and allowed to reach a confluency of 75%. Cells are lysed using the RIPA Lysis Buffer System (sc-24948). The BCA Protein Assay Kit (sc-202389) is used to determine the total protein concentration. The lysate is adjusted to contain 500 μ g of total cellular protein in 100 μ l before adding an equal volume of Electrophoresis Sample Buffer, 2X (sc-24945). Final concentration of product is 500 μ g total protein in a final volume of 200 μ l.

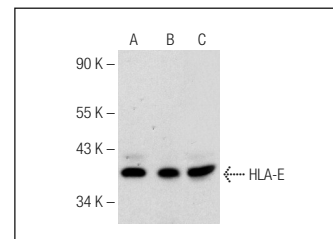
STORAGE

Store at -20° C; stable for one year from the date of shipment. Non-hazardous. No MSDS required. Minimize repeated freezing and thawing.

DATA



GATA-1 (N1): sc-266. Western blot analysis of GATA-1 expression in HEL 92.1.7 (A), MEG-01 (B) and TF-1 (C) whole cell lysates.



HLA-E (S-17): sc-54608. Western blot analysis of HLA-E expression in BJAB (A), K-562 (B) MEG-01 (C) whole cell lysates.

RESEARCH USE

For research use only, not for use in diagnostic procedures.

PROTOCOLS

See our web site at www.scbt.com or our catalog for detailed protocols and support products.