



# SZABO SCANDIC

Part of Europa Biosite

## Produktinformation



Forschungsprodukte & Biochemikalien



Zellkultur & Verbrauchsmaterial



Diagnostik & molekulare Diagnostik



Laborgeräte & Service

Weitere Information auf den folgenden Seiten!  
See the following pages for more information!



### Lieferung & Zahlungsart

siehe unsere [Liefer- und Versandbedingungen](#)

### Zuschläge

- Mindermengenzuschlag
- Trockeneiszuschlag
- Gefahrgutzuschlag
- Expressversand

### SZABO-SCANDIC HandelsgmbH

Quellenstraße 110, A-1100 Wien

T. +43(0)1 489 3961-0

F. +43(0)1 489 3961-7

[mail@szabo-scandic.com](mailto:mail@szabo-scandic.com)

[www.szabo-scandic.com](http://www.szabo-scandic.com)

[linkedin.com/company/szaboscandic](https://www.linkedin.com/company/szaboscandic) 

# T24 Cell Lysate: sc-2292

## BACKGROUND

Santa Cruz Biotechnology offers a variety of whole cell lysates for use in combination with our antibodies as Western Blotting controls. T24 Whole Cell Lysate is derived from the T24 cell line using a procedure that ensures protein integrity and lot-to-lot reproducibility. All lysates are tested by Western Blotting to assure that each one contains the expected concentration and assortment of proteins. Numerous antibodies directed against a wide array of mammalian proteins are used to test each lysate.

The T24 cell line was established from an 81 year old female Caucasian. Cells contain the Ras (H-Ras) oncogene. Cellular products include tumor specific antigen.

## REFERENCES

- O'Toole, C., Perlmann, P., Unsgaard, B., Moberger, G. and Edsmyr, F. 1972. Cellular immunity to human urinary bladder carcinoma. I. Correlation to clinical stage and radiotherapy. *Int. J. Cancer* 10: 77-91.
- O'Toole, C. 1986. Human bladder cancer lines: HLA Class I and Class II antigen expression and susceptibility to cytostatic and cytotoxic effects *in vitro*. In Webber, M.M. and Sekely, L.I., eds., *In Vitro Models for Cancer Research*, Vol. IV. Boca Raton, FL: CRC Press, 103-125.
- Williams, B.Y. and Schonbrunn, A. 1994. Bombesin receptors in a human duodenal tumor cell line: binding properties and function. *Cancer Res.* 54: 818-824.

## SOURCE

T24 Whole Cell Lysate is derived from the T24 cell line.

Organism: *Homo sapiens* (human)  
 Organ: Urinary bladder  
 Disease: Transitional cell carcinoma  
 Growth Properties: Adherent

## PRODUCT

Each vial contains 500 µg protein in 200 µl of an SDS-PAGE Western Blotting buffer, which consists of 100 µl RIPA Lysis Buffer and 100 µl Electrophoresis Buffer, 2X.

## APPLICATIONS

T24 Whole Cell Lysate is provided as a Western Blotting positive control. Recommended use is 50 µg (20 µl) per lane. Sample vial should be boiled once prior to use.

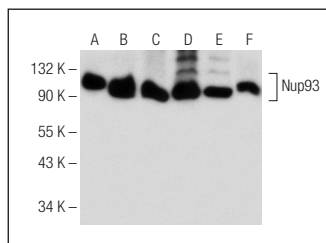
## PREPARATION METHOD

Cells are cultured with appropriate media conditions and allowed to reach a confluency of 75%. Cells are lysed using the RIPA Lysis Buffer System (sc-24948). The BCA Protein Assay Kit (sc-202389) is used to determine the total protein concentration. The lysate is adjusted to contain 500 µg of total cellular protein in 100 µl before adding an equal volume of Electrophoresis Sample Buffer, 2X (sc-24945). Final concentration of product is 500 µg total protein in a final volume of 200 µl.

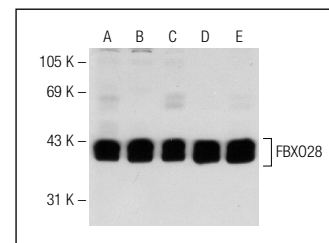
## STORAGE

Store at -20° C; stable for one year from the date of shipment. Non-hazardous. No MSDS required. Minimize repeated freezing and thawing.

## DATA



Nup93 (F-2): sc-374400. Western blot analysis of Nup93 expression in 293T (A), T24 (B), HeLa (C), K-562 (D), LADMAC (E) and MTE1D (F) whole cell lysates.



FBXO28 (H-300): sc-134723. Western blot analysis of FBXO28 expression in T24 (A), Jurkat (B), COLO 320DM (C), SK-N-MC (D) and HeLa (E) whole cell lysates.

## RESEARCH USE

For research use only, not for use in diagnostic procedures.

## PROTOCOLS

See our web site at [www.scbt.com](http://www.scbt.com) or our catalog for detailed protocols and support products.