



SZABO SCANDIC

Part of Europa Biosite

Produktinformation



Forschungsprodukte & Biochemikalien



Zellkultur & Verbrauchsmaterial



Diagnostik & molekulare Diagnostik



Laborgeräte & Service

Weitere Information auf den folgenden Seiten!
See the following pages for more information!



Lieferung & Zahlungsart

siehe unsere [Liefer- und Versandbedingungen](#)

Zuschläge

- Mindermengenzuschlag
- Trockeneiszuschlag
- Gefahrgutzuschlag
- Expressversand

SZABO-SCANDIC HandelsgmbH

Quellenstraße 110, A-1100 Wien

T. +43(0)1 489 3961-0

F. +43(0)1 489 3961-7

mail@szabo-scandic.com

www.szabo-scandic.com

[linkedin.com/company/szaboscandic](https://www.linkedin.com/company/szaboscandic)

T-47D Cell Lysate: sc-2293

BACKGROUND

Santa Cruz Biotechnology offers a variety of whole cell lysates for use in combination with our antibodies as Western Blotting controls. T-47D Cell Lysate is derived from the T-47D cell line using a procedure that ensures protein integrity and lot-to-lot reproducibility. All lysates are tested by Western Blotting to assure that each one contains the expected concentration and assortment of proteins. Numerous antibodies directed against a wide array of mammalian proteins are used to test each lysate.

The T-47 line was isolated by I. Keydar from a pleural effusion obtained from a 54 year old female patient with an infiltrating ductal carcinoma of the breast. This differentiated epithelial substrain (T-47D) was found to contain cytoplasmic junctions and receptors to 17- β Estradiol, other steroids and calcitonin. T-47D cells express the WNT7B oncogene.

REFERENCES

1. Keydar, I., Chen, L., Karby, S., Weiss, F.R., Delarea, J., Radu, M., Chaitcik, S. and Brenner, H.J. 1979. Establishment and characterization of a cell line of human breast carcinoma origin. *Eur. J. Cancer* 15: 659-670.
2. Freake, H.C., Marcocci, C., Iwasaki, J. and MacIntyre, I. 1981. 1,25-dihydroxyvitamin D3 specifically binds to a human breast cancer cell line (T47D) and stimulates growth. *Biochem. Biophys. Res. Commun.* 101: 1131-1138.
3. Sher, E., Eisman, J.A., Moseley, J.M. and Martin, T.J. 1981. Whole-cell uptake and nuclear localization of 1,25-dihydroxycholecalciferol by breast cancer cells (T47 D) in culture. *Biochem. J.* 200: 315-320.
4. Lamp, S.J., Findlay, D.M., Moseley, J.M. and Martin, T.J. 1981. Calcitonin induction of a persistent activated state of adenylate cyclase in human breast cancer cells (T 47D). *J. Biol. Chem.* 256: 12269-12274.
5. Judge, S.M. and Chatterton, R.T. 1983. Progesterone-specific stimulation of triglyceride biosynthesis in a breast cancer cell line (T-47D). *Cancer Res.* 43: 4407-4412.
6. Faust, J.B. and Meeker, T.C. 1992. Amplification and expression of the bcl-1 gene in human solid tumor cell lines. *Cancer Res.* 52: 2460-2463.
7. Huguet, E.L., McMahon, J.A., McMahon, A.P., Bicknell, R. and Harris, A.L. 1994. Differential expression of human Wnt genes 2, 3, 4, and 7B in human breast cell lines and normal and disease states of human breast tissue. *Cancer Res.* 54: 2615-2621.
8. Burfeind, P., Chernicky, C.L., Rininsland, F., Ilan, J. and Ilan, J. 1996. Anti-sense RNA to the type I Insulin-like growth factor receptor suppresses tumor growth and prevents invasion by rat prostate cancer cells *in vivo*. *Proc. Natl. Acad. Sci. USA* 93: 7263-7268.
9. Bellet, D., Lazar, V., Bièche, I., Paradis, V., Giovangrandi, Y., Paterlini, P., Lidereau, R., Bedossa, P., Bidart, J.M. and Vidaud, M. 1997. Malignant transformation of nontrophoblastic cells is associated with the expression of chorionic gonadotropin β genes normally transcribed in trophoblastic cells. *Cancer Res.* 57: 516-523.

RESEARCH USE

For research use only, not for use in diagnostic procedures.

SOURCE

T-47D Cell Lysate was derived from the T-47D cell line.

Organism:	<i>Homo sapiens</i> (human)
Organ:	Mammary gland; breast
Tissue:	Duct
Disease:	Ductal carcinoma
Derived from metastatic site:	Pleural effusion
Growth Properties:	Adherent

PRODUCT

Each vial contains 500 μ g protein in 200 μ l of an SDS-PAGE Western Blotting buffer, which consists of 100 μ l RIPA Lysis Buffer and 100 μ l Electrophoresis Buffer, 2X.

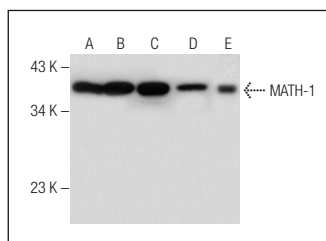
APPLICATIONS

T-47D Cell Lysate is provided as a Western Blotting positive control. Recommended use is 50 μ g (20 μ l) per lane. Sample vial should be boiled once prior to use.

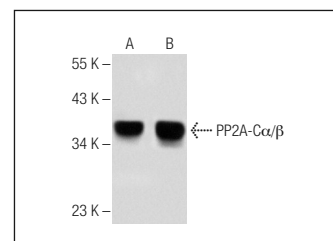
PREPARATION METHOD

Cells are cultured with appropriate media conditions and allowed to reach a confluency of 75%. Cells are lysed using the RIPA Lysis Buffer System (sc-24948). The BCA Protein Assay Kit (sc-202389) is used to determine the total protein concentration. The lysate is adjusted to contain 500 μ g of total cellular protein in 100 μ l before adding an equal volume of Electrophoresis Sample Buffer, 2X (sc-24945). Final concentration of product is 500 μ g total protein in a final volume of 200 μ l.

DATA



MATH-1 (18A6): sc-136173. Western blot analysis of MATH-1 expression in T-47D (A), PC-12 (B), Jurkat (C) and NIH/3T3 (D) whole cell lysates and human adrenal gland tissue extract (E).



PP2A-C α / β (D-3): sc-376824. Western blot analysis of PP2A-C α / β expression in MCF7 (A) and T-47D (B) whole cell lysates.

STORAGE

Store at -20 $^{\circ}$ C; stable for one year from the date of shipment. Non-hazardous. No MSDS required. Minimize repeated freezing and thawing.

PROTOCOLS

See our web site at www.scbt.com or our catalog for detailed protocols and support products.