



SZABO SCANDIC

Part of Europa Biosite

Produktinformation



Forschungsprodukte & Biochemikalien



Zellkultur & Verbrauchsmaterial



Diagnostik & molekulare Diagnostik



Laborgeräte & Service

Weitere Information auf den folgenden Seiten!
See the following pages for more information!



Lieferung & Zahlungsart

siehe unsere [Liefer- und Versandbedingungen](#)

Zuschläge

- Mindermengenzuschlag
- Trockeneiszuschlag
- Gefahrgutzuschlag
- Expressversand

SZABO-SCANDIC HandelsgmbH

Quellenstraße 110, A-1100 Wien

T. +43(0)1 489 3961-0

F. +43(0)1 489 3961-7

mail@szabo-scandic.com

www.szabo-scandic.com

[linkedin.com/company/szaboscandic](https://www.linkedin.com/company/szaboscandic) 

T98G Whole Cell Lysate: sc-2294

BACKGROUND

Santa Cruz Biotechnology offers a variety of whole cell lysates for use in combination with our antibodies as Western Blotting controls. T98G Whole Cell Lysate is derived from the T98G cell line using a procedure that ensures protein integrity and lot-to-lot reproducibility. All lysates are tested by Western Blotting to assure that each one contains the expected concentration and assortment of proteins. Numerous antibodies directed against a wide array of mammalian proteins are used to test each lysate. When deprived of serum or when crowded, T98G cells enter a viable G₁ arrested state. T98G cells are anchorage independent.

REFERENCES

- Stein, G.H. 1979. T98G: an anchorage-independent human tumor cell line that exhibits stationary phase G₁ arrest *in vitro*. *J. Cell. Physiol.* 99: 43-54.
- Olopade, O.I., Jenkins, R.B., Ransom, D.T., Malik, K., Pomykala, H., Nobori, T., Cowan, J.M., Rowley, J.D. and Diaz, M.O. 1992. Molecular analysis of deletions of the short arm of chromosome 9 in human gliomas. *Cancer Res.* 52: 2523-2529.
- Rostomily, R.C., Bermingham-McDonogh, O., Berger, M.S., Tapscott, S.J., Reh, T.A. and Olson, J.M. 1997. Expression of neurogenic basic helix-loop-helix genes in primitive neuroectodermal tumors. *Cancer Res.* 57: 3526-3531.

SOURCE

T98G Whole Cell Lysate is derived from the T98G cell line.

Organism: *Homo sapiens* (human)
Tissue: Brain
Disease: Glioblastoma multiforme
Cell Type: Fibroblast
Growth Properties: Adherent

PRODUCT

Each vial contains 500 µg protein in 200 µl of an SDS-PAGE Western Blotting buffer, which consists of 100 µl RIPA Lysis Buffer and 100 µl Electrophoresis Buffer, 2X.

APPLICATIONS

T98G Whole Cell Lysate is provided as a Western Blotting positive control. Recommended use is 50 µg (20 µl) per lane. Sample vial should be boiled once prior to use.

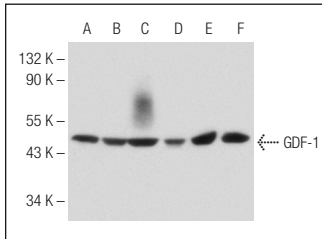
PREPARATION METHOD

Cells are cultured with appropriate media conditions and allowed to reach a confluency of 75%. Cells are lysed using the RIPA Lysis Buffer System (sc-24948). The BCA Protein Assay Kit (sc-202389) is used to determine the total protein concentration. The lysate is adjusted to contain 500 µg of total cellular protein in 100 µl before adding an equal volume of Electrophoresis Sample Buffer, 2X (sc-24945). Final concentration of product is 500 µg total protein in a final volume of 200 µl.

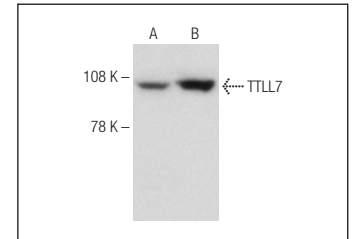
STORAGE

Store at -20° C; stable for one year from the date of shipment. Non-hazardous. No MSDS required. Minimize repeated freezing and thawing.

DATA



GDF-1 (G-17): sc-27411. Western blot analysis of GDF-1 expression in Hep G2 (A), A-375 (B), HL-60 (C), BE (2)-M17 (D), T98G (E) and SK-N-MC (F) whole cell lysates.



TTL7 (V-14): sc-163494. Western blot analysis of TTL7 expression in T98G (A) and DU 145 (B) whole cell lysates.

SELECT PRODUCT CITATIONS

- Park, K.H., Gad, E., Goodell, V., Dang, Y., Wild, T., Higgins, D., Fintak, P., Childs, J., Dela Rosa, C. and Disis, M.L. 2008. Insulin-like growth factor-binding protein-2 is a target for the immunomodulation of breast cancer. *Cancer Res.* 68: 8400-8409.

RESEARCH USE

For research use only, not for use in diagnostic procedures.

PROTOCOLS

See our web site at www.scbt.com or our catalog for detailed protocols and support products.