



# SZABO SCANDIC

Part of Europa Biosite

## Produktinformation



Forschungsprodukte & Biochemikalien



Zellkultur & Verbrauchsmaterial



Diagnostik & molekulare Diagnostik



Laborgeräte & Service

Weitere Information auf den folgenden Seiten!  
See the following pages for more information!



### Lieferung & Zahlungsart

siehe unsere [Liefer- und Versandbedingungen](#)

### Zuschläge

- Mindermengenzuschlag
- Trockeneiszuschlag
- Gefahrgutzuschlag
- Expressversand

### SZABO-SCANDIC HandelsgmbH

Quellenstraße 110, A-1100 Wien

T. +43(0)1 489 3961-0

F. +43(0)1 489 3961-7

[mail@szabo-scandic.com](mailto:mail@szabo-scandic.com)

[www.szabo-scandic.com](http://www.szabo-scandic.com)

[linkedin.com/company/szaboscandic](https://www.linkedin.com/company/szaboscandic) 

# mouse cerebellum extract: sc-2403

## BACKGROUND

Santa Cruz Biotechnology, Inc. offers a range of mammalian organ tissue protein extracts for use in combination with research antibodies as Western blotting controls. Human (*Homo sapiens*), mouse (*Mus musculus*), and rat (*Rattus norvegicus*) whole tissue extracts are derived from normal, healthy, and non-diseased tissue specimens. Mouse and rat animals are maintained under controlled conditions, and determined in good health by DVM. Human cadaver tissue via patient consent, are with infectious disease and serological testing. Whole tissue extraction preparation methodology (RIPA Lysis Buffer System (sc-24948)) ensures both protein integrity, and lot-to-lot reproducibility. Tissue extracts are tested by western blotting in order to ensure, that each preparation contains a consistent concentration and assortment of proteins.

## PRODUCT

Each vial contains 500 µg protein in 200 µl of an SDS-PAGE Western Blotting buffer, which consists of 100 µl RIPA Lysis Buffer (sc-24948) and 100 µl Electrophoresis Sample Buffer, 2X (sc-24945).

## APPLICATIONS

mouse cerebellum extract is provided as a Western Blotting positive control. Recommended use is 50 µg (20 µl) per lane. Tissue extract vial should be placed at 95° C for 3- 5 minutes once prior to use.

## PREPARATION METHOD

Frozen tissues are reduced to a granular powder using a mechanical tissue grinder. Tissues are then suspended in a lysis solution (RIPA Lysis Buffer System (sc-24948)), and undergo sonication. Insoluble cellular debris removal is performed by centrifugation. The tissue extraction is adjusted to contain 500 µg of total cellular protein in 100 µl before adding an equal 100 µl volume of Electrophoresis Sample Buffer, 2X (sc-24945). Final concentration of product is 500 µg total protein in a final volume of 200 µl.

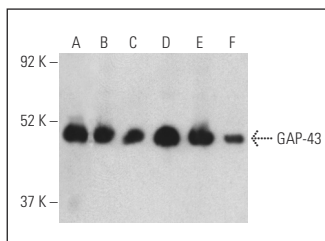
## STORAGE

Store at -20° C, avoid repeated freeze/thaw cycles. Stable for one year from the date of shipment. Non-hazardous. No MSDS required.

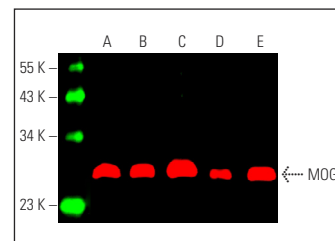
## RESEARCH USE

For research use only, not for use in diagnostic procedures.

## DATA



GAP-43 (7B10): sc-33705. Western blot analysis of GAP-43 expression in human brain (A), mouse cerebellum (B), mouse spinal cord (C), rat brain (D), rat cerebellum (E) and rat spinal cord (F) tissue extracts. Detection reagent used: m-IgG Fc BP-HRP: sc-525409.



MOG (D-2) Alexa Fluor<sup>®</sup> 790: sc-376138 AF790. Direct near-infrared western blot analysis of MOG expression in mouse brain (A), rat brain (B), human brain (C), rat cerebellum (D) and mouse cerebellum (E) tissue extracts. Blocked with UltraCruz<sup>®</sup> Blocking Reagent: sc-516214. Cruz Marker<sup>™</sup> Molecular Weight Standards detected with Cruz Marker<sup>™</sup> MW Tag-Alexa Fluor<sup>®</sup> 680: sc-516730.

## SELECT PRODUCT CITATIONS

- Jarius, S., et al. 2022. Rho GTPase-activating protein 10 (ARHGAP10/GRAF2) is a novel autoantibody target in patients with autoimmune encephalitis. *J. Neurol.* 269: 5420-5430.

## PROTOCOLS

See our web site at [www.scbt.com](http://www.scbt.com) or our catalog for detailed protocols and support products.