



# SZABO SCANDIC

Part of Europa Biosite

## Produktinformation



Forschungsprodukte & Biochemikalien



Zellkultur & Verbrauchsmaterial



Diagnostik & molekulare Diagnostik



Laborgeräte & Service

Weitere Information auf den folgenden Seiten!  
See the following pages for more information!



### Lieferung & Zahlungsart

siehe unsere [Liefer- und Versandbedingungen](#)

### Zuschläge

- Mindermengenzuschlag
- Trockeneiszuschlag
- Gefahrgutzuschlag
- Expressversand

### SZABO-SCANDIC HandelsgmbH

Quellenstraße 110, A-1100 Wien

T. +43(0)1 489 3961-0

F. +43(0)1 489 3961-7

[mail@szabo-scandic.com](mailto:mail@szabo-scandic.com)

[www.szabo-scandic.com](http://www.szabo-scandic.com)

[linkedin.com/company/szaboscandic](https://www.linkedin.com/company/szaboscandic) 

# Daudi Whole Cell Lysate: sc-2415

## BACKGROUND

Santa Cruz Biotechnology offers a variety of whole cell lysates for use in combination with our antibodies as Western Blotting controls. Daudi Whole Cell Lysate is derived from the Daudi cell line using a procedure that ensures protein integrity and lot-to-lot reproducibility. All lysates are tested by Western Blotting to assure that each one contains the expected concentration and assortment of proteins. Numerous antibodies directed against a wide array of mammalian proteins are used to test each lysate.

The Daudi cell line was derived from a 16 year old Black male with Burkitt's lymphoma by E. Klein and G. Klein in May 1967. The cells are negative for  $\beta$ -2-microglobulin. They are positive for EBNA, VCA and surface immunoglobulin (Ig<sup>+</sup>) and the line carries Epstein-Barr virus. Daudi is a well characterized B lymphoblast cell line which has been employed extensively in studies of mechanisms of leukemogenesis.

## REFERENCES

1. Klein, E., Klein, G., Nadkarni, J.S., Nadkarni, J.J., Wigzell, H. and Clifford, P. 1968. Surface IgM- $\kappa$  specificity on a Burkitt lymphoma cell *in vivo* and in derived culture lines. *Cancer Res.* 28: 1300-1310.
2. Huber, C., Sundström, C., Nilsson, K. and Wigzell, H. 1976. Surface receptors on human haematopoietic cell lines. *Clin. Exp. Immunol.* 25: 367-376.
3. Ohsugi, Y., Gershwin, M.E., Owens, R.B. and Nelson-Rees, W.A. 1980. Tumorigenicity of human malignant lymphoblasts: comparative study with unmanipulated nude mice, antilymphocyte serum-treated nude mice, and X-irradiated nude mice. *J. Natl. Cancer Inst.* 65: 715-718.

## SOURCE

Daudi Whole Cell Lysate is derived from the Daudi cell line.

Organism: *Homo sapiens* (human)  
 Tissue: Peripheral blood  
 Disease: Burkitt's lymphoma  
 Cell Type: B lymphoblast  
 Growth Properties: Suspension

## PRODUCT

Each vial contains 500  $\mu$ g protein in 200  $\mu$ l of an SDS-PAGE Western Blotting buffer, which consists of 100  $\mu$ l RIPA Lysis Buffer and 100  $\mu$ l Electrophoresis Buffer, 2X.

## APPLICATIONS

Daudi Whole Cell Lysate is provided as a Western Blotting positive control. Recommended use is 50  $\mu$ g (20  $\mu$ l) per lane. Sample vial should be boiled once prior to use.

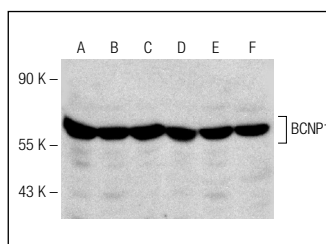
## STORAGE

Store at -20° C; stable for one year from the date of shipment. Non-hazardous. No MSDS required. Minimize repeated freezing and thawing.

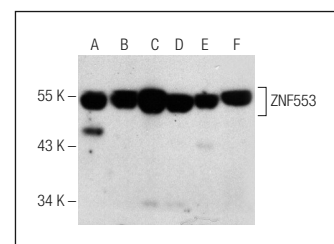
## PREPARATION METHOD

Cells are cultured with appropriate media conditions and allowed to reach a confluency of 75%. Cells are lysed using the RIPA Lysis Buffer System (sc-24948). The BCA Protein Assay Kit (sc-202389) is used to determine the total protein concentration. The lysate is adjusted to contain 500  $\mu$ g of total cellular protein in 100  $\mu$ l before adding an equal volume of Electrophoresis Sample Buffer, 2X (sc-24945). Final concentration of product is 500  $\mu$ g total protein in a final volume of 200  $\mu$ l.

## DATA



BCNP1 (N-17): sc-130092. Western blot analysis of BCNP1 expression in BJAB (A), Jurkat (B), Raji (C), Daudi (D), HEL 92.1.7 (E) and K-562 (F) whole cell lysates.



ZNF553 (P-17): sc-249644. Western blot analysis of ZNF553 expression in Daudi whole cell lysate (A) and K-562 (B), MCF7 (C), HeLa (D) and Hep G2 (E) nuclear extracts and human liver tissue extract (F).

## RESEARCH USE

For research use only, not for use in diagnostic procedures.

## PROTOCOLS

See our web site at [www.scbt.com](http://www.scbt.com) or our catalog for detailed protocols and support products.