



# SZABO SCANDIC

Part of Europa Biosite

## Produktinformation



Forschungsprodukte & Biochemikalien



Zellkultur & Verbrauchsmaterial



Diagnostik & molekulare Diagnostik



Laborgeräte & Service

Weitere Information auf den folgenden Seiten!  
See the following pages for more information!



### Lieferung & Zahlungsart

siehe unsere [Liefer- und Versandbedingungen](#)

### Zuschläge

- Mindermengenzuschlag
- Trockeneiszuschlag
- Gefahrgutzuschlag
- Expressversand

### SZABO-SCANDIC HandelsgmbH

Quellenstraße 110, A-1100 Wien

T. +43(0)1 489 3961-0

F. +43(0)1 489 3961-7

[mail@szabo-scandic.com](mailto:mail@szabo-scandic.com)

[www.szabo-scandic.com](http://www.szabo-scandic.com)

[linkedin.com/company/szaboscandic](https://www.linkedin.com/company/szaboscandic) 

# ES-2 Cell Lysate: sc-24674

## BACKGROUND

Santa Cruz Biotechnology offers a variety of whole cell lysates for use in combination with our antibodies as Western Blotting controls. ES-2 Whole Cell Lysate is derived from the ES-2 cell line using a procedure that ensures protein integrity and lot-to-lot reproducibility. All lysates are tested by Western Blotting to assure that each one contains the expected concentration and assortment of proteins. Numerous antibodies directed against a wide array of mammalian proteins are used to test each lysate.

The ES-2 cell line was established from a surgical tumor specimen taken from a 47 year old black woman. The tumor was described as a poorly differentiated ovarian clear cell carcinoma. Initially, the cells were grown in soft agar. The cells exhibit low to moderate resistance to a number of chemotherapeutic agents including doxorubicin, cisplatin, carmustine, etoposide and cyanomorpholinodoxorubicin (MRA-CN). ES-2 cells express low levels of P glycoprotein.

## REFERENCES

1. Lau, D.H., Lewis, A.D., Ehsan, M.N. and Sikic, B.I. 1991. Multifactorial mechanisms associated with broad cross-resistance of ovarian carcinoma cells selected by cyanomorpholino doxorubicin. *Cancer Res.* 51: 5181-5187.

## SOURCE

ES-2 Whole Cell Lysate is derived from the ES-2 cell line.

Organism: *Homo sapiens* (human)  
 Organ: Ovary  
 Disease: Clear cell carcinoma  
 Growth Properties: Adherent fibroblast

## PRODUCT

Each vial contains 500 µg protein in 200 µl of an SDS-PAGE Western Blotting buffer, which consists of 100 µl RIPA Lysis Buffer and 100 µl Electrophoresis Buffer, 2X.

## APPLICATIONS

ES-2 Whole Cell Lysate is provided as a Western Blotting positive control. Recommended use is 50 µg (20 µl) per lane. Sample vial should be boiled once prior to use.

## PREPARATION METHOD

Cells are cultured with appropriate media conditions and allowed to reach a confluency of 75%. Cells are lysed using the RIPA Lysis Buffer System (sc-24948). The BCA Protein Assay Kit (sc-202389) is used to determine the total protein concentration. The lysate is adjusted to contain 500 µg of total cellular protein in 100 µl before adding an equal volume of Electrophoresis Sample Buffer, 2X (sc-24945). Final concentration of product is 500 µg total protein in a final volume of 200 µl.

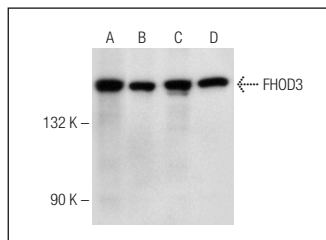
## STORAGE

Store at -20° C; stable for one year from the date of shipment. Non-hazardous. No MSDS required. Minimize repeated freezing and thawing.

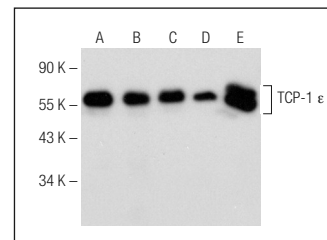
## RESEARCH USE

For research use only, not for use in diagnostic procedures.

## DATA



FHOD3 (G-5): sc-374601. Western blot analysis of FHOD3 expression in Jurkat (A) and ES-2 (B) whole cell lysates and human kidney (C) and human heart (D) tissue extracts.



TCP-1 ε (D-6): sc-374554. Western blot analysis of TCP-1 ε expression in HeLa (A), ES-2 (B), Caki-1 (C) and F9 (D) whole cell lysates and rat testis tissue extract (E).

## PROTOCOLS

See our web site at [www.scbt.com](http://www.scbt.com) or our catalog for detailed protocols and support products.