



SZABO SCANDIC

Part of Europa Biosite

Produktinformation



Forschungsprodukte & Biochemikalien



Zellkultur & Verbrauchsmaterial



Diagnostik & molekulare Diagnostik



Laborgeräte & Service

Weitere Information auf den folgenden Seiten!
See the following pages for more information!



Lieferung & Zahlungsart

siehe unsere [Liefer- und Versandbedingungen](#)

Zuschläge

- Mindermengenzuschlag
- Trockeneiszuschlag
- Gefahrgutzuschlag
- Expressversand

SZABO-SCANDIC HandelsgmbH

Quellenstraße 110, A-1100 Wien

T. +43(0)1 489 3961-0

F. +43(0)1 489 3961-7

mail@szabo-scandic.com

www.szabo-scandic.com

[linkedin.com/company/szaboscandic](https://www.linkedin.com/company/szaboscandic) 

normal mouse IgG₁ PE: sc-2866

BACKGROUND

Santa Cruz Biotechnology offers a wide variety of control immunoglobulin and control sera for a large selection of species, including mouse, rabbit, goat, chicken, rat, hamster, canine, guinea pig and sheep. Control immunoglobulin and immunoglobulin conjugates are useful negative controls. Normal sera is offered to be used as blocking reagents. Santa Cruz Biotechnology offers affinity purified normal immunoglobulins and immunoglobulin conjugates for use as negative controls in applications including flow cytometry, immunohistochemistry, immunofluorescence, Western Blotting and immunoprecipitation. Agarose (AC) conjugated IgGs are provided for immunoprecipitation; horseradish peroxidase (HRP) conjugates are provided for Western Blotting and immunohistochemistry; and Biotin (B) conjugates are provided for immunohistochemistry. A broad range of fluorescent conjugated controls are also available for use in flow cytometry and immunofluorescence applications. Most control immunoglobulins are available as unconjugated controls or as FITC (fluorescein isothiocyanate), PE (phycoerythrin), PE-Cy5 (phycoerythrin-Cy5), PE-Cy7 (phycoerythrin-Cy7), APC (allophycocyanin) and APC-Cy7 (allophycocyanin-Cy7) conjugates. Additional conjugates include Alexa Fluor[®] 488, Alexa Fluor[®] 647, Alexa Fluor[®] 405, PerCP (peridinin chlorophyll protein complex) and PerCP-Cy5.5 (peridinin chlorophyll protein complex-Cy 5.5). Isotype specific control immunoglobulins include classes such as mouse IgG₁, IgG_{2a}, IgG_{2b}, IgG₃, IgM and IgA, rat IgG₁, IgG_{2a}, IgG_{2b} and IgM, Armenian hamster IgG, and both goat and rabbit IgG.

SOURCE

normal mouse IgG₁ PE is an affinity purified, PE (phycoerythrin) conjugated isotype control immunoglobulin from mouse.

PRODUCT

Each vial contains 200 µg mouse IgG₁ in 1.0 ml PBS containing 1% stabilizer protein and 0.02% sodium azide.

APPLICATIONS

normal mouse IgG₁ PE is recommended for use as an isotype control immunoglobulin in place of a target specific primary antibody of the same isotype (mouse IgG₁) by immunofluorescence, immunohistochemical staining (including paraffin-embedded sections) and flow cytometry. To be used at an assay dependent dilution.

STORAGE

Store at 4° C, ****DO NOT FREEZE****. Stable for one year from the date of shipment. Non-hazardous. No MSDS required.

RESEARCH USE

For research use only, not for use in diagnostic procedures.

PROTOCOLS

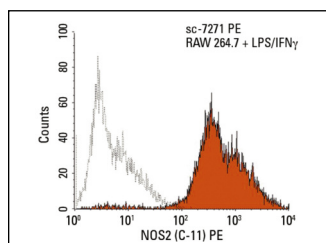
See our web site at www.scbt.com for detailed protocols and support products.

Alexa Fluor[®] is a trademark of Molecular Probes, Inc., Oregon, USA

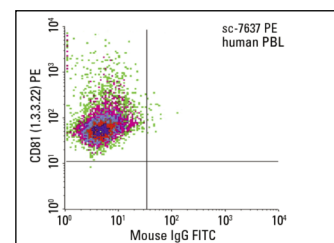
RECOMMENDED SUPPORT PRODUCTS

- CrystalCruz[™] Cover Glasses, 22 x 50 mm: sc-24975
- PBS, powder: sc-24947
- Formaldehyde: sc-203049
- Hydrogen Peroxide: sc-203336
- Organo/Limonene Mount: sc-45087
- UltraCruz[®] Mounting Medium: sc-24941
- ImmunoHistoMount: sc-45086
- Immuno In Situ Mount: sc-45088
- Xylenes: sc-237422
- Hematoxylin: sc-24973
- FCM Lysing solution: sc-3621
- FCM Fixation Buffer: sc-3622
- FCM Permeabilization Buffer: sc-3623
- FCM Wash Buffer: sc-3624
- Intracellular FCM System: sc-45063

DATA



NOS2 (C-11) PE: sc-7271 PE. Intracellular FCM analysis of methanol permeabilized RAW 264.7 + LPS/IFN γ cells. Solid black line histogram represents the isotype control, normal mouse IgG₁: sc-2866.



CD81 (1.3.3.22) PE: sc-7637 PE. FCM analysis of human peripheral blood leukocytes. Quadrant markers were set based on the isotype control, normal mouse IgG₁: sc-2866.

SELECT PRODUCT CITATIONS

- Proto-Siqueira, R., et al. 2006. PRAME is a membrane and cytoplasmic protein aberrantly expressed in chronic lymphocytic leukemia and mantle cell lymphoma. *Leuk. Res.* 30: 1333-1339.
- Fessler, SP., et al. 2009. MUC1* is a determinant of trastuzumab (Herceptin) resistance in breast cancer cells. *Breast Cancer Res. Treat.* 118: 113-124.
- Coward, J., et al. 2011. Interleukin-6 as a therapeutic target in human ovarian cancer. *Clin. Cancer Res.* 17: 6083-6096.
- Langer, M., et al. 2012. *Bacillus anthracis* lethal toxin reduces human alveolar epithelial barrier function. *Infect. Immun.* 80: 4374-4387.
- Wu, Y., et al. 2015. Exosomes: improved methods to characterize their morphology, RNA content, and surface protein biomarkers. *Analyst* 140: 6631-6642.
- Zhan, R., et al. 2016. Nitric oxide promotes epidermal stem cell migration via cGMP-Rho GTPase signalling. *Sci Rep.* 6: 30687.