



SZABO SCANDIC

Part of Europa Biosite

Produktinformation



Forschungsprodukte & Biochemikalien



Zellkultur & Verbrauchsmaterial



Diagnostik & molekulare Diagnostik



Laborgeräte & Service

Weitere Information auf den folgenden Seiten!
See the following pages for more information!



Lieferung & Zahlungsart

siehe unsere [Liefer- und Versandbedingungen](#)

Zuschläge

- Mindermengenzuschlag
- Trockeneiszuschlag
- Gefahrgutzuschlag
- Expressversand

SZABO-SCANDIC HandelsgmbH

Quellenstraße 110, A-1100 Wien

T. +43(0)1 489 3961-0

F. +43(0)1 489 3961-7

mail@szabo-scandic.com

www.szabo-scandic.com

[linkedin.com/company/szaboscandic](https://www.linkedin.com/company/szaboscandic) 

human liver extract: sc-363766

BACKGROUND

Santa Cruz Biotechnology Inc. offers whole tissue extracts for use in combination with research antibodies as western blotting controls. Human liver tissue extract is derived from normal, healthy human liver tissue using a preparation method (RIPA Lysis Buffer System (sc-24948)), that ensures protein integrity and lot-to-lot reproducibility. Tissue extracts are tested by western blotting in order to ensure each preparation contains a consistent concentration, and assortment of proteins.

REFERENCES

1. He, F. 2005. Human liver proteome project: plan, progress, and perspectives. *Mol. Cell. Proteomics* 4: 1841-1848.
2. Kampf, C., et al. 2014. The human liver-specific proteome defined by transcriptomics and antibody-based profiling. *FASEB J.* 28: 2901-2914.
3. Yu, H., et al. 2016. Mapping and analyzing the human liver proteome: progress and potential. *Expert Rev. Proteomics* 13: 833-843.
4. Niu, L., et al. 2022. Dynamic human liver proteome atlas reveals functional insights into disease pathways. *Mol. Syst. Biol.* 18: e10947.

SOURCE

Organism: *Homo sapiens* (human)
 Organ: Liver
 Source: Human liver extract is derived from healthy, normal (non-diseased) male liver.

Infectious disease testing: HIV 1 Ab negative, HIV 2 Ab negative, Syphilis negative, HTLV negative, HCV Ab negative, HBc Ab negative, HBs Ag negative.

PRODUCT

Each vial contains 500 µg protein in 200 µl of an SDS-PAGE Western Blotting buffer, which consists of 100 µl RIPA Lysis Buffer and 100 µl Electrophoresis Buffer, 2X.

APPLICATIONS

human liver extract is provided as a Western Blotting positive control. Recommended use is 50 µg (20 µl) per lane. Sample vial should be boiled once prior to use.

PREPARATION METHOD

Frozen human liver tissues are reduced to a granular powder using a tissue crusher. Crushed tissues are suspended in solution and lysed using the RIPA Lysis Buffer System (sc-24948). The lysate is adjusted to contain 500 µg of total cellular protein in 100 µl before adding an equal volume of Electrophoresis Sample Buffer, 2X (sc-24945). Final concentration of product is 500 µg total protein in a final volume of 200 µl.

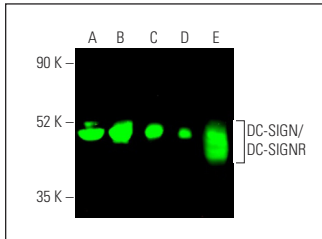
STORAGE

Store at -20° C; stable for one year from the date of shipment. Non-hazardous. No MSDS required. Minimize repeated freezing and thawing.

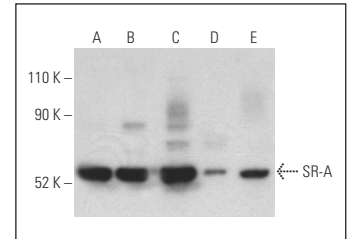
RESEARCH USE

For research use only, not for use in diagnostic procedures.

DATA



DC-SIGN/DC-SIGNR (B-2): sc-74589. Near-Infrared western blot analysis of DC-SIGN/DC-SIGNR expression in THP-1 (A), HuT 78 (B), CCRF-CEM (C) and K-562 (D) whole cell lysates and human liver tissue extract (E). Blocked with UltraCruz[®] Blocking Reagent: sc-516214. Detection reagent used: m-IgG_{2b} BP-CFL 680: sc-542749.



SR-A (E-5): sc-166184. Western blot analysis of SR-A expression in THP-1 (A) and CCRF-CEM (B) whole cell lysates and human liver (C), human placenta (D) and human lung (E) tissue extracts. Detection reagent used: m-IgG_{2a} BP-HRP: sc-542731.

PROTOCOLS

See our web site at www.scbt.com or our catalog for detailed protocols and support products.