



# SZABO SCANDIC

Part of Europa Biosite

## Produktinformation



Forschungsprodukte & Biochemikalien



Zellkultur & Verbrauchsmaterial



Diagnostik & molekulare Diagnostik



Laborgeräte & Service

Weitere Information auf den folgenden Seiten!  
See the following pages for more information!



### Lieferung & Zahlungsart

siehe unsere [Liefer- und Versandbedingungen](#)

### Zuschläge

- Mindermengenzuschlag
- Trockeneiszuschlag
- Gefahrgutzuschlag
- Expressversand

### SZABO-SCANDIC HandelsgmbH

Quellenstraße 110, A-1100 Wien

T. +43(0)1 489 3961-0

F. +43(0)1 489 3961-7

[mail@szabo-scandic.com](mailto:mail@szabo-scandic.com)

[www.szabo-scandic.com](http://www.szabo-scandic.com)

[linkedin.com/company/szaboscandic](https://www.linkedin.com/company/szaboscandic) 

# human thyroid extract: sc-363782

## BACKGROUND

Santa Cruz Biotechnology offers a variety of tissue extracts for use in combination with our antibodies as Western Blotting controls. Human thyroid extract is derived from normal, healthy human thyroid tissue using a procedure that ensures protein integrity and lot-to-lot reproducibility. All tissue extracts are tested by Western Blotting to assure that each one contains the expected concentration and assortment of proteins. Numerous antibodies directed against a wide array of mammalian proteins are used to test each tissue extract.

## REFERENCES

1. Dietze, A., Peng, Q., Selbo, P.K., Kaalhus, O., Müller, C., Bown, S. and Berg, K. 2005. Enhanced photodynamic destruction of a transplantable fibrosarcoma using photochemical internalisation of gelonin. *Br. J. Cancer* 92: 2004-2009.
2. Wang, C.X., Koay, D.C., Edwards, A., Lu, Z., Mor, G., Ocal, I.T. and Digiovanna, M.P. 2005. *In vitro* and *in vivo* effects of combination of Trastuzumab (Herceptin) and Tamoxifen in breast cancer. *Breast Cancer Res. Treat.* 92: 251-263.

## SOURCE

human thyroid extract is derived from normal, healthy human thyroid tissue. The human thyroid tissue is negative for human HIV, hepatitis B and hepatitis C.

## PRODUCT

Each vial contains 500 µg protein in 200 µl of an SDS-PAGE Western Blotting buffer, which consists of 100 µl RIPA Lysis Buffer and 100 µl Electrophoresis Buffer, 2X.

## APPLICATIONS

human thyroid extract is provided as a Western Blotting positive control. Recommended use is 50 µg (20 µl) per lane. Sample vial should be boiled once prior to use.

## PREPARATION METHOD

Frozen tissues are reduced to a granular powder using a tissue crusher. Crushed tissues are suspended in solution and lysed using the RIPA Lysis Buffer System (sc-24948). The BCA Protein Assay Kit (sc-202389) is used to determine the total protein concentration. The lysate is adjusted to contain 500 µg of total cellular protein in 100 µl before adding an equal volume of Electrophoresis Sample Buffer, 2X (sc-24945). Final concentration of product is 500 µg total protein in a final volume of 200 µl.

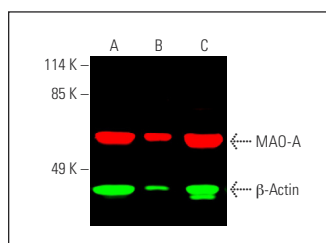
## STORAGE

Store at -20° C; stable for one year from the date of shipment. Non-hazardous. No MSDS required. Minimize repeated freezing and thawing.

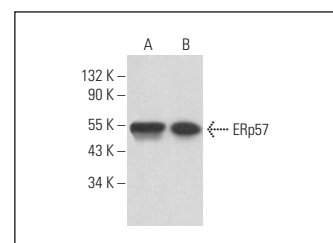
## RESEARCH USE

For research use only, not for use in diagnostic procedures.

## DATA



Simultaneous direct near-infrared western blot analysis of MAO-A expression, detected with MAO-A (G-10) Alexa Fluor® 790: sc-271123 AF790 and β-Actin expression, detected with β-Actin (C4) Alexa Fluor® 680: sc-47778 AF680 in human small intestine (A), human thyroid (B) and human placenta (C) tissue extracts. Blocked with UltraCruz® Blocking Reagent: sc-516214.



ERp57 (4E69): sc-71075. Western blot analysis of ERp57 expression in Daudi whole cell lysate (A) and human thyroid tissue extract (B).

## PROTOCOLS

See our web site at [www.scbt.com](http://www.scbt.com) for detailed protocols and support products.