



# SZABO SCANDIC

Part of Europa Biosite

## Produktinformation



Forschungsprodukte & Biochemikalien



Zellkultur & Verbrauchsmaterial



Diagnostik & molekulare Diagnostik



Laborgeräte & Service

Weitere Information auf den folgenden Seiten!  
See the following pages for more information!



### Lieferung & Zahlungsart

siehe unsere [Liefer- und Versandbedingungen](#)

### Zuschläge

- Mindermengenzuschlag
- Trockeneiszuschlag
- Gefahrgutzuschlag
- Expressversand

### SZABO-SCANDIC HandelsgmbH

Quellenstraße 110, A-1100 Wien

T. +43(0)1 489 3961-0

F. +43(0)1 489 3961-7

[mail@szabo-scandic.com](mailto:mail@szabo-scandic.com)

[www.szabo-scandic.com](http://www.szabo-scandic.com)

[linkedin.com/company/szaboscandic](https://www.linkedin.com/company/szaboscandic) 

# A2058 Whole Cell Lysate: sc-364178

## BACKGROUND

Santa Cruz Biotechnology offers a variety of whole cell lysates for use in combination with our antibodies as Western Blotting controls. A2058 Whole Cell Lysate is derived from the A2058 cell line using a procedure that ensures protein integrity and lot-to-lot reproducibility. All lysates are tested by Western Blotting to assure that each one contains the expected concentration and assortment of proteins. Numerous antibodies directed against a wide array of mammalian proteins are used to test each lysate.

The A2058 cell line is highly invasive and provides a source of cellular invasion associated proteins, such as the 72 kDa type IV collagenase, tissue inhibitor of metalloproteinase-2 (TIMP-2), autocrine motility factor and the 67 kDa laminin receptor.

## REFERENCES

1. Fabricant, R.N., De Larco, J.E. and Todaro, G.J. 1977. Nerve growth factor receptors on human melanoma cells in culture. *Proc. Natl. Acad. Sci. USA* 74: 565-569.
2. Sherwin, S.A., Sliski, A.H. and Todaro, G.J. 1979. Human melanoma cells have both nerve growth factor and nerve growth factor-specific receptors on their cell surfaces. *Proc. Natl. Acad. Sci. USA* 76: 1288-1292.
3. Todaro, G.J., Fryling, C. and De Larco, J.E. 1980. Transforming growth factors produced by certain human tumor cells: polypeptides that interact with epidermal growth factor receptors. *Proc. Natl. Acad. Sci. USA* 77: 5258-5262.

## SOURCE

A2058 Whole Cell Lysate is derived from the A2058 cell line.

Organism: *Homo sapiens* (human)  
 Tissue: Skin  
 Disease: Melanoma  
 Cell Type: Epithelial  
 Growth Properties: Adherent

## PRODUCT

Each vial contains 500 µg protein in 200 µl of an SDS-PAGE Western Blotting buffer, which consists of 100 µl RIPA Lysis Buffer and 100 µl Electrophoresis Buffer, 2X.

## APPLICATIONS

A2058 Whole Cell Lysate is provided as a Western Blotting positive control. Recommended use is 50 µg (20 µl) per lane. Sample vial should be boiled once prior to use.

## STORAGE

Store at -20° C; stable for one year from the date of shipment. Non-hazardous. No MSDS required. Minimize repeated freezing and thawing.

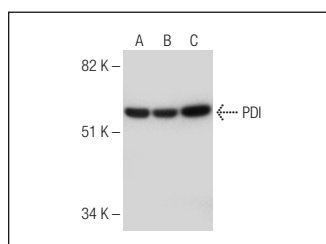
## RESEARCH USE

For research use only, not for use in diagnostic procedures.

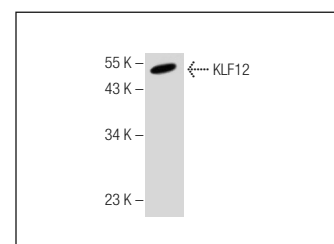
## PREPARATION METHOD

Cells are cultured with appropriate media conditions and allowed to reach a confluency of 75%. Cells are lysed using the RIPA Lysis Buffer System (sc-24948). The BCA Protein Assay Kit (sc-202389) is used to determine the total protein concentration. The lysate is adjusted to contain 500 µg of total cellular protein in 100 µl before adding an equal volume of Electrophoresis Sample Buffer, 2X (sc-24945). Final concentration of product is 500 µg total protein in a final volume of 200 µl.

## DATA



PDI (A-1): sc-376370. Western blot analysis of PDI expression in MOLT-4 (A), Raji (B) and A2058 (C) whole cell lysates.



KLF12 (N-16): sc-84347. Western blot analysis of KLF12 expression in A2058 whole cell lysate.

## PROTOCOLS

See our web site at [www.scbt.com](http://www.scbt.com) or our catalog for detailed protocols and support products.