



# SZABO SCANDIC

Part of Europa Biosite

## Produktinformation



Forschungsprodukte & Biochemikalien



Zellkultur & Verbrauchsmaterial



Diagnostik & molekulare Diagnostik



Laborgeräte & Service

Weitere Information auf den folgenden Seiten!  
See the following pages for more information!



### Lieferung & Zahlungsart

siehe unsere [Liefer- und Versandbedingungen](#)

### Zuschläge

- Mindermengenzuschlag
- Trockeneiszuschlag
- Gefahrgutzuschlag
- Expressversand

### SZABO-SCANDIC HandelsgmbH

Quellenstraße 110, A-1100 Wien

T. +43(0)1 489 3961-0

F. +43(0)1 489 3961-7

[mail@szabo-scandic.com](mailto:mail@szabo-scandic.com)

[www.szabo-scandic.com](http://www.szabo-scandic.com)

[linkedin.com/company/szaboscandic](https://www.linkedin.com/company/szaboscandic) 

# HT-1080 Whole Cell Lysate: sc-364183

## BACKGROUND

Santa Cruz Biotechnology offers a variety of whole cell lysates for use in combination with our antibodies as Western Blotting controls. HT-1080 Whole Cell Lysate is derived from the HT-1080 cell line using a procedure that ensures protein integrity and lot-to-lot reproducibility. All lysates are tested by Western Blotting to assure that each one contains the expected concentration and assortment of proteins. Numerous antibodies directed against a wide array of mammalian proteins are used to test each lysate. HT-1080 cells contain an activated N-Ras oncogene.

## REFERENCES

1. Rasheed, S., Nelson-Rees, W.A., Toth, E.M., Arnstein, P. and Gardner, M.B. 1974. Characterization of a newly derived human sarcoma cell line (HT-1080). *Cancer* 33: 1027-1033.
2. Chen, T.R., Hay, R.J. and Macy, M.L. 1983. Intercellular karyotypic similarity in near-diploid cell lines of human tumor origins. *Cancer Genet. Cytogenet.* 10: 351-362.
3. Geiser, A.G., Anderson, M.J. and Stanbridge, E.J. 1989. Suppression of tumorigenicity in human cell hybrids derived from cell lines expressing different activated ras oncogenes. *Cancer Res.* 49: 1572-1577.

## SOURCE

HT-1080 Whole Cell Lysate is derived from the HT-1080 cell line.

Organism: *Homo sapiens* (human)  
Tissue: Connective tissue  
Disease: Fibrosarcoma  
Cell Type: Epithelial  
Growth Properties: Adherent

## PRODUCT

Each vial contains 500 µg protein in 200 µl of an SDS-PAGE Western Blotting buffer, which consists of 100 µl RIPA Lysis Buffer and 100 µl Electrophoresis Buffer, 2X.

## APPLICATIONS

HT-1080 Whole Cell Lysate is provided as a Western Blotting positive control. Recommended use is 50 µg (20 µl) per lane. Sample vial should be boiled once prior to use.

## PREPARATION METHOD

Cells are cultured with appropriate media conditions and allowed to reach a confluency of 75%. Cells are lysed using the RIPA Lysis Buffer System (sc-24948). The BCA Protein Assay Kit (sc-202389) is used to determine the total protein concentration. The lysate is adjusted to contain 500 µg of total cellular protein in 100 µl before adding an equal volume of Electrophoresis Sample Buffer, 2X (sc-24945). Final concentration of product is 500 µg total protein in a final volume of 200 µl.

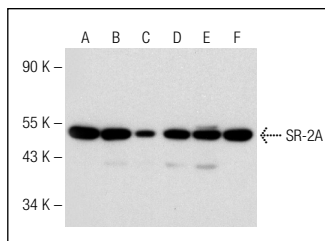
## RESEARCH USE

For research use only, not for use in diagnostic procedures.

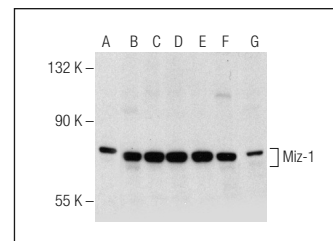
## STORAGE

Store at -20° C; stable for one year from the date of shipment. Non-hazardous. No MSDS required. Minimize repeated freezing and thawing.

## DATA



SR-2A (A-F): sc-166775. Western blot analysis of SR-2A expression in HT-1080 (A), HEK293 (B), PC-3 (C), JAR (D), U-87 MG (E) and T24 (F) whole cell lysates.



Miz-1 (B-G): sc-136985. Western blot analysis of Miz-1 expression in HeLa (A), HT-1080 (B), Caco-2 (C), HL-60 (D), U-937 (E), NIH/3T3 (F) and HCT 116 (G) whole cell lysates.

## PROTOCOLS

See our web site at [www.scbt.com](http://www.scbt.com) or our catalog for detailed protocols and support products.