



SZABO SCANDIC

Part of Europa Biosite

Produktinformation



Forschungsprodukte & Biochemikalien



Zellkultur & Verbrauchsmaterial



Diagnostik & molekulare Diagnostik



Laborgeräte & Service

Weitere Information auf den folgenden Seiten!
See the following pages for more information!



Lieferung & Zahlungsart

siehe unsere [Liefer- und Versandbedingungen](#)

Zuschläge

- Mindermengenzuschlag
- Trockeneiszuschlag
- Gefahrgutzuschlag
- Expressversand

SZABO-SCANDIC HandelsgmbH

Quellenstraße 110, A-1100 Wien

T. +43(0)1 489 3961-0

F. +43(0)1 489 3961-7

mail@szabo-scandic.com

www.szabo-scandic.com

[linkedin.com/company/szaboscandic](https://www.linkedin.com/company/szaboscandic) 

OV-90 Whole Cell Lysate: sc-364191

BACKGROUND

Santa Cruz Biotechnology offers a variety of whole cell lysates for use in combination with our antibodies as Western Blotting controls. OV-90 Whole Cell Lysate is derived from the OV-90 cell line using a procedure that ensures protein integrity and lot-to-lot reproducibility. All lysates are tested by Western Blotting to assure that each one contains the expected concentration and assortment of proteins. Numerous antibodies directed against a wide array of mammalian proteins are used to test each lysate.

The OV-90 cell line was initiated in August 1992 from a patient of French-Canadian descent with no family history of ovarian cancer. Like TOV-21G, the OV-90 cell line exhibits a deletion at chromosome 3p24. The TOV-112D cell line does not exhibit a deletion at chromosome 3p24.

REFERENCES

- Lounis, H., Mes-Masson, A.M., Dion, F., Bradley, W.E., Seymour, R.J., Provencher, D. and Tonin, P.N. 1998. Mapping of chromosome 3p deletions in human epithelial ovarian tumors. *Oncogene* 17: 2359-2365.
- Mes-Masson, A.M. and Provencher, D. 1998. Primary cultures of normal and tumoral human ovarian epithelium. US Patent 5,710,038.
- Provencher, D.M., Lounis, H., Champoux, L., Tétrault, M., Manderson, E.N., Wang, J.C., Eydoux, P., Savoie, R., Tonin, P.N. and Mes-Masson, A.M. 2000. Characterization of four novel epithelial ovarian cancer cell lines. *In Vitro Cell. Dev. Biol. Anim.* 36: 357-361.

SOURCE

OV-90 Whole Cell Lysate is derived from the OV-90 cell line.

Organism: *Homo sapiens* (human)
 Tissue: Ovary
 Tumor Stage: Grade 3, stage IIIC
 Disease: Malignant papillary serous adenocarcinoma
 Cell Type: Epithelial
 Growth Properties: Adherent

PRODUCT

Each vial contains 500 µg protein in 200 µl of an SDS-PAGE Western Blotting buffer, which consists of 100 µl RIPA Lysis Buffer and 100 µl Electrophoresis Buffer, 2X.

APPLICATIONS

OV-90 Whole Cell Lysate is provided as a Western Blotting positive control. Recommended use is 50 µg (20 µl) per lane. Sample vial should be boiled once prior to use.

STORAGE

Store at -20° C; stable for one year from the date of shipment. Non-hazardous. No MSDS required. Minimize repeated freezing and thawing.

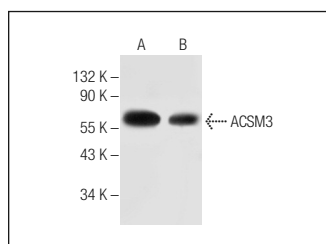
RESEARCH USE

For research use only, not for use in diagnostic procedures.

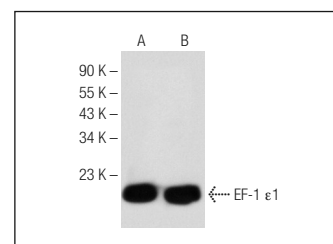
PREPARATION METHOD

Cells are cultured with appropriate media conditions and allowed to reach a confluency of 75%. Cells are lysed using the RIPA Lysis Buffer System (sc-24948). The BCA Protein Assay Kit (sc-202389) is used to determine the total protein concentration. The lysate is adjusted to contain 500 µg of total cellular protein in 100 µl before adding an equal volume of Electrophoresis Sample Buffer, 2X (sc-24945). Final concentration of product is 500 µg total protein in a final volume of 200 µl.

DATA



ACSM3 (G-8): sc-377173. Western blot analysis of ACSM3 expression in A549 (A) and OV-90 (B) whole cell lysates.



EF-1 ε1 (E-4): sc-376019. Western blot analysis of EF-1 ε1 expression in SK-MEL-28 (A) and OV-90 (B) whole cell lysates.

PROTOCOLS

See our web site at www.scbt.com or our catalog for detailed protocols and support products.