



# SZABO SCANDIC

Part of Europa Biosite

## Produktinformation



Forschungsprodukte & Biochemikalien



Zellkultur & Verbrauchsmaterial



Diagnostik & molekulare Diagnostik



Laborgeräte & Service

Weitere Information auf den folgenden Seiten!  
See the following pages for more information!



### Lieferung & Zahlungsart

siehe unsere [Liefer- und Versandbedingungen](#)

### Zuschläge

- Mindermengenzuschlag
- Trockeneiszuschlag
- Gefahrgutzuschlag
- Expressversand

### SZABO-SCANDIC HandelsgmbH

Quellenstraße 110, A-1100 Wien

T. +43(0)1 489 3961-0

F. +43(0)1 489 3961-7

[mail@szabo-scandic.com](mailto:mail@szabo-scandic.com)

[www.szabo-scandic.com](http://www.szabo-scandic.com)

[linkedin.com/company/szaboscandic](https://www.linkedin.com/company/szaboscandic) 

# Raji Whole Cell Lysate: sc-364236

## BACKGROUND

Santa Cruz Biotechnology offers a variety of whole cell lysates for use in combination with our antibodies as Western Blotting controls. Raji Whole Cell Lysate is derived from the Raji cell line using a procedure that ensures protein integrity and lot-to-lot reproducibility. All lysates are tested by Western Blotting to assure that each one contains the expected concentration and assortment of proteins. Numerous antibodies directed against a wide array of mammalian proteins are used to test each lysate.

The Raji line of lymphoblast-like cells was established by R.J.V. Pulvertaft in 1963 from a Burkitt's lymphoma of the left maxilla of an 11 year old Black male. Raji is EBNA positive.

## REFERENCES

1. Pulvertaft, J.V. 1964. Cytology of Burkitt's tumour (African lymphoma). *Lancet* 1: 238-240.
2. Epstein, M.A. and Barr, Y.M. 1965. Characteristics and mode of growth of tissue culture strain (EB1) of human lymphoblasts from Burkitt's lymphoma. *J. Natl. Cancer Inst.* 34: 231-240.
3. Ohsugi, Y., Gershwin, M.E., Owens, R.B. and Nelson-Rees, W.A. 1980. Tumorigenicity of human malignant lymphoblasts: comparative study with unmanipulated nude mice, antilymphocyte serum-treated nude mice, and X-irradiated nude mice. *J. Natl. Cancer Inst.* 65: 715-718.

## SOURCE

Raji Whole Cell Lysate is derived from the Raji cell line.

Organism: *Homo sapiens* (human)  
Disease: Burkitt's lymphoma  
Cell Type: B lymphocyte  
Growth Properties: Suspension

## PRODUCT

Each vial contains 500 µg protein in 200 µl of an SDS-PAGE Western Blotting buffer, which consists of 100 µl RIPA Lysis Buffer and 100 µl Electrophoresis Buffer, 2X.

## APPLICATIONS

Raji Whole Cell Lysate is provided as a Western Blotting positive control. Recommended use is 50 µg (20 µl) per lane. Sample vial should be boiled once prior to use.

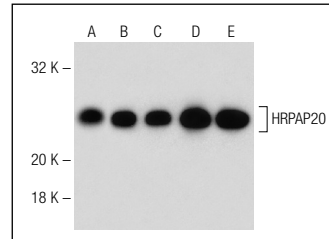
## PREPARATION METHOD

Cells are cultured with appropriate media conditions and allowed to reach a confluency of 75%. Cells are lysed using the RIPA Lysis Buffer System (sc-24948). The BCA Protein Assay Kit (sc-202389) is used to determine the total protein concentration. The lysate is adjusted to contain 500 µg of total cellular protein in 100 µl before adding an equal volume of Electrophoresis Sample Buffer, 2X (sc-24945). Final concentration of product is 500 µg total protein in a final volume of 200 µl.

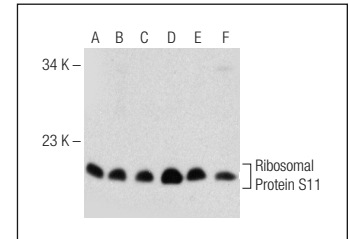
## STORAGE

Store at -20° C; stable for one year from the date of shipment. Non-hazardous. No MSDS required. Minimize repeated freezing and thawing.

## DATA



HRPAP20 (G-10): sc-166928. Western blot analysis of HRPAP20 expression in T-47D (A), Ramos (B), MDA-MB-231 (C), K-562 (D) and Raji (E) whole cell lysates.



Ribosomal Protein S11 (D-16): sc-248430. Western blot analysis of Ribosomal Protein S11 expression in Jurkat (A), K-562 (B), Ramos (C), Raji (D), HL-60 (E) and A2058 (F) whole cell lysates.

## RESEARCH USE

For research use only, not for use in diagnostic procedures.

## PROTOCOLS

See our web site at [www.scbt.com](http://www.scbt.com) or our catalog for detailed protocols and support products.