



SZABO SCANDIC

Part of Europa Biosite

Produktinformation



Forschungsprodukte & Biochemikalien



Zellkultur & Verbrauchsmaterial



Diagnostik & molekulare Diagnostik



Laborgeräte & Service

Weitere Information auf den folgenden Seiten!
See the following pages for more information!



Lieferung & Zahlungsart

siehe unsere [Liefer- und Versandbedingungen](#)

Zuschläge

- Mindermengenzuschlag
- Trockeneiszuschlag
- Gefahrgutzuschlag
- Expressversand

SZABO-SCANDIC HandelsgmbH

Quellenstraße 110, A-1100 Wien

T. +43(0)1 489 3961-0

F. +43(0)1 489 3961-7

mail@szabo-scandic.com

www.szabo-scandic.com

[linkedin.com/company/szaboscandic](https://www.linkedin.com/company/szaboscandic) 

MAGE-D4B (h): 293T Lysate: sc-369074

BACKGROUND

MAGE-D4 (melanoma-associated antigen D4, MAGE-E1 antigen) and MAGE-D4B (melanoma-associated antigen D4B) are 741 amino acid proteins encoded by the human gene *MAGED4* and *MAGED4B*, respectively. Genes of the MAGE family direct the expression of tumor antigens that are recognized on human melanomas by autologous cytolytic T lymphocytes. MAGE-D4/MAGE-D4B are believed to be glioma-specific members of MAGE family. Among cancer cells, only in glioma cells are both isoforms of MAGE-D4/MAGE-D4B specifically expressed. Among normal tissues, MAGE-D4/MAGE-D4B are expressed only in brain and ovary. Although MAGE-D4/MAGE-D4B are expressed at high levels in malignant tumors as compared to normal tissue, MAGE-D4/MAGE-D4B protein expression is not considered to be of prognostic significance.

REFERENCES

1. Sasaki, M., et al. 2001. MAGE-E1, a new member of the melanoma-associated antigen gene family and its expression in human glioma. *Cancer Res.* 61: 4809-4814.
2. Kawano, Y., et al. 2001. Structural characterization and chromosomal localization of the MAGE-E1 gene. *Gene* 277: 129-137.
3. Wang, L., et al. 2004. Cloning of human testicular carcinoma antigen MAGE-E1 gene and its expression in *E. coli*. *Xi Bao Yu Fen Zi Mian Yi Xue Za Zhi* 19: 148-149.
4. Lurquin, C., et al. 2005. Contrasting frequencies of antitumor and anti-vaccine T cells in metastases of a melanoma patient vaccinated with a MAGE tumor antigen. *J. Exp. Med.* 201: 249-257.
5. Krämer, B.F., et al. 2005. *MAGED4*-expression in renal cell carcinoma and identification of an HLA-A*25-restricted MHC class I ligand from solid tumor tissue. *Cancer Biol. Ther.* 4: 943-948.

CHROMOSOMAL LOCATION

Genetic locus: *MAGED4B* (human) mapping to Xp11.22.

PRODUCT

MAGE-D4B (h): 293T Lysate represents a lysate of human MAGE-D4B transfected 293T cells and is provided as 100 µg protein in 200 µl SDS-PAGE buffer.

APPLICATIONS

MAGE-D4B (h): 293T Lysate is suitable as a Western Blotting positive control for human reactive MAGE-D4B antibodies. Recommended use: 10-20 µl per lane.

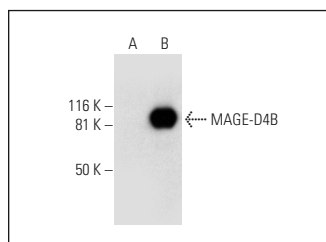
Control 293T Lysate: sc-117752 is available as a Western Blotting negative control lysate derived from non-transfected 293T cells.

MAGE-D4B (F-9): sc-393058 is recommended as a positive control antibody for Western Blot analysis of enhanced human MAGE-D4B expression in MAGE-D4B transfected 293T cells (starting dilution 1:100, dilution range 1:100-1:1,000).

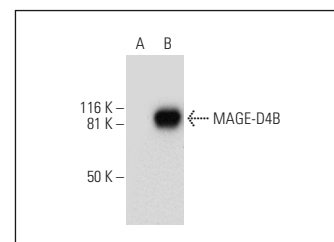
RECOMMENDED SUPPORT REAGENTS

To ensure optimal results, the following support reagents are recommended:
 1) Western Blotting: use m-IgGκ BP-HRP: sc-516102 or m-IgGκ BP-HRP (Cruz Marker): sc-516102-CM (dilution range: 1:1000-1:10000), Cruz Marker™ Molecular Weight Standards: sc-2035, UltraCruz® Blocking Reagent: sc-516214 and Western Blotting Luminol Reagent: sc-2048.

DATA



MAGE-D4/MAGE-D4B (F-9): sc-393058. Western blot analysis of MAGE-D4B expression in non-transfected: sc-117752 (A) and human MAGE-D4B transfected: sc-369074 (B) 293T whole cell lysates.



MAGE-D4/MAGE-D4B (G-12): sc-393059. Western blot analysis of MAGE-D4B expression in non-transfected: sc-117752 (A) and human MAGE-D4B transfected: sc-369074 (B) 293T whole cell lysates.

STORAGE

Store at -20° C. Repeated freezing and thawing should be minimized. Sample vial should be boiled once prior to use. Non-hazardous. No MSDS required.

RESEARCH USE

For research use only, not for use in diagnostic procedures.

PROTOCOLS

See our web site at www.scbt.com for detailed protocols and support products.