



SZABO SCANDIC

Part of Europa Biosite

Produktinformation



Forschungsprodukte & Biochemikalien



Zellkultur & Verbrauchsmaterial



Diagnostik & molekulare Diagnostik



Laborgeräte & Service

Weitere Information auf den folgenden Seiten!
See the following pages for more information!



Lieferung & Zahlungsart

siehe unsere [Liefer- und Versandbedingungen](#)

Zuschläge

- Mindermengenzuschlag
- Trockeneiszuschlag
- Gefahrgutzuschlag
- Expressversand

SZABO-SCANDIC HandelsgmbH

Quellenstraße 110, A-1100 Wien

T. +43(0)1 489 3961-0

F. +43(0)1 489 3961-7

mail@szabo-scandic.com

www.szabo-scandic.com

[linkedin.com/company/szaboscandic](https://www.linkedin.com/company/szaboscandic) 

KLF3 (h): 293T Lysate: sc-370637

BACKGROUND

Krüppel-like factors (KLFs) comprise a family of evolutionarily conserved zinc finger-containing transcription factors with diverse regulatory functions in cell growth, proliferation, differentiation and embryogenesis. Individual members of the Sp1-like/KLF family can function either as activators or repressors, depending on which promoter they bind and the coregulators with which they interact. KLF6, also designated Zf9 or CPBP (core promoter-binding protein), and KLF3 are Krüppel-like zinc finger containing transcription factors. KLF6 is rapidly induced during hepatic stellate cell activation and transactivates a reporter gene driven by the collagen I promoter, suggesting KLF6 plays a role in the response to tissue injury. KLF3 may play a role in hematopoiesis.

REFERENCES

- van Vliet, J., et al. 2000. Human Krüppel-like factor 8: a CACCC-box binding protein that associates with CtBP and represses transcription. *Nucleic Acids Res.* 28: 1955-1962.
- Kaczynski, J., et al. 2003. Sp1- and Krüppel-like transcription factors. *Genome Biol.* 4: 206.
- Turner, J., et al. 2003. The LIM protein FHL3 binds basic Krüppel-like factor/Krüppel-like factor 3 and its co-repressor C-terminal-binding protein 2. *J. Biol. Chem.* 278: 12786-12795.
- Yang, X.O., et al. 2003. Regulation of T-cell receptor D β 1 promoter by KLF5 through reiterated GC-rich motifs. *Blood* 101: 4492-4499.
- Chiambaretta, F., et al. 2004. Cell and tissue specific expression of human Krüppel-like transcription factors in human ocular surface. *Mol. Vis.* 10: 901-909.
- Ghaleb, A.M., et al. 2005. Krüppel-like factors 4 and 5: the yin and yang regulators of cellular proliferation. *Cell Res.* 15: 92-96.

CHROMOSOMAL LOCATION

Genetic locus: KLF3 (human) mapping to 4p14.

PRODUCT

KLF3 (h): 293T Lysate represents a lysate of human KLF3 transfected 293T cells and is provided as 100 μ g protein in 200 μ l SDS-PAGE buffer.

STORAGE

Store at -20° C. Repeated freezing and thawing should be minimized. Sample vial should be boiled once prior to use. Non-hazardous. No MSDS required.

APPLICATIONS

KLF3 (h): 293T Lysate is suitable as a Western Blotting positive control for human reactive KLF3 antibodies. Recommended use: 10-20 μ l per lane.

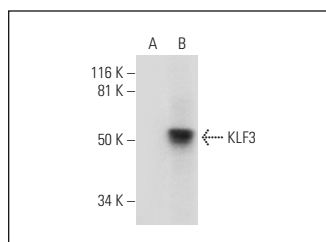
Control 293T Lysate: sc-117752 is available as a Western Blotting negative control lysate derived from non-transfected 293T cells.

KLF3 (H-8): sc-393041 is recommended as a positive control antibody for Western Blot analysis of enhanced human KLF3 expression in KLF3 transfected 293T cells (starting dilution 1:100, dilution range 1:100-1:1,000).

RECOMMENDED SUPPORT REAGENTS

To ensure optimal results, the following support reagents are recommended:
 1) Western Blotting: use m-IgG κ BP-HRP: sc-516102 or m-IgG κ BP-HRP (Cruz Marker): sc-516102-CM (dilution range: 1:1000-1:10000), Cruz Marker™ Molecular Weight Standards: sc-2035, UltraCruz® Blocking Reagent: sc-516214 and Western Blotting Luminol Reagent: sc-2048.

DATA



KLF3 (H-8): sc-393041. Western blot analysis of KLF3 expression in non-transfected: sc-117752 (A) and human KLF3 transfected: sc-370637 (B) 293T whole cell lysates.

RESEARCH USE

For research use only, not for use in diagnostic procedures.

PROTOCOLS

See our web site at www.scbt.com for detailed protocols and support products.