



# SZABO SCANDIC

Part of Europa Biosite

## Produktinformation



Forschungsprodukte & Biochemikalien



Zellkultur & Verbrauchsmaterial



Diagnostik & molekulare Diagnostik



Laborgeräte & Service

Weitere Information auf den folgenden Seiten!  
See the following pages for more information!



### Lieferung & Zahlungsart

siehe unsere [Liefer- und Versandbedingungen](#)

### Zuschläge

- Mindermengenzuschlag
- Trockeneiszuschlag
- Gefahrgutzuschlag
- Expressversand

### SZABO-SCANDIC HandelsgmbH

Quellenstraße 110, A-1100 Wien

T. +43(0)1 489 3961-0

F. +43(0)1 489 3961-7

[mail@szabo-scandic.com](mailto:mail@szabo-scandic.com)

[www.szabo-scandic.com](http://www.szabo-scandic.com)

[linkedin.com/company/szaboscandic](https://www.linkedin.com/company/szaboscandic) 

# Slp2 (h2): 293T Lysate: sc-370989

## BACKGROUND

Slp2 (synaptotagmin-like protein 2), also known as exophilin-4, is a 895 amino acid peripheral membrane protein. Slp2 is believed to act as a Rab effector protein and may play a role in vesicle trafficking. Localized to the melanosome membrane and the intracytoplasmic membrane, Slp2 contains one Slp homology domain, two C2 domains and one Rab-binding domain. The Slp homology domain has been shown to bind specifically to the GTP-bound form of Rab 27a. Slp2 is expressed as two isoforms produced by alternative splicing.

## REFERENCES

1. Fukuda, M., et al. 2001. Novel splicing isoforms of synaptotagmin-like proteins 2 and 3: identification of the Slp homology domain. *Biochem. Biophys. Res. Commun.* 283: 513-519.
2. Craxton, M. 2001. Genomic analysis of synaptotagmin genes. *Genomics* 77: 43-49.
3. Strom, M., et al. 2002. A family of Rab27-binding proteins. Melanophilin links Rab27a and myosin Va function in melanosome transport. *J. Biol. Chem.* 277: 25423-25430.
4. Fukuda, M. 2003. Slp4-a/granuphilin- $\alpha$  inhibits dense-core vesicle exocytosis through interaction with the GDP-bound form of Rab27A in PC12 cells. *J. Biol. Chem.* 278: 15390-15396.
5. Yu, M., et al. 2007. Exophilin4/Slp2-a targets glucagon granules to the plasma membrane through unique Ca<sup>2+</sup>-inhibitory phospholipid-binding activity of the C2A domain. *Mol. Biol. Cell* 18: 688-696.
6. Kesari, A., et al. 2008. Dysferlin deficiency shows compensatory induction of Rab27A/Slp2a that may contribute to inflammatory onset. *Am. J. Pathol.* 173: 1476-1487.
7. Ménasché, G., et al. 2008. A newly identified isoform of Slp2a associates with Rab27a in cytotoxic T cells and participates to cytotoxic granule secretion. *Blood* 112: 5052-5062.
8. Holt, O., et al. 2008. Slp1 and Slp2-a localize to the plasma membrane of CTL and contribute to secretion from the immunological synapse. *Traffic* 9: 446-457.

## CHROMOSOMAL LOCATION

Genetic locus: SYTL2 (human) mapping to 11q14.1.

## PRODUCT

Slp2 (h2): 293T Lysate represents a lysate of human Slp2 transfected 293T cells and is provided as 100  $\mu$ g protein in 200  $\mu$ l SDS-PAGE buffer.

## STORAGE

Store at -20° C. Repeated freezing and thawing should be minimized. Sample vial should be boiled once prior to use. Non-hazardous. No MSDS required.

## RESEARCH USE

For research use only, not for use in diagnostic procedures.

## APPLICATIONS

Slp2 (h2): 293T Lysate is suitable as a Western Blotting positive control for human reactive Slp2 antibodies. Recommended use: 10-20  $\mu$ l per lane.

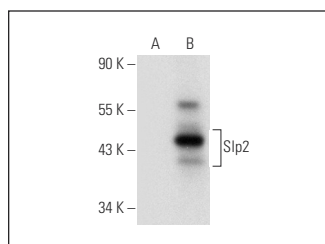
Control 293T Lysate: sc-117752 is available as a Western Blotting negative control lysate derived from non-transfected 293T cells.

Slp2 (C-4): sc-393847 is recommended as a positive control antibody for Western Blot analysis of enhanced human Slp2 expression in Slp2 transfected 293T cells (starting dilution 1:100, dilution range 1:100-1:1,000).

## RECOMMENDED SUPPORT REAGENTS

To ensure optimal results, the following support reagents are recommended:  
1) Western Blotting: use m-IgG $\kappa$  BP-HRP: sc-516102 or m-IgG $\kappa$  BP-HRP (Cruz Marker): sc-516102-CM (dilution range: 1:1000-1:10000), Cruz Marker™ Molecular Weight Standards: sc-2035, TBS Blotto A Blocking Reagent: sc-2333 and Western Blotting Luminol Reagent: sc-2048.

## DATA



Slp2 (C-4): sc-393847. Western blot analysis of Slp2 expression in non-transfected: sc-117752 (A) and human Slp2 transfected: sc-370989 (B) 293T whole cell lysates.

## PROTOCOLS

See our web site at [www.scbt.com](http://www.scbt.com) for detailed protocols and support products.