



# SZABO SCANDIC

Part of Europa Biosite

## Produktinformation



Forschungsprodukte & Biochemikalien



Zellkultur & Verbrauchsmaterial



Diagnostik & molekulare Diagnostik



Laborgeräte & Service

Weitere Information auf den folgenden Seiten!  
See the following pages for more information!



### Lieferung & Zahlungsart

siehe unsere [Liefer- und Versandbedingungen](#)

### Zuschläge

- Mindermengenzuschlag
- Trockeneiszuschlag
- Gefahrgutzuschlag
- Expressversand

### SZABO-SCANDIC HandelsgmbH

Quellenstraße 110, A-1100 Wien

T. +43(0)1 489 3961-0

F. +43(0)1 489 3961-7

[mail@szabo-scandic.com](mailto:mail@szabo-scandic.com)

[www.szabo-scandic.com](http://www.szabo-scandic.com)

[linkedin.com/company/szaboscandic](https://www.linkedin.com/company/szaboscandic) 

# GALT (h): 293T Lysate: sc-371459

## BACKGROUND

GALT (galactose-1-phosphate uridylyltransferase) is a 379 amino acid member of the galactose-1-phosphate uridylyltransferase type 1 family of proteins. GALT exists as a homodimer and is believed to play a role in galactose metabolism. More specifically, GALT is responsible for catalyzing the reaction of UDP-glucose with  $\alpha$ -D-galactose 1-phosphate to produce  $\alpha$ -D-glucose 1-phosphate and UDP-galactose. This is the second step of the Leloir pathway of galactose metabolism. The products of this reaction will either enter the glycolytic pathway to yield energy ( $\alpha$ -D-glucose 1-phosphate) or be used as a galactosyl donor in the synthesis of glycoproteins and glycolipids (UDP-galactose). Mutations in the gene encoding GALT can lead to galactosemia, a disorder (occurring from the inability to metabolize galactose) that is characterized by cataracts, mental retardation and jaundice. In newborns, galactosemia can be fatal if lactose is not removed from the diet.

## REFERENCES

- Reichardt, J.K. and Berg, P. 1988. Cloning and characterization of a cDNA encoding human galactose-1-phosphate uridylyl transferase. *Mol. Biol. Med.* 5: 107-122.
- Reichardt, J.K., Levy, H.L. and Woo, S.L. 1992. Molecular characterization of two galactosemia mutations and one polymorphism: implications for structure-function analysis of human galactose-1-phosphate uridylyltransferase. *Biochemistry* 31: 5430-5433.
- Ninfali, P., Bresolin, N., Dallapiccola, B. and Novelli, G. 1996. Molecular basis of galactose-1-phosphate uridylyltransferase deficiency involving skeletal muscle. *J. Neurol.* 243: 102-103.
- Goodman, M.T., Wu, A.H., Tung, K.H., McDuffie, K., Cramer, D.W., Wilkens, L.R., Terada, K., Reichardt, J.K. and Ng, W.G. 2002. Association of galactose-1-phosphate uridylyltransferase activity and N314D genotype with the risk of ovarian cancer. *Am. J. Epidemiol.* 156: 693-701.
- Online Mendelian Inheritance in Man, OMIM™. 2002. Johns Hopkins University, Baltimore, MD. MIM Number: 606999. World Wide Web URL: <http://www.ncbi.nlm.nih.gov/omim/>
- Karas, N., Gobec, L., Pfeifer, V., Mlinar, B., Battelino, T. and Lukac-Bajalo, J. 2003. Mutations in galactose-1-phosphate uridylyltransferase gene in patients with idiopathic presenile cataract. *J. Inherit. Metab. Dis.* 26: 699-704.
- Bosch, A.M., Waterham, H.R. and Bakker, H.D. 2004. From gene to disease: galactosemia and galactose-1-phosphate uridylyltransferase deficiency. *Ned. Tijdschr. Geneesk.* 148: 80-81.
- Slepek, T., Tang, M., Addo, F. and Lai, K. 2005. Intracellular galactose-1-phosphate accumulation leads to environmental stress response in yeast model. *Mol. Genet. Metab.* 86: 360-371.
- Slepek, T.I., Tang, M., Slepek, V.Z. and Lai, K. 2007. Involvement of endoplasmic reticulum stress in a novel classic galactosemia model. *Mol. Genet. Metab.* 92: 78-87.

## CHROMOSOMAL LOCATION

Genetic locus: GALT (human) mapping to 9p13.3.

## PRODUCT

GALT (h): 293T Lysate represents a lysate of human GALT transfected 293T cells and is provided as 100  $\mu$ g protein in 200  $\mu$ l SDS-PAGE buffer.

## APPLICATIONS

GALT (h): 293T Lysate is suitable as a Western Blotting positive control for human reactive GALT antibodies. Recommended use: 10-20  $\mu$ l per lane.

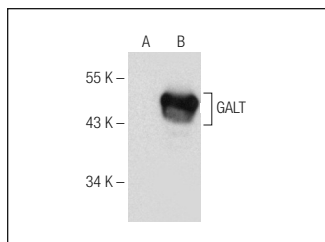
Control 293T Lysate: sc-117752 is available as a Western Blotting negative control lysate derived from non-transfected 293T cells.

GALT (G-1): sc-365577 is recommended as a positive control antibody for Western Blot analysis of enhanced human GALT expression in GALT transfected 293T cells (starting dilution 1:100, dilution range 1:100-1:1,000).

## RECOMMENDED SUPPORT REAGENTS

To ensure optimal results, the following support reagents are recommended:  
 1) Western Blotting: use m-IgG $\kappa$  BP-HRP: sc-516102 or m-IgG $\kappa$  BP-HRP (Cruz Marker): sc-516102-CM (dilution range: 1:1000-1:10000), Cruz Marker™ Molecular Weight Standards: sc-2035, UltraCruz® Blocking Reagent: sc-516214 and Western Blotting Luminol Reagent: sc-2048.

## DATA



GALT (G-1): sc-365577. Western blot analysis of GALT expression in non-transfected: sc-117752 (A) and human GALT transfected: sc-371459 (B) 293T whole cell lysates.

## STORAGE

Store at -20° C. Repeated freezing and thawing should be minimized. Sample vial should be boiled once prior to use. Non-hazardous. No MSDS required.

## RESEARCH USE

For research use only, not for use in diagnostic procedures.

## PROTOCOLS

See our web site at [www.scbt.com](http://www.scbt.com) for detailed protocols and support products.