



# SZABO SCANDIC

Part of Europa Biosite

## Produktinformation



Forschungsprodukte & Biochemikalien



Zellkultur & Verbrauchsmaterial



Diagnostik & molekulare Diagnostik



Laborgeräte & Service

Weitere Information auf den folgenden Seiten!  
See the following pages for more information!



### Lieferung & Zahlungsart

siehe unsere [Liefer- und Versandbedingungen](#)

### Zuschläge

- Mindermengenzuschlag
- Trockeneiszuschlag
- Gefahrgutzuschlag
- Expressversand

### SZABO-SCANDIC HandelsgmbH

Quellenstraße 110, A-1100 Wien

T. +43(0)1 489 3961-0

F. +43(0)1 489 3961-7

[mail@szabo-scandic.com](mailto:mail@szabo-scandic.com)

[www.szabo-scandic.com](http://www.szabo-scandic.com)

[linkedin.com/company/szaboscandic](https://www.linkedin.com/company/szaboscandic) 

# RGS8 (h): 293T Lysate: sc-371567

## BACKGROUND

The regulators of G protein signaling (RGS) proteins inhibit heterotrimeric G protein signaling. RGS proteins work by functioning as GTPase-activating proteins (which increase the GTPase activity of G protein  $\alpha$ -subunits) thereby driving G proteins into their inactive GDP-bound form. RGS8 is a 180 amino acid RGS protein that is expressed mainly in the brain, specifically in the Purkinje cells of the cerebellum. RGS8 differs from most other RGS members in that RGS8 has a positive effect on G protein-coupled inwardly rectifying K<sup>+</sup> (GIRK1/2) channels, whereas other RGS proteins function as simple negative regulators. Because both positive and negative effects have been observed with the RGS8 protein, RGS8 expression most likely improves upon the kinetic efficacy of G proteins. The NH<sub>2</sub> terminus of RGS8 is responsible for its subcellular localization.

## REFERENCES

- Saitoh, O., Kubo, Y., Miyatani, Y., Asano, T. and Nakata, H. 1997. RGS8 accelerates G protein-mediated modulation of K<sup>+</sup> currents. *Nature* 390: 525-529.
- Saitoh, O., Kubo, Y., Odagiri, M., Ichikawa, M., Yamagata, K. and Sekine, T. 1999. RGS7 and RGS8 differentially accelerate G protein-mediated modulation of K<sup>+</sup> currents. *J. Biol. Chem.* 274: 9899-9904.
- Saitoh, O., Masuho, I., Terakawa, I., Nomoto, S., Asano, T. and Kubo, Y. 2001. Regulator of G protein signaling 8 (RGS8) requires its NH<sub>2</sub> terminus for subcellular localization and acute desensitization of G protein-gated K<sup>+</sup> channels. *J. Biol. Chem.* 276: 5052-5058.
- Saitoh, O., Murata, Y., Odagiri, M., Itoh, M., Itoh, H., Misaka, T. and Kubo, Y. 2002. Alternative splicing of RGS8 gene determines inhibitory function of receptor type-specific Gq signaling. *Proc. Natl. Acad. Sci. USA* 99: 10138-10143.
- Online Mendelian Inheritance in Man, OMIM™. 2002. Johns Hopkins University, Baltimore, MD. MIM Number: 607189. World Wide Web URL: <http://www.ncbi.nlm.nih.gov/omim/>
- Saitoh, O. and Yoshihiro, K. 2004. Biochemical and electrophysiological analyses of RGS8 function. *Methods Enzymol.* 390: 129-148.
- Benians, A., Nobles, M. and Tinker, A. 2004. Participation of RGS8 in the ternary complex of agonist, receptor and G-protein. *Biochem. Soc. Trans.* 32: 1045-1047.
- Benians, A., Nobles, M., Hosny, S. and Tinker, A. 2005. Regulators of G-protein signaling form a quaternary complex with the agonist, receptor, and G-protein. A novel explanation for the acceleration of signaling activation kinetics. *J. Biol. Chem.* 280: 13383-13394.
- Kveberg, L., Ryan, J.C., Rolstad, B. and Inngjerdigen, M. 2005. Expression of regulator of G protein signalling cells, and their modulation by Ly49A and Ly49D. *Immunology* 115: 358-365.

## STORAGE

Store at -20° C. Repeated freezing and thawing should be minimized. Sample vial should be boiled once prior to use. Non-hazardous. No MSDS required.

## CHROMOSOMAL LOCATION

Genetic locus: RGS8 (human) mapping to 1q25.3.

## PRODUCT

RGS8 (h): 293T Lysate represents a lysate of human RGS8 transfected 293T cells and is provided as 100  $\mu$ g protein in 200  $\mu$ l SDS-PAGE buffer.

## APPLICATIONS

RGS8 (h): 293T Lysate is suitable as a Western Blotting positive control for human reactive RGS8 antibodies. Recommended use: 10-20  $\mu$ l per lane.

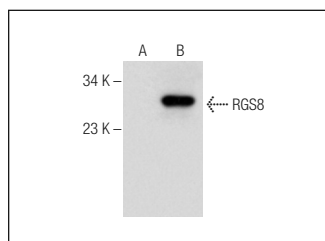
Control 293T Lysate: sc-117752 is available as a Western Blotting negative control lysate derived from non-transfected 293T cells.

RGS8 (C-5): sc-377354 is recommended as a positive control antibody for Western Blot analysis of enhanced human RGS8 expression in RGS8 transfected 293T cells (starting dilution 1:100, dilution range 1:100-1:1,000).

## RECOMMENDED SUPPORT REAGENTS

To ensure optimal results, the following support reagents are recommended:  
 1) Western Blotting: use m-IgG $\kappa$  BP-HRP: sc-516102 or m-IgG $\kappa$  BP-HRP (Cruz Marker): sc-516102-CM (dilution range: 1:1000-1:10000), Cruz Marker™ Molecular Weight Standards: sc-2035, UltraCruz® Blocking Reagent: sc-516214 and Western Blotting Luminol Reagent: sc-2048.

## DATA



RGS8 (C-5): sc-377354. Western blot analysis of RGS8 expression in non-transfected: sc-117752 (A) and human RGS8 transfected: sc-371567 (B) 293T whole cell lysates.

## RESEARCH USE

For research use only, not for use in diagnostic procedures.

## PROTOCOLS

See our web site at [www.scbt.com](http://www.scbt.com) for detailed protocols and support products.