



SZABO SCANDIC

Part of Europa Biosite

Produktinformation



Forschungsprodukte & Biochemikalien



Zellkultur & Verbrauchsmaterial



Diagnostik & molekulare Diagnostik



Laborgeräte & Service

Weitere Information auf den folgenden Seiten!
See the following pages for more information!



Lieferung & Zahlungsart

siehe unsere [Liefer- und Versandbedingungen](#)

Zuschläge

- Mindermengenzuschlag
- Trockeneiszuschlag
- Gefahrgutzuschlag
- Expressversand

SZABO-SCANDIC HandelsgmbH

Quellenstraße 110, A-1100 Wien

T. +43(0)1 489 3961-0

F. +43(0)1 489 3961-7

mail@szabo-scandic.com

www.szabo-scandic.com

[linkedin.com/company/szaboscandic](https://www.linkedin.com/company/szaboscandic) 

C3H/10T1/2 Cell Lysate: sc-3801

BACKGROUND

Santa Cruz Biotechnology offers a variety of whole cell lysates for use in combination with our antibodies as Western Blotting controls. C3H/10T1/2 Whole Cell Lysate is derived from the C3H/10T1/2 cell line using a procedure that ensures protein integrity and lot-to-lot reproducibility. All lysates are tested by Western Blotting to assure that each one contains the expected concentration and assortment of proteins. Numerous antibodies directed against a wide array of mammalian proteins are used to test each lysate.

The C3H/10T1/2 cell line was isolated in 1972 from a line of C3H mouse embryo cells. The cells are contact sensitive and there is no detectable background spontaneous transformation. They are highly susceptible to transformation by chemical agents and express H-2k antigen. Tested and found negative for ectromelia virus (mousepox).

REFERENCES

1. Reznikoff, C.A., Brankow, D.W. and Heidelberger, C. 1973. Establishment and characterization of a cloned line of C₃H mouse embryo cells sensitive to postconfluence inhibition of division. *Cancer Res.* 33: 3231-3238.
2. Rapp, U.R., Nowinski, R.C., Reznikoff, C.A. and Heidelberger, C. 1975. Endogenous oncornaviruses in chemically induced transformation. I. Transformation independent of virus production. *Virology* 65: 392-409.
3. Jain, M.K., Fujita, K.P., Hsieh, C.M., Endege, W.O., Sibinga, N.E., Yet, S.F., Kashiki, S., Lee, W.S., Perrella, M.A., Haber, E. and Lee, M.E. 1996. Molecular cloning and characterization of SmLIM, a developmentally regulated LIM protein preferentially expressed in aortic smooth muscle cells. *J. Biol. Chem.* 271: 10194-10199.

SOURCE

C3H/10T1/2 Whole Cell Lysate is derived from the C3H/10T1/2 cell line.

Organism: *Mus musculus* (mouse)
Strain: C₃H
Tissue: Embryo
Cell Type: Fibroblast
Growth Properties: Adherent

PRODUCT

Each vial contains 500 µg protein in 200 µl of an SDS-PAGE Western Blotting buffer, which consists of 100 µl RIPA Lysis Buffer and 100 µl Electrophoresis Buffer, 2X.

APPLICATIONS

C3H/10T1/2 Whole Cell Lysate is provided as a Western Blotting positive control. Recommended use is 50 µg (20 µl) per lane. Sample vial should be boiled once prior to use.

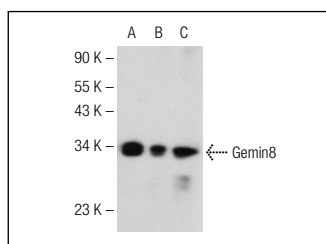
STORAGE

Store at -20° C; stable for one year from the date of shipment. Non-hazardous. No MSDS required. Minimize repeated freezing and thawing.

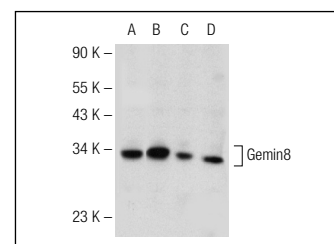
PREPARATION METHOD

Cells are cultured with appropriate media conditions and allowed to reach a confluency of 75%. Cells are lysed using the RIPA Lysis Buffer System (sc-24948). The BCA Protein Assay Kit (sc-202389) is used to determine the total protein concentration. The lysate is adjusted to contain 500 µg of total cellular protein in 100 µl before adding an equal volume of Electrophoresis Sample Buffer, 2X (sc-24945). Final concentration of product is 500 µg total protein in a final volume of 200 µl.

DATA



Gemin8 (D-4): sc-365879. Western blot analysis of Gemin8 expression in C3H/10T1/2 (A), NIH/3T3 (B) and P19 (C) whole cell lysates.



Gemin8 (1F8): sc-130669. Western blot analysis of Gemin8 expression in Rat 2 (A), C3H/10T1/2 (B), NIH/3T3 (C) and P19 (D) whole cell lysates.

RESEARCH USE

For research use only, not for use in diagnostic procedures.

PROTOCOLS

See our web site at www.scbt.com or our catalog for detailed protocols and support products.