



SZABO SCANDIC

Part of Europa Biosite

Produktinformation



Forschungsprodukte & Biochemikalien



Zellkultur & Verbrauchsmaterial



Diagnostik & molekulare Diagnostik



Laborgeräte & Service

Weitere Information auf den folgenden Seiten!
See the following pages for more information!



Lieferung & Zahlungsart

siehe unsere [Liefer- und Versandbedingungen](#)

Zuschläge

- Mindermengenzuschlag
- Trockeneiszuschlag
- Gefahrgutzuschlag
- Expressversand

SZABO-SCANDIC HandelsgmbH

Quellenstraße 110, A-1100 Wien

T. +43(0)1 489 3961-0

F. +43(0)1 489 3961-7

mail@szabo-scandic.com

www.szabo-scandic.com

[linkedin.com/company/szaboscandic](https://www.linkedin.com/company/szaboscandic) 

L8 Whole Cell Lysate: sc-3807

BACKGROUND

Santa Cruz Biotechnology offers a variety of whole cell lysates for use in combination with our antibodies as Western Blotting controls. L8 Whole Cell Lysate is derived from the L8 cell line using a procedure that ensures protein integrity and lot-to-lot reproducibility. All lysates are tested by Western Blotting to assure that each one contains the expected concentration and assortment of proteins. Numerous antibodies directed against a wide array of mammalian proteins are used to test each lysate.

The L8 cell line was originally isolated by D. Yaffe in 1969 from primary rat skeletal muscle cultures. Unlike the L6 cell line, no carcinogen was used to establish the L8 line.

REFERENCES

1. Richler, C. and Yaffe, D. 1970. The *in vitro* cultivation and differentiation capacities of myogenic cell lines. *Dev. Biol.* 23: 1-22.
2. Yaffe, D. and Saxel, O. 1977. A myogenic cell line with altered serum requirements for differentiation. *Differentiation* 7: 159-166.

SOURCE

L8 Whole Cell Lysate is derived from the L8 cell line.

Organism: *Rattus norvegicus* (rat)
Tissue: Skeletal muscle
Cell Type: Myoblast
Growth Properties: Adherent

PRODUCT

Each vial contains 500 µg protein in 200 µl of an SDS-PAGE Western Blotting buffer, which consists of 100 µl RIPA Lysis Buffer and 100 µl Electrophoresis Buffer, 2X.

APPLICATIONS

L8 Whole Cell Lysate is provided as a Western Blotting positive control. Recommended use is 50 µg (20 µl) per lane. Sample vial should be boiled once prior to use.

PREPARATION METHOD

Cells are cultured with appropriate media conditions and allowed to reach a confluency of 75%. Cells are lysed using the RIPA Lysis Buffer System (sc-24948). The BCA Protein Assay Kit (sc-202389) is used to determine the total protein concentration. The lysate is adjusted to contain 500 µg of total cellular protein in 100 µl before adding an equal volume of Electrophoresis Sample Buffer, 2X (sc-24945). Final concentration of product is 500 µg total protein in a final volume of 200 µl.

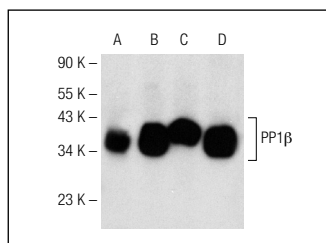
STORAGE

Store at -20° C; stable for one year from the date of shipment. Non-hazardous. No MSDS required. Minimize repeated freezing and thawing.

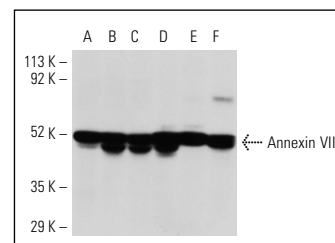
RESEARCH USE

For research use only, not for use in diagnostic procedures.

DATA



PP1β (A-6): sc-365678. Western blot analysis of PP1β expression in A-673 (A), SJRH30 (B), HeLa (C) and L8 (D) whole cell lysates.



Annexin VII (A-1): sc-17815. Western blot analysis of Annexin VII expression in WEHI-3 (A), RAW 264.7 (B), NIH/3T3 (C), AMJ2-C-11 (D), L8 (E) and C4 (F) whole cell lysates.

PROTOCOLS

See our web site at www.scbt.com or our catalog for detailed protocols and support products.