



# SZABO SCANDIC

Part of Europa Biosite

## Produktinformation



Forschungsprodukte & Biochemikalien



Zellkultur & Verbrauchsmaterial



Diagnostik & molekulare Diagnostik



Laborgeräte & Service

Weitere Information auf den folgenden Seiten!  
See the following pages for more information!



### Lieferung & Zahlungsart

siehe unsere [Liefer- und Versandbedingungen](#)

### Zuschläge

- Mindermengenzuschlag
- Trockeneiszuschlag
- Gefahrgutzuschlag
- Expressversand

### SZABO-SCANDIC HandelsgmbH

Quellenstraße 110, A-1100 Wien

T. +43(0)1 489 3961-0

F. +43(0)1 489 3961-7

[mail@szabo-scandic.com](mailto:mail@szabo-scandic.com)

[www.szabo-scandic.com](http://www.szabo-scandic.com)

[linkedin.com/company/szaboscandic](https://www.linkedin.com/company/szaboscandic) 

# SH-SY5Y Cell Lysate: sc-3812

## BACKGROUND

Santa Cruz Biotechnology offers a variety of whole cell lysates for use in combination with our antibodies as Western Blotting controls. SH-SY5Y Whole Cell Lysate is derived from the SH-SY5Y cell line using a procedure that ensures protein integrity and lot-to-lot reproducibility. All lysates are tested by Western Blotting to assure that each one contains the expected concentration and assortment of proteins. Numerous antibodies directed against a wide array of mammalian proteins are used to test each lysate.

SH-SY5Y cell line was established from a 4 year old female. They are reported to exhibit moderate levels of dopamine  $\beta$  hydroxylase activity.

## REFERENCES

- Biedler, J.L., Roffler-Tarlov, S., Schachner, M. and Freedman, L.S. 1978. Multiple neurotransmitter synthesis by human neuroblastoma cell lines and clones. *Cancer Res.* 38: 3751-3757.
- Ross, R.A., Spengler, B.A. and Biedler, J.L. 1983. Coordinate morphological and biochemical interconversion of human neuroblastoma cells. *J. Natl. Cancer Inst.* 71: 741-747.

## SOURCE

SH-SY5Y Whole Cell Lysate is derived from the SH-SY5Y cell line.

Organism:	<i>Homo sapiens</i> (human)
Organ:	Brain
Disease:	Neuroblastoma
Derived from metastatic site:	Bone marrow
Growth Properties:	Mixed, adherent epithelial and suspension

## PRODUCT

Each vial contains 500  $\mu$ g protein in 200  $\mu$ l of an SDS-PAGE Western Blotting buffer, which consists of 100  $\mu$ l RIPA Lysis Buffer and 100  $\mu$ l Electrophoresis Buffer, 2X.

## APPLICATIONS

SH-SY5Y Whole Cell Lysate is provided as a Western Blotting positive control. Recommended use is 50  $\mu$ g (20  $\mu$ l) per lane. Sample vial should be boiled once prior to use.

## PREPARATION METHOD

Cells are cultured with appropriate media conditions and allowed to reach a confluency of 75%. Cells are lysed using the RIPA Lysis Buffer System (sc-24948). The BCA Protein Assay Kit (sc-202389) is used to determine the total protein concentration. The lysate is adjusted to contain 500  $\mu$ g of total cellular protein in 100  $\mu$ l before adding an equal volume of Electrophoresis Sample Buffer, 2X (sc-24945). Final concentration of product is 500  $\mu$ g total protein in a final volume of 200  $\mu$ l.

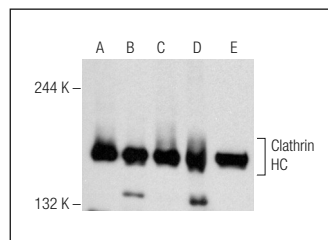
## STORAGE

Store at -20 $^{\circ}$  C; stable for one year from the date of shipment. Non-hazardous. No MSDS required. Minimize repeated freezing and thawing.

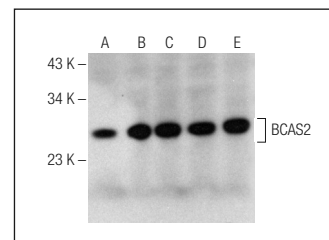
## RESEARCH USE

For research use only, not for use in diagnostic procedures.

## DATA



Clathrin HC (C-20): sc-6579. Western blot analysis of Clathrin HC expression in Jurkat (A), A-431 (B), SH-SY5Y (C) and U-2 OS (D) whole cell lysates and human testis tissue extract (E).



BCAS2 (F-5): sc-376554. Western blot analysis of BCAS2 expression in HEK293 whole cell lysate (A) and SH-SY5Y (B), MCF7 (C), HeLa (D) and K-562 (E) nuclear extracts.

## PROTOCOLS

See our web site at [www.scbt.com](http://www.scbt.com) or our catalog for detailed protocols and support products.