



SZABO SCANDIC

Part of Europa Biosite

Produktinformation



Forschungsprodukte & Biochemikalien



Zellkultur & Verbrauchsmaterial



Diagnostik & molekulare Diagnostik



Laborgeräte & Service

Weitere Information auf den folgenden Seiten!
See the following pages for more information!



Lieferung & Zahlungsart

siehe unsere [Liefer- und Versandbedingungen](#)

Zuschläge

- Mindermengenzuschlag
- Trockeneiszuschlag
- Gefahrgutzuschlag
- Expressversand

SZABO-SCANDIC HandelsgmbH

Quellenstraße 110, A-1100 Wien

T. +43(0)1 489 3961-0

F. +43(0)1 489 3961-7

mail@szabo-scandic.com

www.szabo-scandic.com

[linkedin.com/company/szaboscandic](https://www.linkedin.com/company/szaboscandic) 

m-IgGκ BP-FITC: sc-516140

BACKGROUND

Mouse IgGκ light chain binding protein is a strongly recommended alternative to conventional anti-mouse IgG secondary antibodies for immunofluorescence (IF) and flow cytometry (FCM) signal enhancement. Mouse IgGκ light chain binding protein is a highly specific detection reagent that provides strong signal with minimal background and virtually complete elimination of lot-to-lot variation associated with conventionally generated secondary antibodies. Mouse IgGκ light chain binding protein (m-IgGκ BP) conjugated to fluorescein isothiocyanate (FITC) is suitable for binding to mouse IgGκ light chain immunoglobulins, comprising a vast majority of mouse monoclonal primary antibodies; not suitable for use with mouse monoclonal IgGλ light chain primary antibodies. Fluorescein isothiocyanate (FITC) is a green fluorophore that is very popular for use in microscopy and flow cytometry research applications.

SOURCE

m-IgGκ BP-FITC is a purified recombinant mouse IgGκ light chain binding protein conjugated to fluorescein isothiocyanate (FITC).

PRODUCT

Each vial contains 200 μg mouse IgGκ binding protein-FITC in 0.5 ml of PBS containing 0.1% gelatin and 0.1% sodium azide.

APPLICATIONS

m-IgGκ BP-FITC is recommended for detection of mouse IgGκ light chain by immunofluorescence (starting dilution 1:50, dilution range 1:50-1:200) and flow cytometry (0.5-1 μg per 1 x 10⁶ cells). Optimal dilution to be determined by titration.

FITC excitation/emission spectrum peak wavelengths: 495 nm/519 nm

RECOMMENDED SUPPORT PRODUCTS

- CrystalCruz[®] Cover Glasses, 22 x 50 mm, precleaned: sc-24975
- PBS (Phosphate Buffered Saline), powder, 1 packet: sc-24947
- Formaldehyde, 37% formaldehyde solution, 25 ml: sc-203049
- Hydrogen Peroxide, 30% solution, 100 ml: sc-203336
- FCM Lysing solution: sc-3621
- FCM Fixation Buffer: sc-3622
- FCM Permeabilization Buffer: sc-3623
- FCM Wash Buffer: sc-3624
- Intracellular FCM System: sc-45063

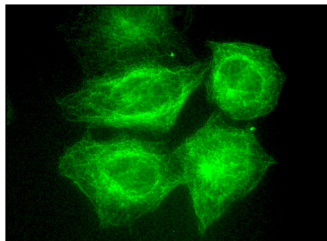
STORAGE

Store at 4° C, ****DO NOT FREEZE****. Stable for one year from the date of shipment. Non-hazardous. No MSDS required.

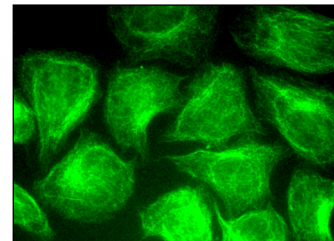
RESEARCH USE

For research use only, not for use in diagnostic procedures.

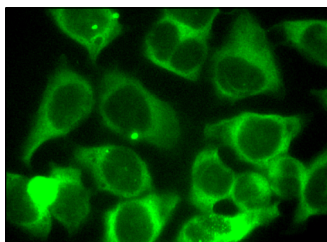
DATA



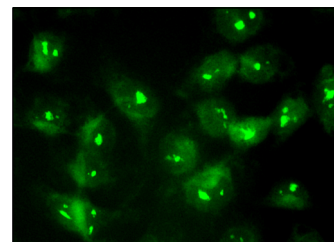
m-IgGκ BP-FITC: sc-516140. Immunofluorescence detection of α-Tubulin in formalin-fixed HeLa cells showing cytoskeletal localization. Antibody tested: α-Tubulin (B-7): sc-5286.



m-IgGκ BP-FITC: sc-516140. Immunofluorescence detection of SH3D19 in formalin-fixed HeLa cells showing cytoplasmic and membrane localization. Antibody tested: SH3D19 (G-6): sc-377282.



m-IgGκ BP-FITC: sc-516140. Immunofluorescence detection of GAPDH in methanol-fixed HeLa cells showing cytoplasmic localization. Antibody tested: GAPDH (D-6): sc-166545.



m-IgGκ BP-FITC: sc-516140. Immunofluorescence detection of BOP1 in methanol-fixed HeLa cells showing nucleolar and nuclear localization. Antibody tested: BOP1 (E-1): sc-390672.

PROTOCOLS

See our web site at www.scbt.com or our catalog for detailed protocols and support products.