



# SZABO SCANDIC

Part of Europa Biosite

## Produktinformation



Forschungsprodukte & Biochemikalien



Zellkultur & Verbrauchsmaterial



Diagnostik & molekulare Diagnostik



Laborgeräte & Service

Weitere Information auf den folgenden Seiten!  
See the following pages for more information!



### Lieferung & Zahlungsart

siehe unsere [Liefer- und Versandbedingungen](#)

### Zuschläge

- Mindermengenzuschlag
- Trockeneiszuschlag
- Gefahrgutzuschlag
- Expressversand

### SZABO-SCANDIC HandelsgmbH

Quellenstraße 110, A-1100 Wien

T. +43(0)1 489 3961-0

F. +43(0)1 489 3961-7

[mail@szabo-scandic.com](mailto:mail@szabo-scandic.com)

[www.szabo-scandic.com](http://www.szabo-scandic.com)

[linkedin.com/company/szaboscandic](https://www.linkedin.com/company/szaboscandic) 

# m-IgGκ BP-CFL 488: sc-516176

## BACKGROUND

Mouse IgGκ light chain binding protein (m-IgGκ BP) conjugated to CruzFluor™ 488 is a strongly recommended alternative to conventional anti-mouse IgG secondary antibodies for Western blotting (WB), immunofluorescence (IF) and flow cytometry (FCM) signal enhancement. Mouse IgGκ light chain binding protein is a highly specific detection reagent that provides strong signal with minimal background and virtually complete elimination of lot-to-lot variation associated with conventionally generated secondary antibodies. Mouse IgGκ light chain binding protein (m-IgGκ BP) is suitable for binding to mouse IgGκ light chain immunoglobulins, comprising a vast majority of mouse monoclonal primary antibodies; not suitable for use with mouse monoclonal IgGλ light chain primary antibodies. CruzFluor™ 488 (CFL 488) is a green fluorescent dye that is an excellent substitute for AlexaFluor® 488, offering comparable photostability and the ability to resist protein quenching. Suitable for use with RGB imaging systems, such as Invitrogen/iBright and other comparable systems.

## SOURCE

m-IgGκ BP-CFL 488 is a purified recombinant mouse IgGκ light chain binding protein conjugated to CruzFluor™ 488 (CFL 488).

## PRODUCT

Each vial contains 200 µg mouse IgGκ binding protein-CFL 488 in 0.5 ml of PBS containing 0.1% gelatin and 0.1% sodium azide.

## APPLICATIONS

m-IgGκ BP-CFL 488 is recommended for detection of mouse IgGκ light chain by RGB Western Blotting (starting dilution: 1:1000, dilution range: 1:500-1:2000), immunofluorescence (starting dilution 1:50, dilution range 1:50-1:200) and flow cytometry (0.5-1 µg per 1 x 10<sup>6</sup> cells). Optimal dilution to be determined by titration.

## RECOMMENDED SUPPORT PRODUCTS

- CrystalCruz® Cover Glasses, 22 x 50 mm, precleaned: sc-24975
- PBS (Phosphate Buffered Saline), powder, 1 packet: sc-24947
- Formaldehyde, 37% formaldehyde solution, 25 ml: sc-203049
- Hydrogen Peroxide, 30% solution, 100 ml: sc-203336
- FCM Lysing solution: sc-3621
- FCM Fixation Buffer: sc-3622
- FCM Permeabilization Buffer: sc-3623
- FCM Wash Buffer: sc-3624
- Intracellular FCM System: sc-45063

## RESEARCH USE

For research use only, not for use in diagnostic procedures.

## PROTOCOLS

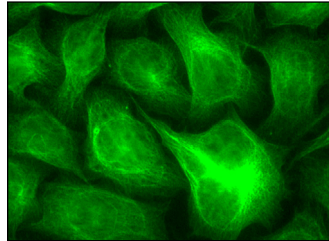
See our web site at [www.scbt.com](http://www.scbt.com) for detailed protocols and support products.

Alexa Fluor® is a trademark of Molecular Probes, Inc., Oregon, USA

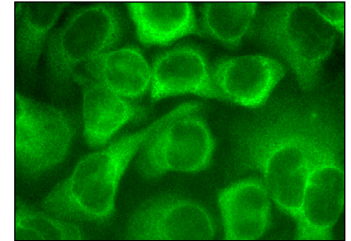
## STORAGE

Store at 4° C, \*\*DO NOT FREEZE\*\*. Stable for one year from the date of shipment. Non-hazardous. No MSDS required.

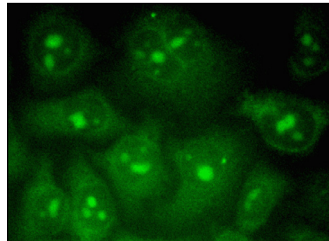
## DATA



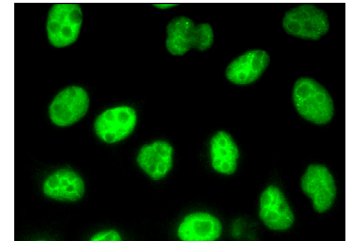
m-IgGκ BP-CFL 488: sc-516176. Immunofluorescence detection of α Tubulin in formalin-fixed HeLa cells showing cytoskeletal localization. Antibody tested: α Tubulin (B-7): sc-5286.



m-IgGκ BP-CFL 488: sc-516176. Immunofluorescence detection of ProRS in formalin-fixed HeLa cells showing cytoplasmic localization. Antibody tested: ProRS (A-2): sc-393505.



m-IgGκ BP-CFL 488: sc-516176. Immunofluorescence detection of ProRS in formalin-fixed HeLa cells showing cytoplasmic localization. Antibody tested: ProRS (A-2): sc-393505.



m-IgGκ BP-CFL 488: sc-516176. Immunofluorescence detection of ProRS in formalin-fixed HeLa cells showing cytoplasmic localization. Antibody tested: ProRS (A-2): sc-393505.

## CRUZFLUOR™ SPECTRAL PROPERTIES

PRODUCT	CAT. #	EXCITATION MAXIMUM	EMISSION MAXIMUM
m-IgGκ BP-CFL 488	sc-516176	488 nm	514 nm
m-IgGλ BP-CFL 488	sc-516190		
m-IgGκ BP-CFL 555	sc-516177	556 nm	569 nm
m-IgGλ BP-CFL 555	sc-516191		
m-IgGκ BP-CFL 594	sc-516178	587 nm	603 nm
m-IgGλ BP-CFL 594	sc-516192		
m-IgGκ BP-CFL 647	sc-516179	654 nm	669 nm
m-IgGλ BP-CFL 647	sc-516193		
m-IgGκ BP-CFL 680	sc-516180	683 nm	700 nm
m-IgGλ BP-CFL 680	sc-516194		
m-IgGκ BP-CFL 790	sc-516181	786 nm	811 nm
m-IgGλ BP-CFL 790	sc-516195		