



SZABO SCANDIC

Part of Europa Biosite

Produktinformation



Forschungsprodukte & Biochemikalien



Zellkultur & Verbrauchsmaterial



Diagnostik & molekulare Diagnostik



Laborgeräte & Service

Weitere Information auf den folgenden Seiten!
See the following pages for more information!



Lieferung & Zahlungsart

siehe unsere [Liefer- und Versandbedingungen](#)

Zuschläge

- Mindermengenzuschlag
- Trockeneiszuschlag
- Gefahrgutzuschlag
- Expressversand

SZABO-SCANDIC HandelsgmbH

Quellenstraße 110, A-1100 Wien

T. +43(0)1 489 3961-0

F. +43(0)1 489 3961-7

mail@szabo-scandic.com

www.szabo-scandic.com

[linkedin.com/company/szaboscandic](https://www.linkedin.com/company/szaboscandic) 

m-IgG λ BP-CFL 555: sc-516191

BACKGROUND

Mouse IgG λ light chain binding protein (m-IgG λ BP) conjugated to CruzFluor™ 555 is a strongly recommended alternative to conventional anti-mouse IgG secondary antibodies for Western blotting (WB), immunofluorescence (IF) and flow cytometry (FCM) signal enhancement. Mouse IgG λ light chain binding protein is a highly specific detection reagent that provides strong signal with minimal background and virtually complete elimination of lot-to-lot variation associated with conventionally generated secondary antibodies. Mouse IgG λ light chain binding protein (m-IgG λ BP) is suitable for binding to mouse IgG λ light chain immunoglobulins; not suitable for use with mouse monoclonal IgG κ light chain primary antibodies. CruzFluor™ 555 (CFL 555) is an orange fluorescent dye that is an excellent substitute for AlexaFluor® 555, offering comparable photostability and the ability to resist protein quenching. Suitable for use with RGB imaging systems, such as Invitrogen/iBright and other comparable systems.

SOURCE

m-IgG λ BP-CFL 555 is a purified recombinant mouse IgG λ light chain binding protein conjugated to CruzFluor™ 555 (CFL 555).

PRODUCT

Each vial contains 200 μ g mouse IgG λ binding protein-CFL 555 in 0.5 ml of PBS containing 0.1% gelatin and 0.1% sodium azide.

APPLICATIONS

m-IgG λ BP-CFL 555 is recommended for detection of mouse IgG λ light chain by RGB Western Blotting (starting dilution: 1:1000, dilution range: 1:500-1:2000), immunofluorescence (starting dilution 1:50, dilution range 1:50-1:200) and flow cytometry (0.5-1 μ g per 1 x 10⁶ cells). Optimal dilution to be determined by titration.

RECOMMENDED SUPPORT PRODUCTS

- CrystalCruz® Cover Glasses, 22 x 50 mm, precleaned: sc-24975
- PBS (Phosphate Buffered Saline), powder, 1 packet: sc-24947
- Formaldehyde, 37% formaldehyde solution, 25 ml: sc-203049
- Hydrogen Peroxide, 30% solution, 100 ml: sc-203336
- FCM Lysing solution: sc-3621
- FCM Fixation Buffer: sc-3622
- FCM Permeabilization Buffer: sc-3623
- FCM Wash Buffer: sc-3624
- Intracellular FCM System: sc-45063

RESEARCH USE

For research use only, not for use in diagnostic procedures.

PROTOCOLS

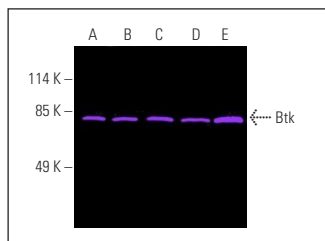
See our web site at www.scbt.com for detailed protocols and support products.

Alexa Fluor® is a trademark of Molecular Probes, Inc., Oregon, USA

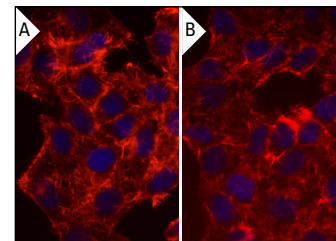
STORAGE

Store at 4° C, ****DO NOT FREEZE****. Stable for one year from the date of shipment. Non-hazardous. No MSDS required.

DATA



Btk (E-9): sc-28387. Fluorescent western blot analysis of Btk expression in U-698-M (A), MEG-01 (B), BJAB (C), NAMALWA (D) and HEL 92.1.7 (E) whole cell lysates. Blocked with UltraCruz® Blocking Reagent: sc-516214. Detection reagent used: m-IgG λ BP-CFL 555: sc-516191.



PPP2R4 (C-10): sc-398242. Immunofluorescence detection of PPP2R4 in formalin-fixed HeLa cells showing cytoplasmic and membrane localization and nuclear DAPI counterstain (A). T2R3 (E-12): sc-398489. Immunofluorescence detection of T2R3 in formalin-fixed HeLa cells showing membrane localization and nuclear DAPI counterstain (B). Detection reagent used: m-IgG λ BP-CFL 555: sc-516191.

CRUZFLUOR™ SPECTRAL PROPERTIES

PRODUCT	CAT. #	EXCITATION MAXIMUM	EMISSION MAXIMUM
m-IgG κ BP-CFL 488	sc-516176	488 nm	514 nm
m-IgG λ BP-CFL 488	sc-516190		
m-IgG κ BP-CFL 555	sc-516177	556 nm	569 nm
m-IgG λ BP-CFL 555	sc-516191		
m-IgG κ BP-CFL 594	sc-516178	587 nm	603 nm
m-IgG λ BP-CFL 594	sc-516192		
m-IgG κ BP-CFL 647	sc-516179	654 nm	669 nm
m-IgG λ BP-CFL 647	sc-516193		
m-IgG κ BP-CFL 680	sc-516180	683 nm	700 nm
m-IgG λ BP-CFL 680	sc-516194		
m-IgG κ BP-CFL 790	sc-516181	786 nm	811 nm
m-IgG λ BP-CFL 790	sc-516195		