



# SZABO SCANDIC

Part of Europa Biosite

## Produktinformation



Forschungsprodukte & Biochemikalien



Zellkultur & Verbrauchsmaterial



Diagnostik & molekulare Diagnostik



Laborgeräte & Service

Weitere Information auf den folgenden Seiten!  
See the following pages for more information!



### Lieferung & Zahlungsart

siehe unsere [Liefer- und Versandbedingungen](#)

### Zuschläge

- Mindermengenzuschlag
- Trockeneiszuschlag
- Gefahrgutzuschlag
- Expressversand

### SZABO-SCANDIC HandelsgmbH

Quellenstraße 110, A-1100 Wien

T. +43(0)1 489 3961-0

F. +43(0)1 489 3961-7

[mail@szabo-scandic.com](mailto:mail@szabo-scandic.com)

[www.szabo-scandic.com](http://www.szabo-scandic.com)

[linkedin.com/company/szaboscandic](https://www.linkedin.com/company/szaboscandic) 

# m-IgG $\lambda$ BP-CFL 790: sc-516195

## BACKGROUND

Mouse IgG $\lambda$  light chain binding protein (m-IgG $\lambda$  BP) conjugated to CruzFluor™ 790 is a strongly recommended alternative to conventional anti-mouse IgG secondary antibodies for Western blotting (WB), immunofluorescence (IF) and flow cytometry (FCM) signal enhancement. Mouse IgG $\lambda$  light chain binding protein is a highly specific detection reagent that provides strong signal with minimal background and virtually complete elimination of lot-to-lot variation associated with conventionally generated secondary antibodies. Mouse IgG $\lambda$  light chain binding protein (m-IgG $\lambda$  BP) is suitable for binding to mouse IgG $\lambda$  light chain immunoglobulins; not suitable for use with mouse monoclonal IgG $\kappa$  light chain primary antibodies. CruzFluor™ 790 (CFL 790) is a far-infrared fluorescent dye that is an excellent substitute for AlexaFluor® 790 or Cy5®, offering comparable photostability and the ability to resist protein quenching. Suitable for use with Near-Infrared (NIR) imaging systems, such as LI-COR/Odyssey, Invitrogen/iBright and other comparable systems..

## SOURCE

m-IgG $\lambda$  BP-CFL 790 is a purified recombinant mouse IgG $\lambda$  light chain binding protein conjugated to CruzFluor™ 790 (CFL 790).

## PRODUCT

Each vial contains 200  $\mu$ g mouse IgG $\lambda$  binding protein-CFL 790 in 0.5 ml of PBS containing 0.1% gelatin and 0.1% sodium azide.

## APPLICATIONS

m-IgG $\lambda$  BP-CFL 790 is recommended for detection of mouse IgG $\lambda$  light chain by NIR Western Blotting (starting dilution: 1:1000, dilution range: 1:1000-1:10000) and immunofluorescence (starting dilution 1:50, dilution range 1:50-1:200) and flow cytometry (0.5-1  $\mu$ g per 1 x 10<sup>6</sup> cells). Optimal dilution to be determined by titration.

For Western Blotting using tissue extracts and m-IgG $\lambda$  BP-CFL 790, we strongly recommend subtracting endogenous immunoglobulins from extracts with Protein G PLUS-Agarose Reagent: sc-2002, to prevent Western Blotting interference when detecting proteins of approximately 25 kDa in size.

## STORAGE

Store at 4° C, \*\*DO NOT FREEZE\*\*. Stable for one year from the date of shipment. Non-hazardous. No MSDS required.

## RESEARCH USE

For research use only, not for use in diagnostic procedures.

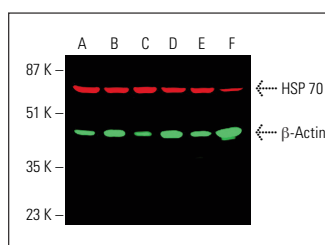
## PROTOCOLS

See our web site at [www.scbt.com](http://www.scbt.com) for detailed protocols and support products.

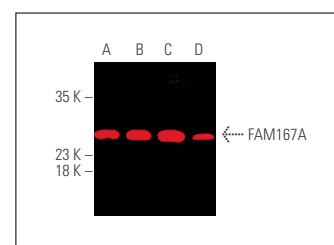
## RECOMMENDED SUPPORT PRODUCTS

- RIPA Lysis Buffer, 50 ml, cell lysis buffer with protease inhibitors: sc-24948
- Electrophoresis Sample Buffer, 2X, 25 ml, reducing buffer: sc-24945
- Running Buffer, 10X, 1 L, TRIS-Glycine WB running buffer, pH 8.3: sc-24949
- Towbin, with SDS, 10X, 1 L, WB transfer buffer pH 8.3: sc-24954
- TBS Blotto A, lyophilized powder in single-use bottle: sc-2333
- UltraCruz® PVDF Transfer Membrane, 0.45  $\mu$ m, 30 cm x 3 m roll: sc-3723
- UltraCruz® Nitrocellulose Pure Transfer Membrane, 0.22  $\mu$ m, 30 cm x 3 m roll: sc-3718
- UltraCruz® Gel Incubation Trays, 100 per pack: sc-201755 (blue), sc-201756 (green), sc-201757 (pink), sc-201758 (yellow), sc-201759 (orange)

## DATA



Simultaneous infrared western blot analysis of  $\beta$ -Actin expression, detected with  $\beta$ -Actin (C4): sc-47778 and m-IgG $\kappa$  BP-CFL 680: sc-516180 and HSP 70/HSC 70 expression, detected with HSP 70/HSC 70 (W27): sc-24 and m-IgG $\lambda$  BP-CFL 790: sc-516195 in HeLa (A), DU 145 (B), MCF7 (C), MDA-MB-231 (D), HCT-116 (E) and HUV-EC-C (F) whole cell lysates.



FAM167A (G-3): sc-393999. Near-infrared western blot analysis of FAM167A expression in Hep G2 (A), U-87 MG (B), SH-SY5Y (C) and Neuro-2A (D) whole cell lysates. Detection reagent used: m-IgG $\lambda$  BP-CFL 790: sc-516195.

## CRUZFLUOR™ SPECTRAL PROPERTIES

PRODUCT	CAT. #	EXCITATION MAXIMUM	EMISSION MAXIMUM
m-IgG $\kappa$ BP-CFL 488	sc-516176	488 nm	514 nm
m-IgG $\lambda$ BP-CFL 488	sc-516190		
m-IgG $\kappa$ BP-CFL 555	sc-516177	556 nm	569 nm
m-IgG $\lambda$ BP-CFL 555	sc-516191		
m-IgG $\kappa$ BP-CFL 594	sc-516178	587 nm	603 nm
m-IgG $\lambda$ BP-CFL 594	sc-516192		
m-IgG $\kappa$ BP-CFL 647	sc-516179	654 nm	669 nm
m-IgG $\lambda$ BP-CFL 647	sc-516193		
m-IgG $\kappa$ BP-CFL 680	sc-516180	683 nm	700 nm
m-IgG $\lambda$ BP-CFL 680	sc-516194		
m-IgG $\kappa$ BP-CFL 790	sc-516181	786 nm	811 nm
m-IgG $\lambda$ BP-CFL 790	sc-516195		