



SZABO SCANDIC

Part of Europa Biosite

Produktinformation



Forschungsprodukte & Biochemikalien



Zellkultur & Verbrauchsmaterial



Diagnostik & molekulare Diagnostik



Laborgeräte & Service

Weitere Information auf den folgenden Seiten!
See the following pages for more information!



Lieferung & Zahlungsart

siehe unsere [Liefer- und Versandbedingungen](#)

Zuschläge

- Mindermengenzuschlag
- Trockeneiszuschlag
- Gefahrgutzuschlag
- Expressversand

SZABO-SCANDIC HandelsgmbH

Quellenstraße 110, A-1100 Wien

T. +43(0)1 489 3961-0

F. +43(0)1 489 3961-7

mail@szabo-scandic.com

www.szabo-scandic.com

[linkedin.com/company/szaboscandic](https://www.linkedin.com/company/szaboscandic) 

mouse anti-goat IgG-CFL 555: sc-516242

BACKGROUND

Santa Cruz Biotechnology's high quality, well characterized monoclonal secondary antibodies are available conjugated to either an enzyme, biotin or fluorophore for use in a variety of antibody-based applications, including Western blotting, immunostaining and flow cytometry. Santa Cruz secondary antibodies are commonly affinity purified against immobilized whole IgG isotypes, including IgG₁, IgG_{2a}, IgG_{2b}, IgG₃ and IgG₄. Monoclonal secondary antibodies are available conjugated to HRP for Western blotting (WB) and immunohistochemistry (IHC); (CM) or Cruz Marker form of HRP conjugated secondary antibodies are suitable for use with our Cruz Marker™ molecular weight standards; FITC (fluorescein isothiocyanate), PE (phycoerythrin), R (TRITC: tetramethyl rhodamine isothiocyanate), TR (Texas Red[®]), PerCP (peridinin chlorophyll protein complex), PerCP-Cy5.5 (peridinin chlorophyll protein complex with cyanin-5.5), and CruzFluor™ (488, 555, 594 and 647) for immunofluorescence (IF), immunohistochemistry (IHC) and flow cytometry (FCM); B (biotin) for immunohistochemistry (IHC); AP (alkaline phosphatase) for Western blotting (WB); and CruzFluor[®] 680 and 790 for near-infrared (NIR) Western blotting (WB), immunofluorescence (IF), immunohistochemistry (IHC) and flow cytometry (FCM).

SOURCE

mouse anti-goat IgG-CFL 555 is a pre-adsorbed, affinity purified secondary antibody raised in mouse against goat IgG and conjugated to CruzFluor™ 555 (CFL 555).

PRODUCT

Each vial contains 200 µg mouse IgG (pre-adsorbed with human IgG) in 0.5 ml of PBS containing 0.1% gelatin and 0.1% sodium azide.

APPLICATIONS

mouse anti-goat IgG-CFL 555 is recommended for detection of goat IgG by RGB Western blotting (starting dilution: 1:100, dilution range: 1:100-1:400), immunofluorescence staining (starting dilution: 1:100, dilution range: 1:100-1:400), immunohistochemical staining (starting dilution: 1:100, dilution range: 1:100-1:400) and flow cytometry (0.5-1 µg per 1 x 10⁶ cells). Optimal dilution to be determined by titration.

STORAGE

Store at 4° C, ****DO NOT FREEZE****. Stable for one year from the date of shipment. Non-hazardous. No MSDS required.

PROTOCOLS

See our web site at www.scbt.com for detailed protocols and support products.

RECOMMENDED SUPPORT PRODUCTS

A. TISSUE CULTURE CELLS

- CrystalCruz™ Cover Glasses, 22 x 50 mm, precleaned: sc-24975
- PBS (Phosphate Buffered Saline), powder, 1 packet: sc-24947
- Hydrogen Peroxide, 30% solution, 100 ml: sc-203336

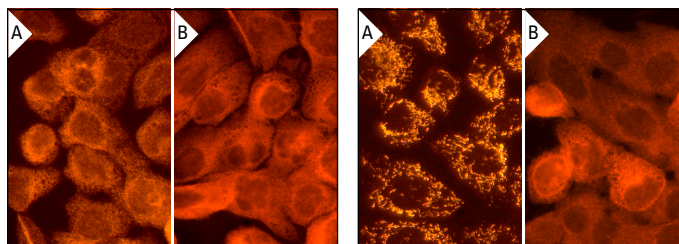
B. FROZEN TISSUE SECTIONS

- Organo/Limonene Mount, non-toxic alternative to Permount, 100 ml: sc-45087
- UltraCruz[®] Mounting Medium, aqueous-based, 10 ml: sc-24941
- ImmunoHistoMount, aqueous-based mounting medium, 30 ml: sc-45086
- Immuno In Situ Mount, for use with *in situ* hybridization, 30 ml: sc-45088

C. FORMALIN-FIXED, PARAFFIN-EMBEDDED TISSUE SECTIONS

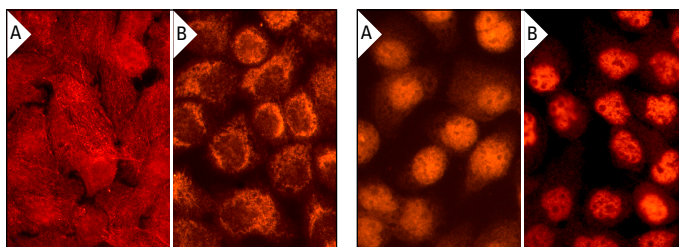
- Paraffin, for the preparation of tissue samples for staining, 500 g: sc-286633
- Xylenes, mixed isomers with ethylbenzene, 500 ml: sc-237422
- Hematoxylin, Gill's Formulation #2; nuclear counter stain, 100 ml: sc-24973

DATA



Sel-1L (T-17): sc-48081. Immunofluorescence staining of formalin-fixed A-431 cells showing cytoplasmic localization (A). MAP-4 (K-13): sc-46385. Immunofluorescence staining of formalin-fixed A-431 cells showing cytoplasmic and membrane localization (B). Detection reagent used: mouse anti-goat IgG-CFL 555: sc-516242.

HSP 60 (K-19): sc-1722. Immunofluorescence staining of formalin-fixed A-431 cells showing mitochondrial localization (A). VPS16 (C-17): sc-86939. Immunofluorescence staining of formalin-fixed A-431 cells showing cytoplasmic and membrane localization (B). Detection reagent used: mouse anti-goat IgG-CFL 555: sc-516242.



β Tubulin (aC-18): sc-12841. Immunofluorescence staining of formalin-fixed A-431 cells showing cytoskeleton localization (A). MFF (T-14): sc-168593. Immunofluorescence staining of formalin-fixed A-431 cells showing mitochondrial localization (B). Detection reagent used: mouse anti-goat IgG-CFL 555: sc-516242.

DDX56 (N-13): sc-104189. Immunofluorescence staining of formalin-fixed A-431 cells showing nuclear and membrane localization (A). MRE11 (C-16): sc-5859. Immunofluorescence staining of formalin-fixed A-431 cells showing nuclear localization (B). Detection reagent used: mouse anti-goat IgG-CFL 555: sc-516242.

RESEARCH USE

For research use only, not for use in diagnostic procedures.