



# SZABO SCANDIC

Part of Europa Biosite

## Produktinformation



Forschungsprodukte & Biochemikalien



Zellkultur & Verbrauchsmaterial



Diagnostik & molekulare Diagnostik



Laborgeräte & Service

Weitere Information auf den folgenden Seiten!  
See the following pages for more information!



### Lieferung & Zahlungsart

siehe unsere [Liefer- und Versandbedingungen](#)

### Zuschläge

- Mindermengenzuschlag
- Trockeneiszuschlag
- Gefahrgutzuschlag
- Expressversand

### SZABO-SCANDIC HandelsgmbH

Quellenstraße 110, A-1100 Wien

T. +43(0)1 489 3961-0

F. +43(0)1 489 3961-7

[mail@szabo-scandic.com](mailto:mail@szabo-scandic.com)

[www.szabo-scandic.com](http://www.szabo-scandic.com)

[linkedin.com/company/szaboscandic](https://www.linkedin.com/company/szaboscandic)

# mouse anti-rabbit IgG-CFL 594: sc-516250

## BACKGROUND

Santa Cruz Biotechnology offers a wide variety of control immunoglobulin and control sera for a large selection of species, including mouse, rabbit, goat, chicken, rat, hamster, canine, guinea pig and sheep. Control immunoglobulin and immunoglobulin conjugates are useful negative controls. Normal sera is offered to be used as blocking reagents. Santa Cruz Biotechnology offers affinity purified normal immunoglobulins and immunoglobulin conjugates for use as negative controls in applications including flow cytometry, immunohistochemistry, immunofluorescence, Western Blotting and immunoprecipitation. Agarose (AC) conjugated IgGs are provided for immunoprecipitation; horseradish peroxidase (HRP) conjugates are provided for Western Blotting and immunohistochemistry; and Biotin (B) conjugates are provided for immunohistochemistry. A broad range of fluorescent conjugated controls are also available for use in flow cytometry and immunofluorescence applications. Most control immunoglobulins are available as unconjugated controls or as FITC (fluorescein isothiocyanate), PE (phycoerythrin), PE-Cy5 (phycoerythrin-Cy5), PE-Cy7 (phycoerythrin-Cy7), APC (allophycocyanin) and APC-Cy7 (allophycocyanin-Cy7) conjugates. Additional conjugates include Alexa Fluor® 488, Alexa Fluor® 647, Alexa Fluor® 405, PerCP (peridinin chlorophyll protein complex) and PerCP-Cy5.5 (peridinin chlorophyll protein complex-Cy 5.5). Isotype specific control immunoglobulins include classes such as mouse IgG<sub>1</sub>, IgG<sub>2a</sub>, IgG<sub>2b</sub>, IgG<sub>3</sub>, IgM and IgA, rat IgG<sub>1</sub>, IgG<sub>2a</sub>, IgG<sub>2b</sub> and IgM, Armenian hamster IgG, and both goat and rabbit IgG.

## SOURCE

mouse anti-rabbit IgG-CFL 594 is a pre-adsorbed, affinity purified secondary antibody raised in goat against rabbit IgG and conjugated to CruzFluor™ 594 (CFL 594).

## PRODUCT

Each vial contains 200 µg mouse IgG (pre-adsorbed with human IgG) in 0.5 ml of PBS containing 0.1% gelatin and 0.1% sodium azide.

## APPLICATIONS

mouse anti-rabbit IgG-CFL 594 is recommended for detection of rabbit IgG by RGB Western Blotting (starting dilution: 1:100-1:400), immunofluorescence staining (starting dilution: 1:100, dilution range: 1:100-1:400), immunohistochemical staining (starting dilution: 1:100, dilution range: 1:100-1:400) and flow cytometry (0.5-1 µg per 1 × 10<sup>6</sup> cells). Optimal dilution to be determined by titration.

## STORAGE

Store at 4° C, **\*\*DO NOT FREEZE\*\***. Stable for one year from the date of shipment. Non-hazardous. No MSDS required.

## PROTOCOLS

See our web site at [www.scbt.com](http://www.scbt.com) for detailed protocols and support products.

## RECOMMENDED SUPPORT PRODUCTS

### A. TISSUE CULTURE CELLS

- CrystalCruz™ Cover Glasses, 22 x 50 mm, precleaned: sc-24975
- PBS (Phosphate Buffered Saline), powder, 1 packet: sc-24947
- Hydrogen Peroxide, 30% solution, 100 ml: sc-203336

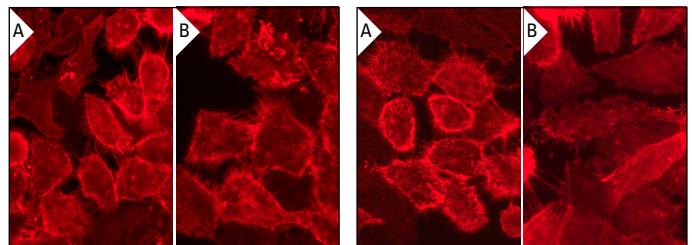
### B. FROZEN TISSUE SECTIONS

- Organo/Limonene Mount, non-toxic alternative to Permount, 100 ml: sc-45087
- UltraCruz® Mounting Medium, aqueous-based, 10 ml: sc-24941
- ImmunoHistoMount, aqueous-based mounting medium, 30 ml: sc-45086
- Immuno In Situ Mount, for use with *in situ* hybridization, 30 ml: sc-45088

### C. FORMALIN-FIXED, PARAFFIN-EMBEDDED TISSUE SECTIONS

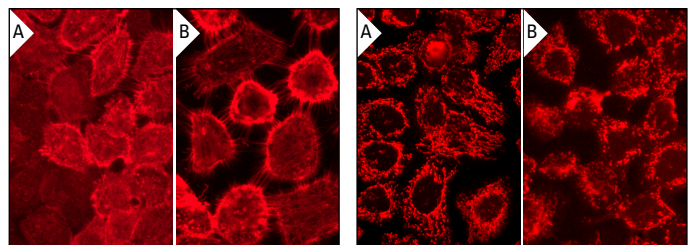
- Paraffin, for the preparation of tissue samples for staining, 500 g: sc-286633
- Xylenes, mixed isomers with ethylbenzene, 500 ml: sc-237422
- Hematoxylin, Gill's Formulation #2; nuclear counter stain, 100 ml: sc-24973

## DATA



C3orf39 (N-17): sc-99803. Immunofluorescence staining of formalin-fixed A-431 cells showing membrane localization (A). MCF2L2 (N-14): sc-103037. Immunofluorescence staining of formalin-fixed A-431 cells showing membrane localization (B). Detection reagent used: mouse anti-rabbit IgG-CFL 594: sc-516250.

CCDC108 (E-12): sc-137363. Immunofluorescence staining of formalin-fixed A-431 cells showing membrane localization (A). TDE2L (E-18): sc-138678. Immunofluorescence staining of formalin-fixed A-431 cells showing membrane localization (B). Detection reagent used: mouse anti-rabbit IgG-CFL 594: sc-516250.



ALG11 (E-17): sc-83969. Immunofluorescence staining of formalin-fixed A-431 cells showing membrane localization (A). TEX30 (I-20): sc-84017. Immunofluorescence staining of formalin-fixed A-431 cells showing membrane localization (B). Detection reagent used: mouse anti-rabbit IgG-CFL 594: sc-516250.

LRP130 (H-300): sc-66844. Immunofluorescence staining of formalin-fixed A-431 cells showing mitochondrial localization (A). LRP130 (M-300): sc-66845. Immunofluorescence staining of formalin-fixed A-431 cells showing mitochondrial localization (B). Detection reagent used: mouse anti-rabbit IgG-CFL 594: sc-516250.

## RESEARCH USE

For research use only, not for use in diagnostic procedures.