



SZABO SCANDIC

Part of Europa Biosite

Produktinformation



Forschungsprodukte & Biochemikalien



Zellkultur & Verbrauchsmaterial



Diagnostik & molekulare Diagnostik



Laborgeräte & Service

Weitere Information auf den folgenden Seiten!
See the following pages for more information!



Lieferung & Zahlungsart

siehe unsere [Liefer- und Versandbedingungen](#)

Zuschläge

- Mindermengenzuschlag
- Trockeneiszuschlag
- Gefahrgutzuschlag
- Expressversand

SZABO-SCANDIC HandelsgmbH

Quellenstraße 110, A-1100 Wien

T. +43(0)1 489 3961-0

F. +43(0)1 489 3961-7

mail@szabo-scandic.com

www.szabo-scandic.com

[linkedin.com/company/szaboscandic](https://www.linkedin.com/company/szaboscandic) 

G_{α gust} (B-3): sc-518163

BACKGROUND

Heterotrimeric G proteins function to relay information from cell surface receptors to intracellular effectors. Each of a very broad range of receptors specifically detects an extracellular stimulus (a photon, pheromone, odorant, hormone or neurotransmitter) while the effectors (e.g., adenylyl cyclase), which act to generate one or more intracellular messengers, are less numerous. In mammals, G protein α , β and γ polypeptides are encoded by at least 16, 4 and 7 genes, respectively. Most interest in G proteins has been focused on their α subunits, since these proteins bind and hydrolyze GTP and most obviously regulate the activity of the best studied effectors. Four distinct classes of G_α subunits have been identified; these include G_s, G_i, G_q and G_{α 12/13}. Gustducin has been identified as a taste-cell-specific G protein within the G_i subclass of G_α subunit proteins that is most closely related to the transducins and exclusively expressed in taste buds.

REFERENCES

1. Simon, M.I., Strathmann, M.P. and Gautam, N. 1991. Diversity of G proteins in signal transduction. *Science* 252: 802-808.
2. Cali, J.J., Balcueva, E.A., Rybalkin, I. and Robishaw, J.D. 1992. Selective tissue distribution of G protein γ subunits, including a new form of the γ subunits identified by cDNA cloning. *J. Biol. Chem.* 267: 24023-24027.
3. McLaughlin, S.K., McKinnon, P.J. and Margolskee, R.F. 1992. Gustducin is a taste-cell-specific G protein closely related to the transducins. *Nature* 357: 563-569.
4. von Weizsäcker, E., Strathman, M.P. and Simon, M.I. 1992. Diversity among the β subunits of heterotrimeric GTP-binding proteins: characterization of a novel β -subunit cDNA. *Biochem. Biophys. Res. Commun.* 183: 350-356.
5. Conklin, B.R. and Bourne, H.R. 1993. Structural elements of G_α subunits that interact with G_{βγ} receptors, and effectors. *Cell* 73: 631-641.

CHROMOSOMAL LOCATION

Genetic locus: GNAT3 (human) mapping to 7q21.11; Gnat3 (mouse) mapping to 5 A3.

SOURCE

G_{α gust} (B-3) is a mouse monoclonal antibody specific for an epitope mapping between amino acids 53-74 of G_{α gust} of human origin.

PRODUCT

Each vial contains 200 μ g IgM kappa light chain in 1.0 ml of PBS with < 0.1% sodium azide and 0.1% gelatin.

G_{α gust} (B-3) is available conjugated to agarose (sc-518163 AC), 500 μ g/0.25 ml agarose in 1 ml, for IP; to HRP (sc-518163 HRP), 200 μ g/ml, for WB, IHC(P) and ELISA; to either phycoerythrin (sc-518163 PE), fluorescein (sc-518163 FITC), Alexa Fluor[®] 488 (sc-518163 AF488), Alexa Fluor[®] 546 (sc-518163 AF546), Alexa Fluor[®] 594 (sc-518163 AF594) or Alexa Fluor[®] 647 (sc-518163 AF647), 200 μ g/ml, for WB (RGB), IF, IHC(P) and FCM; and to either Alexa Fluor[®] 680 (sc-518163 AF680) or Alexa Fluor[®] 790 (sc-518163 AF790), 200 μ g/ml, for Near-Infrared (NIR) WB, IF and FCM.

APPLICATIONS

G_{α gust} (B-3) is recommended for detection of G_{α gust} of mouse, rat and human origin by Western Blotting (starting dilution 1:100, dilution range 1:100-1:1000), immunoprecipitation [1-2 μ g per 100-500 μ g of total protein (1 ml of cell lysate)], immunofluorescence (starting dilution 1:50, dilution range 1:50-1:500) and solid phase ELISA (starting dilution 1:30, dilution range 1:30-1:3000).

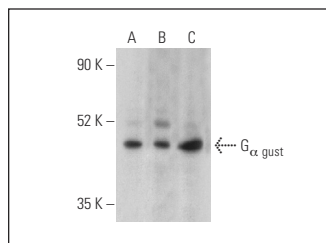
Suitable for use as control antibody for G_{α gust} siRNA (m): sc-41749, G_{α gust} shRNA Plasmid (m): sc-41749-SH and G_{α gust} shRNA (m) Lentiviral Particles: sc-41749-V.

Positive Controls: HEK293T whole cell lysate: sc-45137, HEL 92.1.7 cell lysate: sc-2270 or PMJ2-PC whole cell lysate.

RECOMMENDED SECONDARY REAGENTS

To ensure optimal results, the following support reagents are recommended: 1) Western Blotting: use m-IgG κ BP-HRP: sc-516102 or m-IgG κ BP-HRP (Cruz Marker): sc-516102-CM (dilution range: 1:1000-1:10000), Cruz Marker[™] Molecular Weight Standards: sc-2035, UltraCruz[®] Blocking Reagent: sc-516214 and Western Blotting Luminol Reagent: sc-2048. 2) Immunoprecipitation: use Protein L-Agarose: sc-2336 (0.5 ml agarose/2.0 ml). 3) Immunofluorescence: use m-IgG κ BP-FITC: sc-516140 or m-IgG κ BP-PE: sc-516141 (dilution range: 1:50-1:200) with UltraCruz[®] Mounting Medium: sc-24941 or UltraCruz[®] Hard-set Mounting Medium: sc-359850.

DATA



G_{α gust} (B-3): sc-518163. Western blot analysis of G_{α gust} expression in HEK293T (A), HEL 92.1.7 (B) and PMJ2-PC (C) whole cell lysates. Detection reagent used: m-IgG κ BP-HRP: sc-516102.

STORAGE

Store at 4° C, **DO NOT FREEZE**. Stable for one year from the date of shipment. Non-hazardous. No MSDS required.

RESEARCH USE

For research use only, not for use in diagnostic procedures.

PROTOCOLS

See our web site at www.scbt.com for detailed protocols and support products.

Alexa Fluor[®] is a trademark of Molecular Probes, Inc., Oregon, USA