



# SZABO SCANDIC

Part of Europa Biosite

## Produktinformation



Forschungsprodukte & Biochemikalien



Zellkultur & Verbrauchsmaterial



Diagnostik & molekulare Diagnostik



Laborgeräte & Service

Weitere Information auf den folgenden Seiten!  
See the following pages for more information!



### Lieferung & Zahlungsart

siehe unsere [Liefer- und Versandbedingungen](#)

### Zuschläge

- Mindermengenzuschlag
- Trockeneiszuschlag
- Gefahrgutzuschlag
- Expressversand

### SZABO-SCANDIC HandelsgmbH

Quellenstraße 110, A-1100 Wien

T. +43(0)1 489 3961-0

F. +43(0)1 489 3961-7

[mail@szabo-scandic.com](mailto:mail@szabo-scandic.com)

[www.szabo-scandic.com](http://www.szabo-scandic.com)

[linkedin.com/company/szaboscandic](https://www.linkedin.com/company/szaboscandic) 

# RBMX2 (C-1): sc-518215

## BACKGROUND

RBMX2 (RNA-binding motif protein, X-linked 2) is a 322 amino acid member of the IST3 family that contains one RRM (RNA recognition motif) domain. The RBMX2 gene is intronless, conserved in chimpanzee, canine, bovine, mouse, rat, zebrafish, fruit fly, mosquito, *C. elegans*, *S. pombe*, *S. cerevisiae*, *K. lactis*, *E. gossypii*, *M. grisea*, *N. crassa*, *A. thaliana*, rice and *P. falciparum*, and maps to human chromosome Xq26.1. The X and Y chromosomes are the human sex chromosomes. Chromosome X consists of about 153 million base pairs and nearly 1,000 genes. The combination of an X and Y chromosome lead to normal male development while two copies of X lead to normal female development. More than one copy of the X chromosome with a Y chromosome causes Klinefelter's syndrome. A single copy of X alone leads to Turner's syndrome. More than two copies of the X chromosome, in the absence of a Y chromosome, is known as Triple X syndrome. Color blindness, hemophilia, and Duchenne muscular dystrophy are well known X chromosome-linked conditions that affect males more frequently as males carry a single X chromosome.

## REFERENCES

- Givens, J.R., et al. 1975. Features of Turner's syndrome in women with polycystic ovaries. *Obstet. Gynecol.* 45: 619-624.
- Lai, C.H., et al. 2000. Identification of novel human genes evolutionarily conserved in *Caenorhabditis elegans* by comparative proteomics. *Genome Res.* 10: 703-713.
- Bernardino-Sgherri, J., et al. 2002. Overall DNA methylation and chromatin structure of normal and abnormal X chromosomes. *Cytogenet. Genome Res.* 99: 85-91.
- Deeb, S.S. 2005. The molecular basis of variation in human color vision. *Clin. Genet.* 67: 369-377.
- Tsend-Ayush, E., et al. 2005. RBMX gene is essential for brain development in zebrafish. *Dev. Dyn.* 234: 682-688.
- Ross, M.T., et al. 2005. The DNA sequence of the human X chromosome. *Nature* 434: 325-337.
- Bhowmick, B.K., et al. 2007. The origin and evolution of human ampliconic gene families and ampliconic structure. *Genome Res.* 17: 441-450.
- Augui, S., et al. 2007. Sensing X chromosome pairs before X inactivation via a novel X-pairing region of the Xic. *Science* 318: 1632-1636.

## CHROMOSOMAL LOCATION

Genetic locus: RBMX2 (human) mapping to Xq26.1.

## SOURCE

RBMX2 (C-1) is a mouse monoclonal antibody specific for an epitope mapping between amino acids 252-274 of RBMX2 of human origin.

## PRODUCT

Each vial contains 200 µg IgM kappa light chain in 1.0 ml of PBS with < 0.1% sodium azide and 0.1% gelatin.

## APPLICATIONS

RBMX2 (C-1) is recommended for detection of RBMX2 of human origin by Western Blotting (starting dilution 1:100, dilution range 1:100-1:1000), immunoprecipitation [1-2 µg per 100-500 µg of total protein (1 ml of cell lysate)], immunofluorescence (starting dilution 1:50, dilution range 1:50-1:500) and solid phase ELISA (starting dilution 1:30, dilution range 1:30-1:3000).

Suitable for use as control antibody for RBMX2 siRNA (h): sc-90881, RBMX2 shRNA Plasmid (h): sc-90881-SH and RBMX2 shRNA (h) Lentiviral Particles: sc-90881-V.

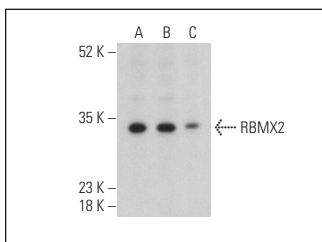
Molecular Weight of RBMX2: 37 kDa.

Positive Controls: HeLa whole cell lysate: sc-2200, MCF7 whole cell lysate: sc-2206 or U-251-MG whole cell lysate: sc-364176.

## RECOMMENDED SUPPORT REAGENTS

To ensure optimal results, the following support reagents are recommended: 1) Western Blotting: use m-IgGκ BP-HRP: sc-516102 or m-IgGκ BP-HRP (Cruz Marker): sc-516102-CM (dilution range: 1:1000-1:10000), Cruz Marker™ Molecular Weight Standards: sc-2035, UltraCruz® Blocking Reagent: sc-516214 and Western Blotting Luminol Reagent: sc-2048. 2) Immunoprecipitation: use Protein L-Agarose: sc-2336 (0.5 ml agarose/2.0 ml). 3) Immunofluorescence: use m-IgGκ BP-FITC: sc-516140 or m-IgGκ BP-PE: sc-516141 (dilution range: 1:50-1:200) with UltraCruz® Mounting Medium: sc-24941 or UltraCruz® Hard-set Mounting Medium: sc-359850.

## DATA



RBMX2 (C-1): sc-518215. Western blot analysis of RBMX2 expression in HeLa (A), U-251-MG (B) and MCF7 (C) whole cell lysates. Detection reagent used: m-IgGκ BP-HRP: sc-516102.

## STORAGE

Store at 4° C, \*\*DO NOT FREEZE\*\*. Stable for one year from the date of shipment. Non-hazardous. No MSDS required.

## RESEARCH USE

For research use only, not for use in diagnostic procedures.

## PROTOCOLS

See our web site at [www.scbt.com](http://www.scbt.com) for detailed protocols and support products.