



SZABO SCANDIC

Part of Europa Biosite

Produktinformation



Forschungsprodukte & Biochemikalien



Zellkultur & Verbrauchsmaterial



Diagnostik & molekulare Diagnostik



Laborgeräte & Service

Weitere Information auf den folgenden Seiten!
See the following pages for more information!



Lieferung & Zahlungsart

siehe unsere [Liefer- und Versandbedingungen](#)

Zuschläge

- Mindermengenzuschlag
- Trockeneiszuschlag
- Gefahrgutzuschlag
- Expressversand

SZABO-SCANDIC HandelsgmbH

Quellenstraße 110, A-1100 Wien

T. +43(0)1 489 3961-0

F. +43(0)1 489 3961-7

mail@szabo-scandic.com

www.szabo-scandic.com

[linkedin.com/company/szaboscandic](https://www.linkedin.com/company/szaboscandic) 

m-IgG Fc BP-CFL 680: sc-533657

BACKGROUND

Mouse IgG Fc binding protein (m-IgG Fc BP) conjugated to CruzFluor™ 680 (CFL 680) is a strongly recommended alternative to conventional goat/rabbit anti-mouse IgG secondary antibodies for NIR Western Blotting (WB), immunofluorescence (IF) and flow cytometry (FCM) signal enhancement. CruzFluor™ 680 (CFL 680) is a near-infrared fluorescent dye that is an excellent substitute for AlexaFluor® 680, offering comparable photostability and the ability to resist protein quenching. Suitable for use with Near-Infrared (NIR) imaging systems, such as LI-COR/Odyssey, Invitrogen/iBright and other comparable systems. Mouse IgG Fc binding protein is a highly specific reagent that provides strong signal with minimal background and virtually complete elimination of lot to lot variation associated with conventionally generated secondary antibodies. Mouse IgG Fc binding protein (m-IgG Fc BP) is suitable for binding to the Fc region of most, but not all, mouse IgG₁, IgG_{2a} and IgG_{2b} immunoglobulins, and to a lesser extent to mouse IgG₃; not suitable for use with mouse monoclonal IgM, IgA and IgE. Not cross reactive with human, rat, rabbit and goat IgG antibodies.

SOURCE

m-IgG Fc BP-CFL 680 is a purified recombinant mouse IgG Fc binding protein conjugated to CruzFluor™ 680 (CFL 680).

PRODUCT

Each vial contains 50 µg mouse IgG Fc binding protein-CFL 680 in 0.5 ml of PBS containing 0.1% gelatin and 0.1% sodium azide.

APPLICATIONS

m-IgG Fc BP-CFL 680 is recommended for detection of mouse IgG Fc by NIR Western Blotting (starting dilution: 1:1000, dilution range: 1:1000-1:10000) and immunofluorescence (starting dilution 1:50, dilution range 1:50-1:200) and flow cytometry (0.5-1 µg per 1 x 10⁶ cells). Optimal dilution to be determined by titration.

For Western Blotting using tissue extracts and m-IgG Fc BP-CFL 680, we strongly recommend substracting endogenous immunoglobulins from extracts with Protein G PLUS-Agarose Reagent: sc-2002, to prevent Western Blotting interference when detecting proteins of approximately 25 kDa in size.

RECOMMENDED SUPPORT PRODUCTS

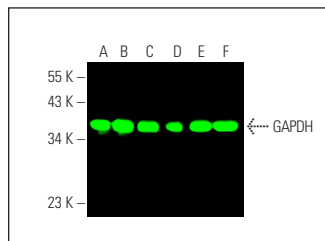
- RIPA Lysis Buffer, 50 ml, cell lysis buffer with protease inhibitors: sc-24948
- Electrophoresis Sample Buffer, 2X, 25 ml, reducing buffer: sc-24945
- Running Buffer, 10X, 1 L, TRIS-Glycine WB running buffer, pH 8.3: sc-24949
- Towbin, with SDS, 10X, 1 L, WB transfer buffer pH 8.3: sc-24954
- TBS Blotting A, lyophilized powder in single-use bottle: sc-2333
- UltraCruz® PVDF Transfer Membrane, 0.45 µm, 30 cm x 3 m roll: sc-3723
- UltraCruz® Nitrocellulose Pure Transfer Membrane, 0.22 µm, 30 cm x 3 m roll: sc-3718
- UltraCruz® Gel Incubation Trays, 100 per pack: sc-201755 (blue), sc-201756 (green), sc-201757 (pink), sc-201758 (yellow), sc-201759 (orange)

Alexa Fluor® is a trademark of Molecular Probes, Inc., Oregon, USA

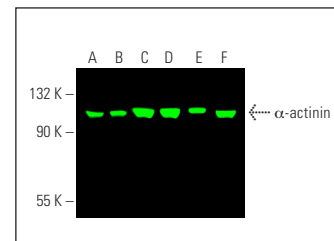
STORAGE

Store at 4° C, ****DO NOT FREEZE****. Stable for one year from the date of shipment. Non-hazardous. No MSDS required.

DATA



GAPDH (0411): sc-47724. Near-infrared western blot analysis of GAPDH expression in Jurkat (A), MOLT-4 (B), HeLa (C), K-562 (D), BJAB (E) and IMR-32 (F) whole cell lysates. Blocked with UltraCruz® Blocking Reagent: sc-516214. Detection reagent used: m-IgG Fc BP-CFL 680: sc-533657.



α-actinin (H-2): sc-17829. Near-infrared western blot analysis of α-actinin expression in HeLa (A), Jurkat (B), HeLa (C), RT-4 (D), SJRH30 (E) and K-562 (F) whole cell lysates. Blocked with UltraCruz® Blocking Reagent: sc-516214. Detection reagent used: m-IgG Fc BP-CFL 680: sc-533657.

RESEARCH USE

For research use only, not for use in diagnostic procedures.

PROTOCOLS

See our web site at www.scbt.com for detailed protocols and support products.

CRUZFLUOR™ SPECTRAL PROPERTIES

| PRODUCT | CAT. # | EXCITATION MAXIMUM | EMISSION MAXIMUM |
|-------------------------------|-----------|--------------------|------------------|
| m-IgG Fc BP-CFL 488 | sc-533653 | 488 nm | 514 nm |
| m-IgG ₁ BP-CFL 488 | sc-533661 | | |
| m-IgG Fc BP-CFL 555 | sc-533654 | 556 nm | 569 nm |
| m-IgG ₁ BP-CFL 555 | sc-533662 | | |
| m-IgG Fc BP-CFL 594 | sc-533655 | 587 nm | 603 nm |
| m-IgG ₁ BP-CFL 594 | sc-533663 | | |
| m-IgG Fc BP-CFL 647 | sc-533656 | 654 nm | 669 nm |
| m-IgG ₁ BP-CFL 647 | sc-533664 | | |
| m-IgG Fc BP-CFL 680 | sc-533657 | 683 nm | 700 nm |
| m-IgG ₁ BP-CFL 680 | sc-533665 | | |
| m-IgG Fc BP-CFL 790 | sc-533658 | 786 nm | 811 nm |
| m-IgG ₁ BP-CFL 790 | sc-533666 | | |