



# SZABO SCANDIC

Part of Europa Biosite

## Produktinformation



Forschungsprodukte & Biochemikalien



Zellkultur & Verbrauchsmaterial



Diagnostik & molekulare Diagnostik



Laborgeräte & Service

Weitere Information auf den folgenden Seiten!  
See the following pages for more information!



### Lieferung & Zahlungsart

siehe unsere [Liefer- und Versandbedingungen](#)

### Zuschläge

- Mindermengenzuschlag
- Trockeneiszuschlag
- Gefahrgutzuschlag
- Expressversand

### SZABO-SCANDIC HandelsgmbH

Quellenstraße 110, A-1100 Wien

T. +43(0)1 489 3961-0

F. +43(0)1 489 3961-7

[mail@szabo-scandic.com](mailto:mail@szabo-scandic.com)

[www.szabo-scandic.com](http://www.szabo-scandic.com)

[linkedin.com/company/szaboscandic](https://www.linkedin.com/company/szaboscandic)

# m-IgG<sub>1</sub> BP-CFL 594: sc-533663

## BACKGROUND

Mouse IgG<sub>1</sub> binding protein (IgG<sub>1</sub> BP) conjugated to CruzFluor™ 594 (CFL 594) is a strongly recommended alternative to conventional goat/rabbit anti-mouse IgG secondary antibodies for RGB Western Blotting (WB), immunofluorescence (IF) and flow cytometry (FCM) signal enhancement. CruzFluor™ 594 (CFL 594) is a red fluorescent dye that is an excellent substitute for AlexaFluor® 594, offering comparable photostability and the ability to resist protein quenching. Suitable for use with RGB imaging systems, such as Invitrogen/iBright and other comparable systems. Mouse IgG<sub>1</sub> binding protein is a highly specific reagent that provides strong signal with minimal background and virtually complete elimination of lot to lot variation associated with conventionally generated secondary antibodies. Mouse IgG<sub>1</sub> binding protein (m-IgG<sub>1</sub> BP) is suitable for binding to most, but not all, mouse IgG<sub>1</sub> immunoglobulins, comprising approximately 55% of SCBT's mouse monoclonal antibodies; not suitable for use with mouse monoclonal IgG<sub>2a</sub>, IgG<sub>2b</sub>, IgG<sub>3</sub>, IgM, IgA and IgE antibodies. It may slightly cross react with mouse IgG<sub>2b</sub> or goat IgG antibodies. Not cross reactive with human, rat or rabbit IgG antibodies.

## SOURCE

m-IgG<sub>1</sub> BP-CFL 594 is a purified recombinant mouse IgG<sub>1</sub> binding protein conjugated to CruzFluor™ 594 (CFL 594).

## PRODUCT

Each vial contains 100 µg mouse IgG<sub>1</sub> binding protein-CFL 594 in 0.5 ml of PBS containing 0.1% gelatin and 0.1% sodium azide.

## APPLICATIONS

m-IgG<sub>1</sub> BP-CFL 594 is recommended for detection of mouse IgG<sub>1</sub> by RGB Western Blotting (starting dilution: 1:1000, dilution range: 1:500-1:2000), immunofluorescence (starting dilution 1:50, dilution range 1:50-1:200) and flow cytometry (0.5-1 µg per 1 x 10<sup>6</sup> cells). Optimal dilution to be determined by titration.

## RECOMMENDED SUPPORT PRODUCTS

- CrystalCruz® Cover Glasses, 22 x 50 mm, precleaned: sc-24975
- PBS (Phosphate Buffered Saline), powder, 1 packet: sc-24947
- Formaldehyde, 37% formaldehyde solution, 25 ml: sc-203049
- Hydrogen Peroxide, 30% solution, 100 ml: sc-203336
- FCM Lysing solution: sc-3621
- FCM Fixation Buffer: sc-3622
- FCM Permeabilization Buffer: sc-3623
- FCM Wash Buffer: sc-3624
- Intracellular FCM System: sc-45063

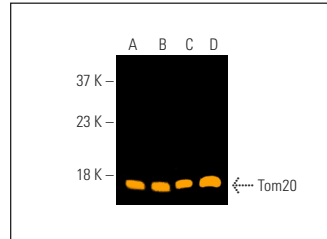
## RESEARCH USE

For research use only, not for use in diagnostic procedures.

## STORAGE

Store at 4° C, **\*\*DO NOT FREEZE\*\***. Stable for one year from the date of shipment. Non-hazardous. No MSDS required.

## DATA



Tom20 (29): sc-136211. Fluorescent western blot analysis of Tom20 expression in Raji (A), CCRF-CEM (B), MDA-MB-231 (C) and TT (D) whole cell lysates. Blocked with UltraCruz® Blocking Reagent: sc-516214. Detection reagent used: m-IgG1 BP-CFL 594: sc-533663.

## PROTOCOLS

See our web site at [www.scbt.com](http://www.scbt.com) for detailed protocols and support products.

## CRUZFLUOR™ SPECTRAL PROPERTIES

PRODUCT	CAT. #	EXCITATION MAXIMUM	EMISSION MAXIMUM
m-IgG Fc BP-CFL 488	sc-533653	488 nm	514 nm
m-IgG <sub>1</sub> BP-CFL 488	sc-533661		
m-IgG Fc BP-CFL 555	sc-533654	556 nm	569 nm
m-IgG <sub>1</sub> BP-CFL 555	sc-533662		
m-IgG Fc BP-CFL 594	sc-533655	587 nm	603 nm
m-IgG <sub>1</sub> BP-CFL 594	sc-533663		
m-IgG Fc BP-CFL 647	sc-533656	654 nm	669 nm
m-IgG <sub>1</sub> BP-CFL 647	sc-533664		
m-IgG Fc BP-CFL 680	sc-533657	683 nm	700 nm
m-IgG <sub>1</sub> BP-CFL 680	sc-533665		
m-IgG Fc BP-CFL 790	sc-533658	786 nm	811 nm
m-IgG <sub>1</sub> BP-CFL 790	sc-533666		