



SZABO SCANDIC

Part of Europa Biosite

Produktinformation



Forschungsprodukte & Biochemikalien



Zellkultur & Verbrauchsmaterial



Diagnostik & molekulare Diagnostik



Laborgeräte & Service

Weitere Information auf den folgenden Seiten!
See the following pages for more information!



Lieferung & Zahlungsart

siehe unsere [Liefer- und Versandbedingungen](#)

Zuschläge

- Mindermengenzuschlag
- Trockeneiszuschlag
- Gefahrgutzuschlag
- Expressversand

SZABO-SCANDIC HandelsgmbH

Quellenstraße 110, A-1100 Wien

T. +43(0)1 489 3961-0

F. +43(0)1 489 3961-7

mail@szabo-scandic.com

www.szabo-scandic.com

[linkedin.com/company/szaboscandic](https://www.linkedin.com/company/szaboscandic) 

m-IgG_{2a} BP-CFL 680: sc-542739

BACKGROUND

Mouse IgG_{2a} binding protein (m-IgG_{2a} BP) conjugated to CruzFluor™ 680 (CFL 680) is a strongly recommended alternative to conventional goat/rabbit anti-mouse IgG secondary antibodies for NIR Western Blotting (WB), immunofluorescence (IF) and flow cytometry (FCM) signal enhancement. CruzFluor™ 680 (CFL 680) is a near-infrared fluorescent dye that is an excellent substitute for AlexaFluor® 680, offering comparable photostability and the ability to resist protein quenching. Suitable for use with Near-Infrared (NIR) imaging systems, such as LI-COR/Odyssey, Invitrogen/iBright and other comparable systems. Mouse IgG_{2a} binding protein is a highly specific reagent that provides strong signal with minimal background and virtually complete elimination of lot to lot variation associated with conventionally-generated secondary antibodies. Mouse IgG_{2a} binding protein (m-IgG_{2a} BP) is suitable for binding to most, but not all mouse monoclonal IgG_{2a} antibodies; not suitable for use with mouse monoclonal IgG₁, IgG_{2b}, IgG₃, IgM, IgA or IgE antibodies. Not cross reactive with human or rat IgG antibodies.

SOURCE

m-IgG_{2a} BP-CFL 680 is a purified recombinant mouse IgG_{2a} binding protein conjugated to CruzFluor™ 680 (CFL 680).

PRODUCT

Each vial contains 50 µg mouse IgG_{2a} binding protein-CFL 680 in 0.5 ml of PBS containing 0.1% gelatin and 0.1% sodium azide.

APPLICATIONS

m-IgG_{2a} BP-CFL 680 is recommended for detection of mouse IgG_{2a} by NIR Western Blotting (starting dilution: 1:1000, dilution range: 1:1000-1:10000) and immunofluorescence (starting dilution 1:50, dilution range 1:50-1:200) and flow cytometry (0.5-1 µg per 1 x 10⁶ cells). Optimal dilution to be determined by titration.

For Western Blotting using tissue extracts and m-IgG_{2a} BP-CFL 680, we strongly recommend subtracting endogenous immunoglobulins from extracts with Protein G PLUS-Agarose Reagent: sc-2002, to prevent Western Blotting interference when detecting proteins of approximately 25 kDa in size.

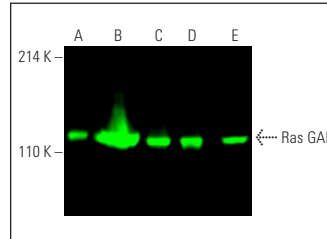
RECOMMENDED SUPPORT PRODUCTS

- RIPA Lysis Buffer, 50 ml, cell lysis buffer with protease inhibitors: sc-24948
- Electrophoresis Sample Buffer, 2X, 25 ml, reducing buffer: sc-24945
- Running Buffer, 10X, 1 L, TRIS-Glycine WB running buffer, pH 8.3: sc-24949
- Towbin, with SDS, 10X, 1 L, WB transfer buffer pH 8.3: sc-24954
- TBS Blotto A, lyophilized powder in single-use bottle: sc-2333
- UltraCruz® PVDF Transfer Membrane, 0.45 µm, 30 cm x 3 m roll: sc-3723
- UltraCruz® Nitrocellulose Pure Transfer Membrane, 0.22 µm, 30 cm x 3 m roll: sc-3718
- UltraCruz® Gel Incubation Trays, 100 per pack: sc-201755 (blue), sc-201756 (green), sc-201757 (pink), sc-201758 (yellow), sc-201759 (orange)

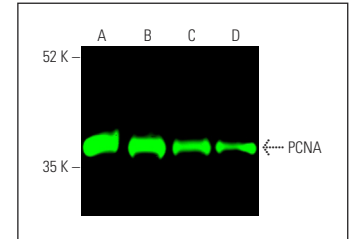
STORAGE

Store at 4° C, ****DO NOT FREEZE****. Stable for one year from the date of shipment. Non-hazardous. No MSDS required.

DATA



Ras GAP (B4F8): sc-63. Near-Infrared western blot analysis of Ras GAP expression in NIH/3T3 (A), KNRK (B), 3611-RF (C), C6 (D) and Neuro-2A (E) whole cell lysates. Blocked with UltraCruz® Blocking Reagent: sc-516214. Detection reagent used: m-IgG_{2a} BP-CFL 680: sc-542739.



PCNA (PC10): sc-56. Near-Infrared western blot analysis of PCNA expression in HCT-116 (A), MOLT-4 (B), NIH/3T3 (C) and KNRK (D) whole cell lysates. Blocked with UltraCruz® Blocking Reagent: sc-516214. Detection reagent used: m-IgG_{2a} BP-CFL 680: sc-542739.

RESEARCH USE

For research use only, not for use in diagnostic procedures.

PROTOCOLS

See our web site at www.scbt.com for detailed protocols and support products.

CRUZFLUOR™ SPECTRAL PROPERTIES

PRODUCT	CAT. #	EXCITATION MAXIMUM	EMISSION MAXIMUM
m-IgG _{2a} BP-CFL 488	sc-542735	488 nm	514 nm
m-IgG _{2b} BP-CFL 488	sc-542745		
m-IgG _{2a} BP-CFL 555	sc-542736	556 nm	569 nm
m-IgG _{2b} BP-CFL 555	sc-542746		
m-IgG _{2a} BP-CFL 594	sc-542737	587 nm	603 nm
m-IgG _{2b} BP-CFL 594	sc-542747		
m-IgG _{2a} BP-CFL 647	sc-542738	654 nm	669 nm
m-IgG _{2b} BP-CFL 647	sc-542748		
m-IgG _{2a} BP-CFL 680	sc-542739	683 nm	700 nm
m-IgG _{2b} BP-CFL 680	sc-542749		
m-IgG _{2a} BP-CFL 790	sc-542740	786 nm	811 nm
m-IgG _{2b} BP-CFL 790	sc-542750		