



SZABO SCANDIC

Part of Europa Biosite

Produktinformation



Forschungsprodukte & Biochemikalien



Zellkultur & Verbrauchsmaterial



Diagnostik & molekulare Diagnostik



Laborgeräte & Service

Weitere Information auf den folgenden Seiten!
See the following pages for more information!



Lieferung & Zahlungsart

siehe unsere [Liefer- und Versandbedingungen](#)

Zuschläge

- Mindermengenzuschlag
- Trockeneiszuschlag
- Gefahrgutzuschlag
- Expressversand

SZABO-SCANDIC HandelsgmbH

Quellenstraße 110, A-1100 Wien

T. +43(0)1 489 3961-0

F. +43(0)1 489 3961-7

mail@szabo-scandic.com

www.szabo-scandic.com

[linkedin.com/company/szaboscandic](https://www.linkedin.com/company/szaboscandic) 

Rabbit anti-CD21 antibody, clone SQab1728 (monoclonal)

Clone no. SQab1728

MONOSAN

Product name	Rabbit anti-CD21 antibody, clone SQab1728 (monoclonal)
Host	Rabbit
Applications	FC, IHC-P
Species reactivity	Human, Mouse
Conjugate	-
Immunogen	Synthetic peptide around the C-terminus of CD21.
Isotype	-
Clonality	Monoclonal
Clone number	SQab1728
Size	100 ul
Concentration	n/a
Format	Affinity purification with immunogen.
Storage buffer	PBS, 0.01% Sodium azide, 40% Glycerol and 0.05% BSA.
Storage until expiry date	-20°C

FOR RESEARCH USE ONLY. NOT FOR USE IN DIAGNOSTIC PROCEDURES

Rabbit anti-CD21 antibody, clone SQab1728 (monoclonal)

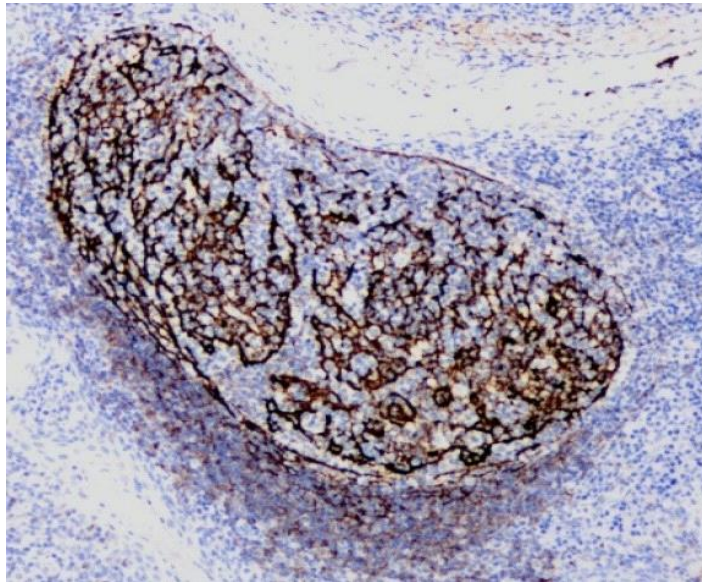
Clone no. SQab1728

MONOSAN

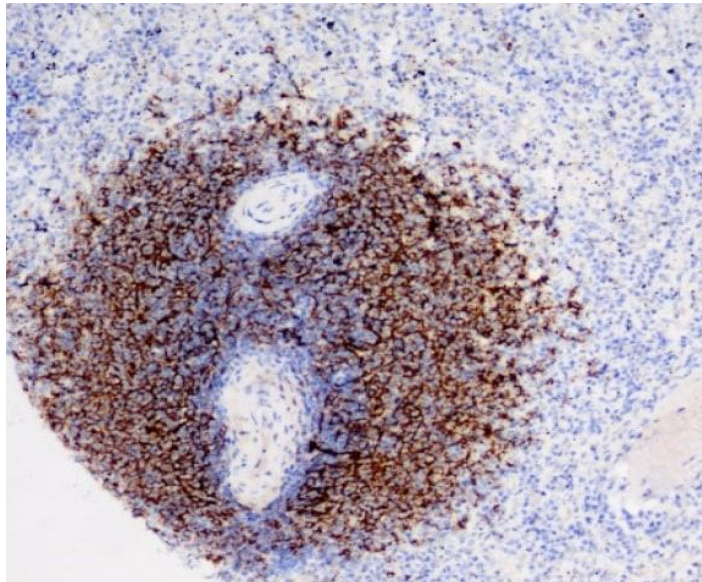
Additional info

Application note: IHC-P: Antigen retrieval: Heat mediated was performed using Tris/EDTA buffer (pH 9.0).* The dilutions indicate recommended starting dilutions and the optimal dilutions or concentrations should be determined by the scientist.Storage instruction: For continuous use, store undiluted antibody at 2-8°C for up to a week. For long-term storage, aliquot and store at -20°C. Storage in frost free freezers is not recommended. Avoid repeated freeze/thaw cycles. Suggest spin the vial prior to opening. The antibody solution should be gently mixed before use.Background: This gene encodes a membrane protein, which functions as a receptor for Epstein-Barr virus (EBV) binding on B and T lymphocytes. Genetic variations in this gene are associated with susceptibility to systemic lupus erythematosus type 9 (SLEB9). Alternatively spliced transcript variants encoding different isoforms have been found for this gene.[provided by RefSeq, Sep 2009]

Images



Immunohistochemistry: Formalin-fixed and paraffin-embedded Human spleen tissue stained with anti-CD21 antibody [SQab1728] at 1:200 dilution.



Immunohistochemistry: Formalin-fixed and paraffin-embedded Human appendix tissue stained with anti-CD21 antibody [SQab1728] at 1:200 dilution.

References

1. -
2. -
3. -
4. -
5. -

FOR RESEARCH USE ONLY. NOT FOR USE IN DIAGNOSTIC PROCEDURES