



SZABO SCANDIC

Part of Europa Biosite

Produktinformation



Forschungsprodukte & Biochemikalien



Zellkultur & Verbrauchsmaterial



Diagnostik & molekulare Diagnostik



Laborgeräte & Service

Weitere Information auf den folgenden Seiten!
See the following pages for more information!



Lieferung & Zahlungsart

siehe unsere [Liefer- und Versandbedingungen](#)

Zuschläge

- Mindermengenzuschlag
- Trockeneiszuschlag
- Gefahrgutzuschlag
- Expressversand

SZABO-SCANDIC HandelsgmbH

Quellenstraße 110, A-1100 Wien

T. +43(0)1 489 3961-0

F. +43(0)1 489 3961-7

mail@szabo-scandic.com

www.szabo-scandic.com

[linkedin.com/company/szaboscandic](https://www.linkedin.com/company/szaboscandic) 

Rabbit anti-S100P antibody, clone SQab1730 (monoclonal)

Clone no. SQab1730

MONOSAN

Product name	Rabbit anti-S100P antibody, clone SQab1730 (monoclonal)
Host	Rabbit
Applications	FC, ICC/IF, IHC-P
Species reactivity	Human, Mouse, Rat
Conjugate	-
Immunogen	Synthetic peptide around the C-terminus of Human S100P.
Isotype	-
Clonality	Monoclonal
Clone number	SQab1730
Size	100 ul
Concentration	n/a
Format	Purification with Protein A.
Storage buffer	PBS, 0.01% Sodium azide, 40% Glycerol and 0.05% BSA.
Storage until expiry date	-20°C

FOR RESEARCH USE ONLY. NOT FOR USE IN DIAGNOSTIC PROCEDURES

Rabbit anti-S100P antibody, clone SQab1730 (monoclonal)

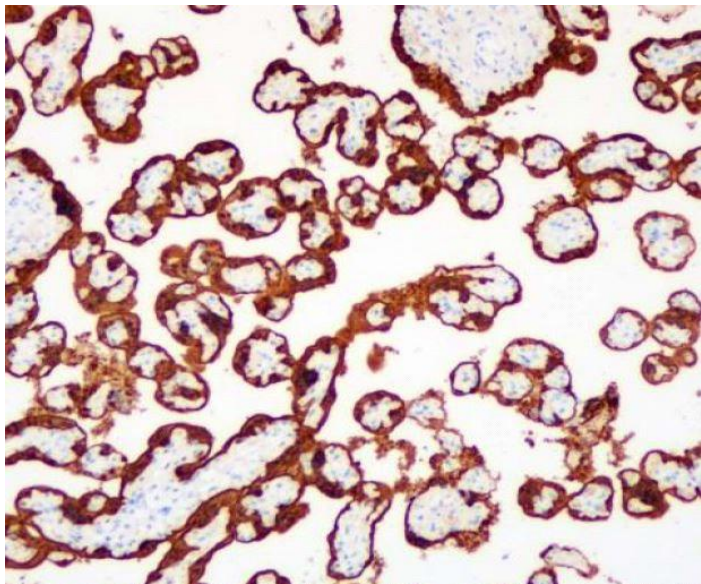
Clone no. SQab1730

MONOSAN

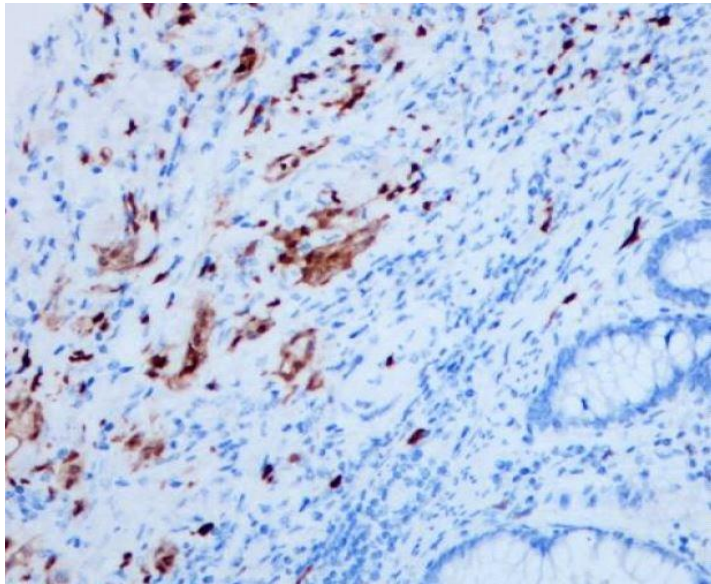
Additional info

Application note: IHC-P: Antigen Retrieval: Boil tissue section in Tris/EDTA buffer (pH 9.0). * The dilutions indicate recommended starting dilutions and the optimal dilutions or concentrations should be determined by the scientist. Storage instruction: For continuous use, store undiluted antibody at 2-8°C for up to a week. For long-term storage, aliquot and store at -20°C. Storage in frost free freezers is not recommended. Avoid repeated freeze/thaw cycles. Suggest spin the vial prior to opening. The antibody solution should be gently mixed before use. Background: The protein encoded by this gene is a member of the S100 family of proteins containing 2 EF-hand calcium-binding motifs. S100 proteins are localized in the cytoplasm and/or nucleus of a wide range of cells, and involved in the regulation of a number of cellular processes such as cell cycle progression and differentiation. S100 genes include at least 13 members which are located as a cluster on chromosome 1q21; however, this gene is located at 4p16. This protein, in addition to binding Ca²⁺, also binds Zn²⁺ and Mg²⁺. This protein may play a role in the etiology of prostate cancer. [provided by RefSeq, Jul 2008]

Images



Immunohistochemistry: Formalin-fixed and paraffin-embedded Human placenta tissue stained with anti-S100P antibody [SQab1730] at 1:200. Antigen Retrieval: Boil tissue section in Tris/EDTA buffer (pH 9.0).



Immunohistochemistry: Formalin-fixed and paraffin-embedded Human colon tissue stained with anti-S100P antibody [SQab1730] at 1:200. Antigen Retrieval: Boil tissue section in Tris/EDTA buffer (pH 9.0).

References

- 1. -
- 2. -
- 3. -
- 4. -
- 5. -

FOR RESEARCH USE ONLY. NOT FOR USE IN DIAGNOSTIC PROCEDURES