



# SZABO SCANDIC

Part of Europa Biosite

## Produktinformation



Forschungsprodukte & Biochemikalien



Zellkultur & Verbrauchsmaterial



Diagnostik & molekulare Diagnostik



Laborgeräte & Service

Weitere Information auf den folgenden Seiten!  
See the following pages for more information!



### Lieferung & Zahlungsart

siehe unsere [Liefer- und Versandbedingungen](#)

### Zuschläge

- Mindermengenzuschlag
- Trockeneiszuschlag
- Gefahrgutzuschlag
- Expressversand

### SZABO-SCANDIC HandelsgmbH

Quellenstraße 110, A-1100 Wien

T. +43(0)1 489 3961-0

F. +43(0)1 489 3961-7

[mail@szabo-scandic.com](mailto:mail@szabo-scandic.com)

[www.szabo-scandic.com](http://www.szabo-scandic.com)

[linkedin.com/company/szaboscandic](https://www.linkedin.com/company/szaboscandic) 

Rabbit anti-alpha smooth muscle Actin antibody, clone SQab1735 (monoclonal)

Clone no. SQab1735

MONOSAN

---

Product name	Rabbit anti-alpha smooth muscle Actin antibody, clone SQab1735 (monoclonal)
Host	Rabbit
Applications	FC, ICC/IF, IHC-P, IP, WB
Species reactivity	Human
Conjugate	-
Immunogen	Synthetic peptide around the C-terminus of Human alpha smooth muscle Actin.
Isotype	-
Clonality	Monoclonal
Clone number	SQab1735
Size	100 ul
Concentration	n/a
Format	Purification with Protein A.
Storage buffer	PBS, 0.01% Sodium azide, 40% Glycerol and 0.05% BSA.
Storage until expiry date	-20°C

FOR RESEARCH USE ONLY. NOT FOR USE IN DIAGNOSTIC PROCEDURES

Rabbit anti-alpha smooth muscle Actin antibody, clone SQab1735 (monoclonal)

Clone no. SQab1735

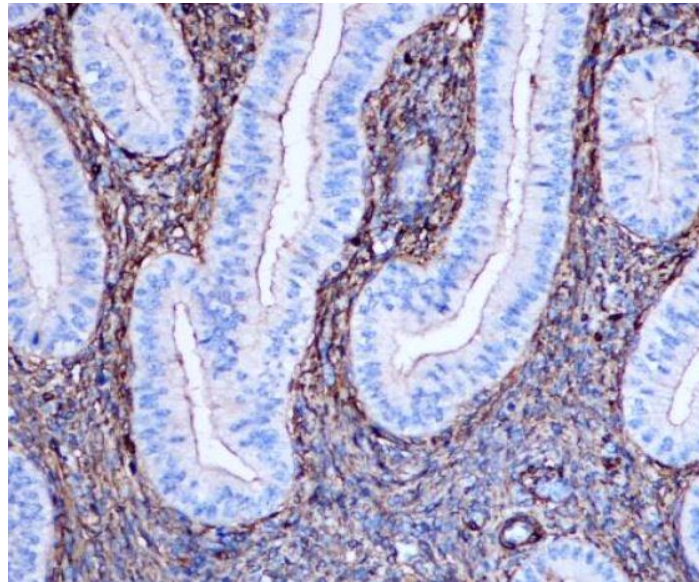
MONOSAN

---

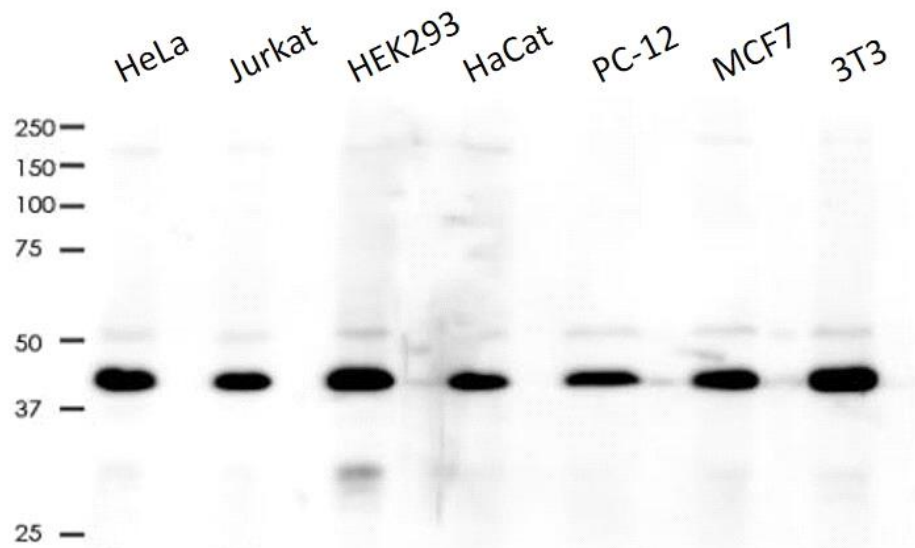
**Additional info**

Application note: IHC-P: Antigen Retrieval: Heat mediated was performed using Tris/EDTA buffer pH 9.0.\* The dilutions indicate recommended starting dilutions and the optimal dilutions or concentrations should be determined by the scientist. Storage instruction: For continuous use, store undiluted antibody at 2-8°C for up to a week. For long-term storage, aliquot and store at -20°C. Storage in frost free freezers is not recommended. Avoid repeated freeze/thaw cycles. Suggest spin the vial prior to opening. The antibody solution should be gently mixed before use. Background: The protein encoded by this gene belongs to the actin family of proteins, which are highly conserved proteins that play a role in cell motility, structure and integrity. Alpha, beta and gamma actin isoforms have been identified, with alpha actins being a major constituent of the contractile apparatus, while beta and gamma actins are involved in the regulation of cell motility. This actin is an alpha actin that is found in skeletal muscle. Defects in this gene cause aortic aneurysm familial thoracic type 6. Multiple alternatively spliced variants, encoding the same protein, have been identified. [provided by RefSeq, Nov 2008]

Images



Immunohistochemistry: Formalin-fixed and paraffin-embedded Human uterus tissue stained with anti-alpha smooth muscle Actin antibody [SQab1735] at 1:1000 dilution. Antigen Retrieval: Heat mediated was performed using Tris/EDTA buffer pH 9.0.



Western blot: 10 µg of HeLa, Jurkat, HEK293, HaCat, PC-12, MCF7 and 3T3 cell lysates stained with anti-alpha smooth muscle Actin antibody [SQab1735] at 1:2000 dilution

References

- 1. -
- 2. -
- 3. -
- 4. -
- 5. -

FOR RESEARCH USE ONLY. NOT FOR USE IN DIAGNOSTIC PROCEDURES