



SZABO SCANDIC

Part of Europa Biosite

Produktinformation



Forschungsprodukte & Biochemikalien



Zellkultur & Verbrauchsmaterial



Diagnostik & molekulare Diagnostik



Laborgeräte & Service

Weitere Information auf den folgenden Seiten!
See the following pages for more information!



Lieferung & Zahlungsart

siehe unsere [Liefer- und Versandbedingungen](#)

Zuschläge

- Mindermengenzuschlag
- Trockeneiszuschlag
- Gefahrgutzuschlag
- Expressversand

SZABO-SCANDIC HandelsgmbH

Quellenstraße 110, A-1100 Wien

T. +43(0)1 489 3961-0

F. +43(0)1 489 3961-7

mail@szabo-scandic.com

www.szabo-scandic.com

[linkedin.com/company/szaboscandic](https://www.linkedin.com/company/szaboscandic) 

Rabbit anti-CD138 / Syndecan 1 antibody, clone SQab1741 (monoclonal)

Clone no. SQab1741

MONOSAN

Product name	Rabbit anti-CD138 / Syndecan 1 antibody, clone SQab1741 (monoclonal)
Host	Rabbit
Applications	FC, IHC-P
Species reactivity	Human
Conjugate	-
Immunogen	Synthetic peptide around aa. 200-300 of Human CD138.
Isotype	-
Clonality	Monoclonal
Clone number	SQab1741
Size	100 ul
Concentration	n/a
Format	Purification with Protein A.
Storage buffer	PBS, 0.01% Sodium azide, 40% Glycerol and 0.05% BSA.
Storage until expiry date	-20°C

FOR RESEARCH USE ONLY. NOT FOR USE IN DIAGNOSTIC PROCEDURES

Rabbit anti-CD138 / Syndecan 1 antibody, clone SQab1741 (monoclonal)

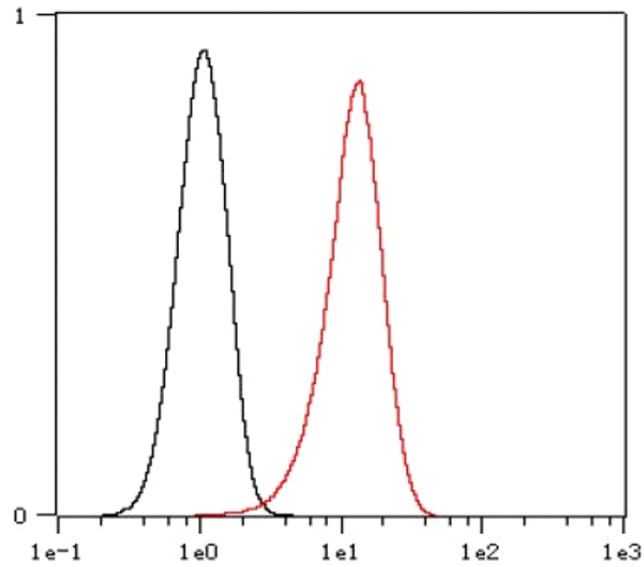
Clone no. SQab1741

MONOSAN

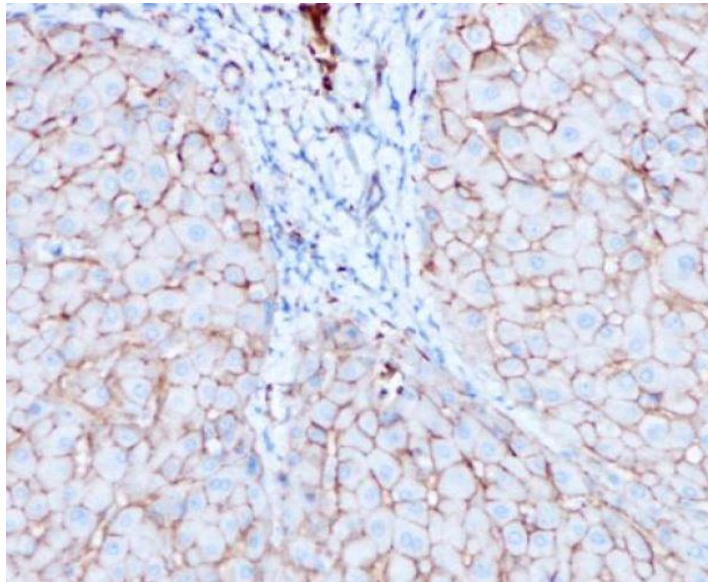
Additional info

Application note: IHC-P: Antigen Retrieval: Boil tissue section in Tris/EDTA buffer (pH 9.0).* The dilutions indicate recommended starting dilutions and the optimal dilutions or concentrations should be determined by the scientist. Storage instruction: For continuous use, store undiluted antibody at 2-8°C for up to a week. For long-term storage, aliquot and store at -20°C. Storage in frost free freezers is not recommended. Avoid repeated freeze/thaw cycles. Suggest spin the vial prior to opening. The antibody solution should be gently mixed before use. Background: The protein encoded by this gene is a transmembrane (type I) heparan sulfate proteoglycan and is a member of the syndecan proteoglycan family. The syndecans mediate cell binding, cell signaling, and cytoskeletal organization and syndecan receptors are required for internalization of the HIV-1 tat protein. The syndecan-1 protein functions as an integral membrane protein and participates in cell proliferation, cell migration and cell-matrix interactions via its receptor for extracellular matrix proteins. Altered syndecan-1 expression has been detected in several different tumor types. While several transcript variants may exist for this gene, the full-length natures of only two have been described to date. These two represent the major variants of this gene and encode the same protein. [provided by RefSeq, Jul 2008]

Images



Flow Cytometry: Raji cells were fixed with 4% paraformaldehyde for 10 min. The cells were then stained with anti-CD138 / Syndecan 1 antibody [SQab1741] (red) at 1:100 dilution in 1x PBS/1% BSA for 30 min at room temperature, followed by Alexa Fluor® 488 labelled secondary antibody.



Immunohistochemistry: Formalin-fixed and paraffin-embedded Human Liver tissue stained with anti-CD138 / Syndecan 1 antibody [SQab1741] at 1:200. Antigen Retrieval: Boil tissue section in Tris/EDTA buffer (pH 9.0).

References

- 1. -
- 2. -
- 3. -
- 4. -
- 5. -

FOR RESEARCH USE ONLY. NOT FOR USE IN DIAGNOSTIC PROCEDURES